

Heaven and Earth Designs

Sea Sister

Chart No: HAESF210

By Michele Sayetta

Artwork by Selina Fenech



Finished Design Size 250W by 574H (10WX 227/8 H inches on 25ct fabric)

Heaven and Earth Designs

425 9th Street SW

Willmar MN 56201

320-214-7998

www.heavenandearthdesigns.com

Copyright Heaven and Earth Designs

Copyright Selina Fenech

Sea Sister
By Michele Sayetta
Artwork by Selina Fenech

Materials List

1	DMC	50 skeins	Refer to inside sheet
---	-----	-----------	-----------------------

This chart pack, or any part of this design or chart may not be reproduced in whole or in part in any form without the written permission from Michele Sayetta.

©Copyright Heaven and Earth Designs.

©Copyright Selina Fenech

Instructions

The model for Sea Sister is stitched over 1 on 25ct, Linen or Evenweave may be used. You may use 1 or 2 strands of floss depending on your preference.

It is recommended that you make working copies and enlarge to view detail and symbols.

We also suggest using a #28 needle when working over 1 on 25ct.

This is a large project that will offer many hours of stitching pleasure.

We thank you for purchasing this design and welcome any questions or comments that you may have.


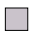
















Heaven and Earth Designs
507-280-8249

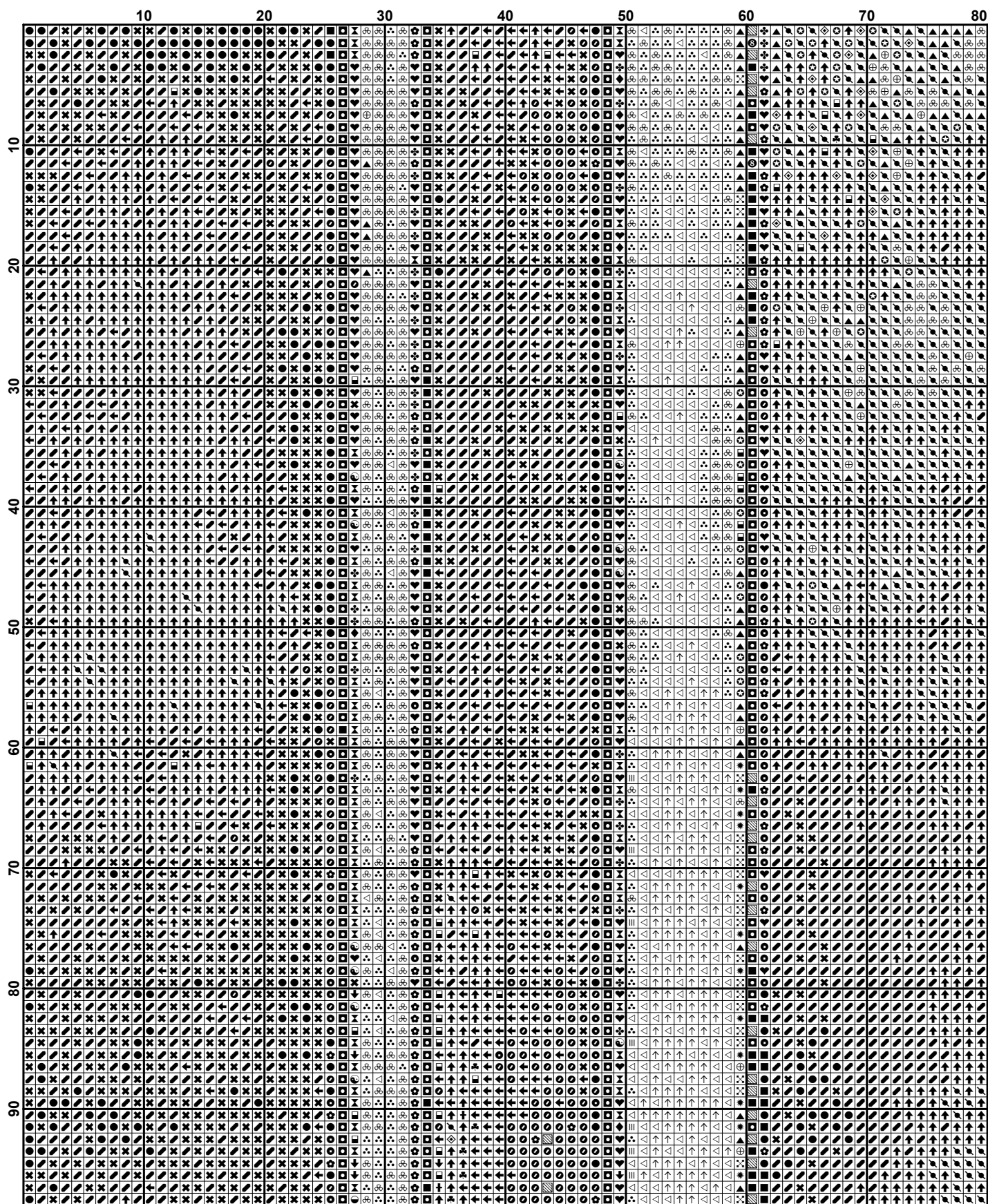
<http://www.heavenandearthdesigns.com>

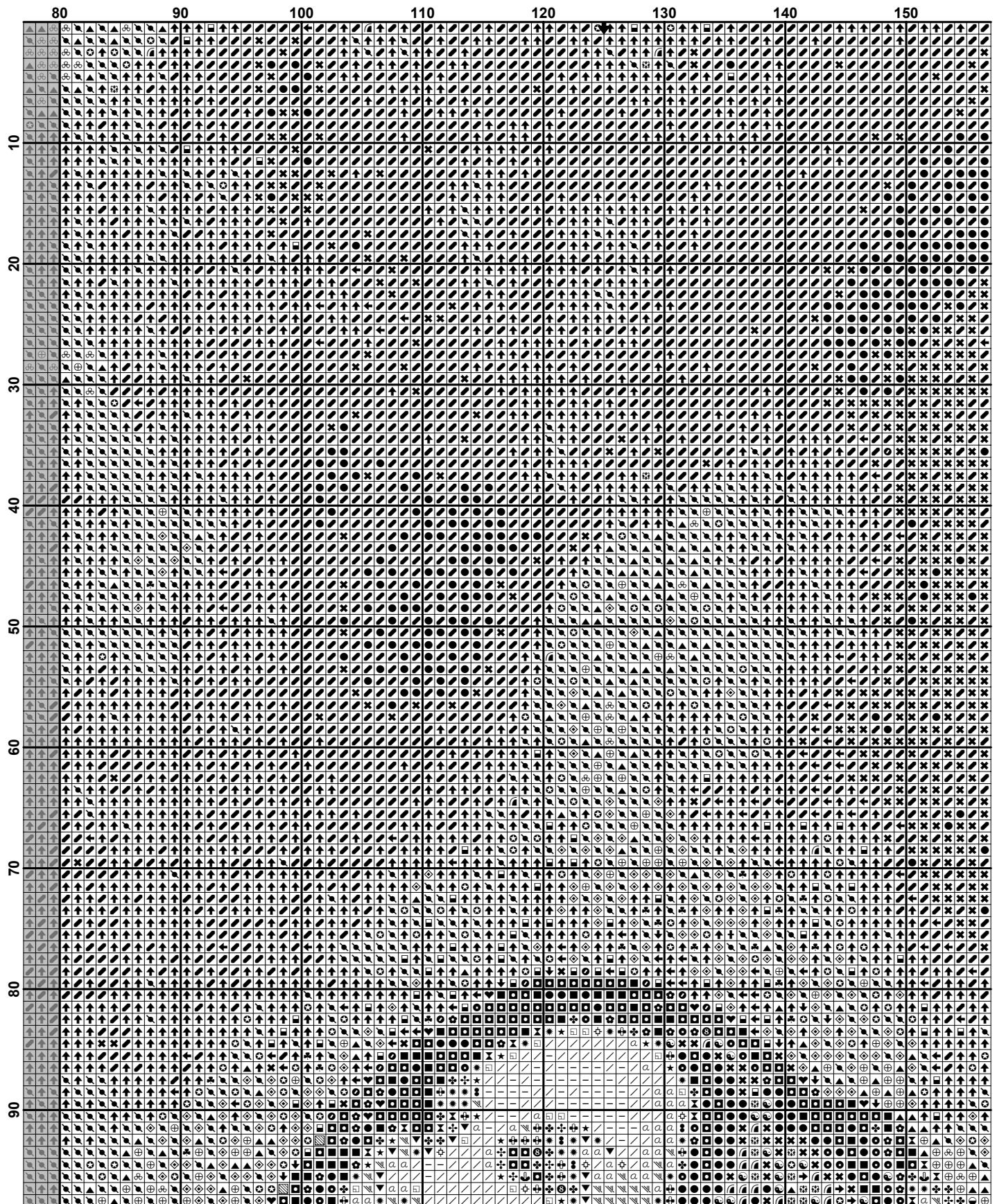
Pattern Name: Sea Sisters - Fenech
Designed By: Michele Sayetta
Company: Heaven and Earth Designs
Copyright: 2005
Fabric: Linen or Evenweave 25, White
 250w X 574h Stitches
Size: 25 Count, 10w X 22-7/8h in

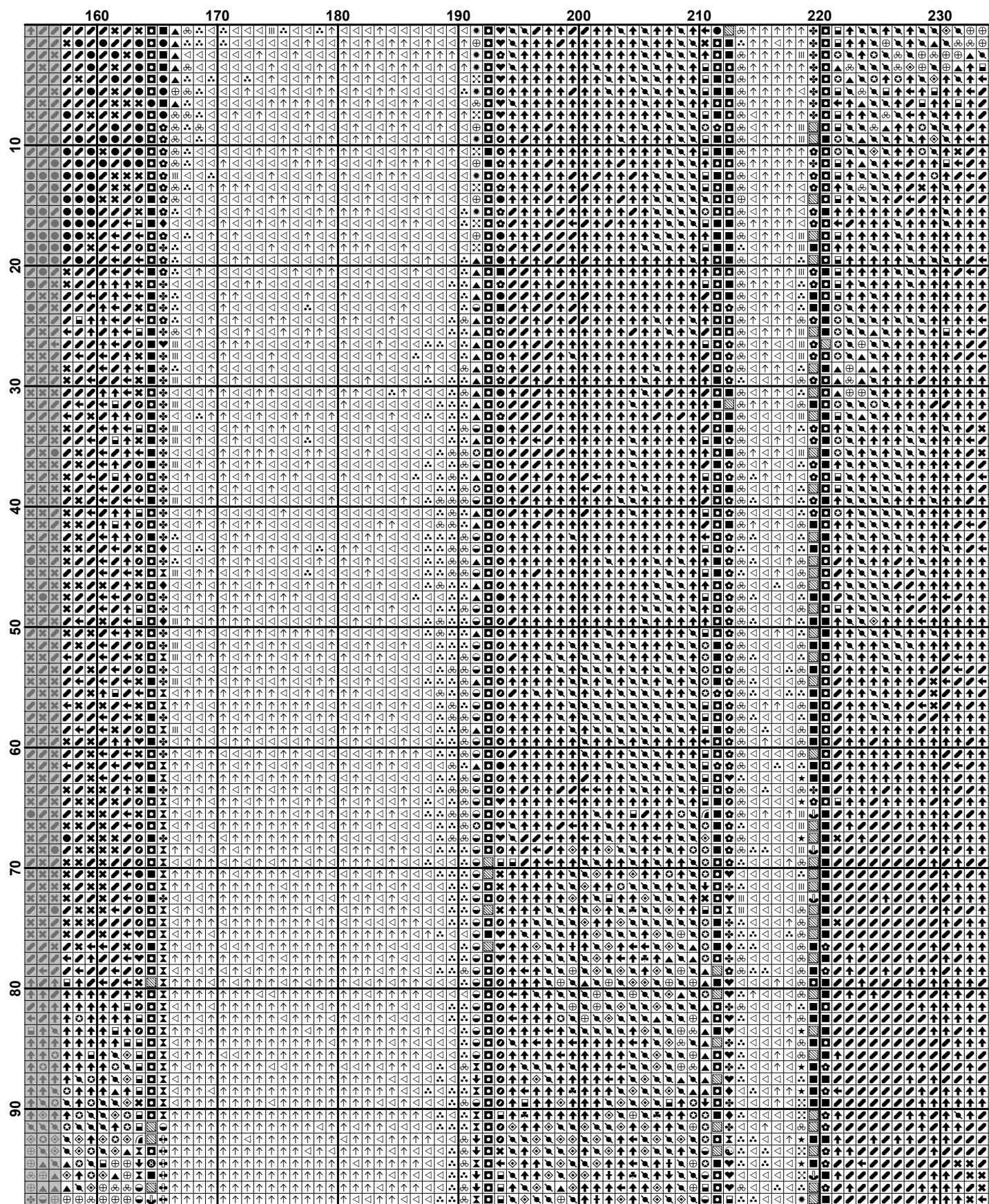
Floss Used for Full Stitches:

Symbol	Strands	Type	Number	Color
	—	2	DMC 032	Kreinik #4
	⑧	2	DMC 154	Grape-VYDK
	★	2	DMC 168	Pewter-VYLT
	✱	2	DMC 318	Steel Gray-LT
	♣	2	DMC 413	Pewter Gray-DK
	✚	2	DMC 414	Steel Gray-DK
	▨	2	DMC 500	Blue Green-VYDK
	▲	2	DMC 518	Wedgewood-LT
	◆	2	DMC 561	Jade-VYDK
	↑	2	DMC 747	Sky Blue-VYLT
	α	2	DMC 754	Peach-LT
	≡	2	DMC 758	Terra Cotta-VYLT
	➔	2	DMC 792	Cornflower Blue-DK
	✕	2	DMC 794	Cornflower Blue-LT
	✱	2	DMC 798	Delft Blue-DK
	●	2	DMC 803	Baby Blue-LVYDK
	⊕	2	DMC 806	Peacock Blue-DK
	●	2	DMC 820	Royal Blue-VYDK
	■	2	DMC 823	Navy Blue-DK
	☯	2	DMC 824	Blue-VYDK
	☯	2	DMC 825	Blue-DK
	●	2	DMC 931	Antique Blue-MD
	■	2	DMC 939	Navy Blue-VYDK
	♣	2	DMC 943	Bright Green-MD
	◇	2	DMC 958	Sea Green-DK
	⊕	2	DMC 959	Sea Green-MD
	∴	2	DMC 964	Sea Green-LT
	☯	2	DMC 995	Electric Blue-DK
	☯	2	DMC 996	Electric Blue-MD
	☯	2	DMC 3031	Mocha Brown-VYDK
	▼	2	DMC 3064	Desert Sand
	☯	2	DMC 3072	Beaver Gray-VYLT

Symbol	Strands	Type	Number	Color
	✱	2	DMC 3328	Salmon-DK
	✧	2	DMC 3743	Antique Violet-VY LT
	✿	2	DMC 3750	Antique Blue-VY DK
	◁	2	DMC 3761	Sky Blue-LT
	◼	2	DMC 3765	Peacock Blue-VY DK
	⌘	2	DMC 3766	Peacock Blue-LT
	⌘	2	DMC 3768	Gray Green-DK
	/	2	DMC 3770	Tawny-VY LT
	♥	2	DMC 3808	Turquoise-UL VY DK
		2	DMC 3811	Turquoise-VY LT
	←	2	DMC 3812	Sea Green-VY DK
	✕	2	DMC 3842	Wedgewood-DK
	↑	2	DMC 3844	Bright Turquoise-DK
	○	2	DMC 3847	Teal Green-DK
	↓	2	DMC 3848	Teal Green-MD
	†	2	DMC 3851	Bright Green
	✦	2	DMC 3860	Cocoa
	⋮	2	DMC 3863	Mocha Beige-MD



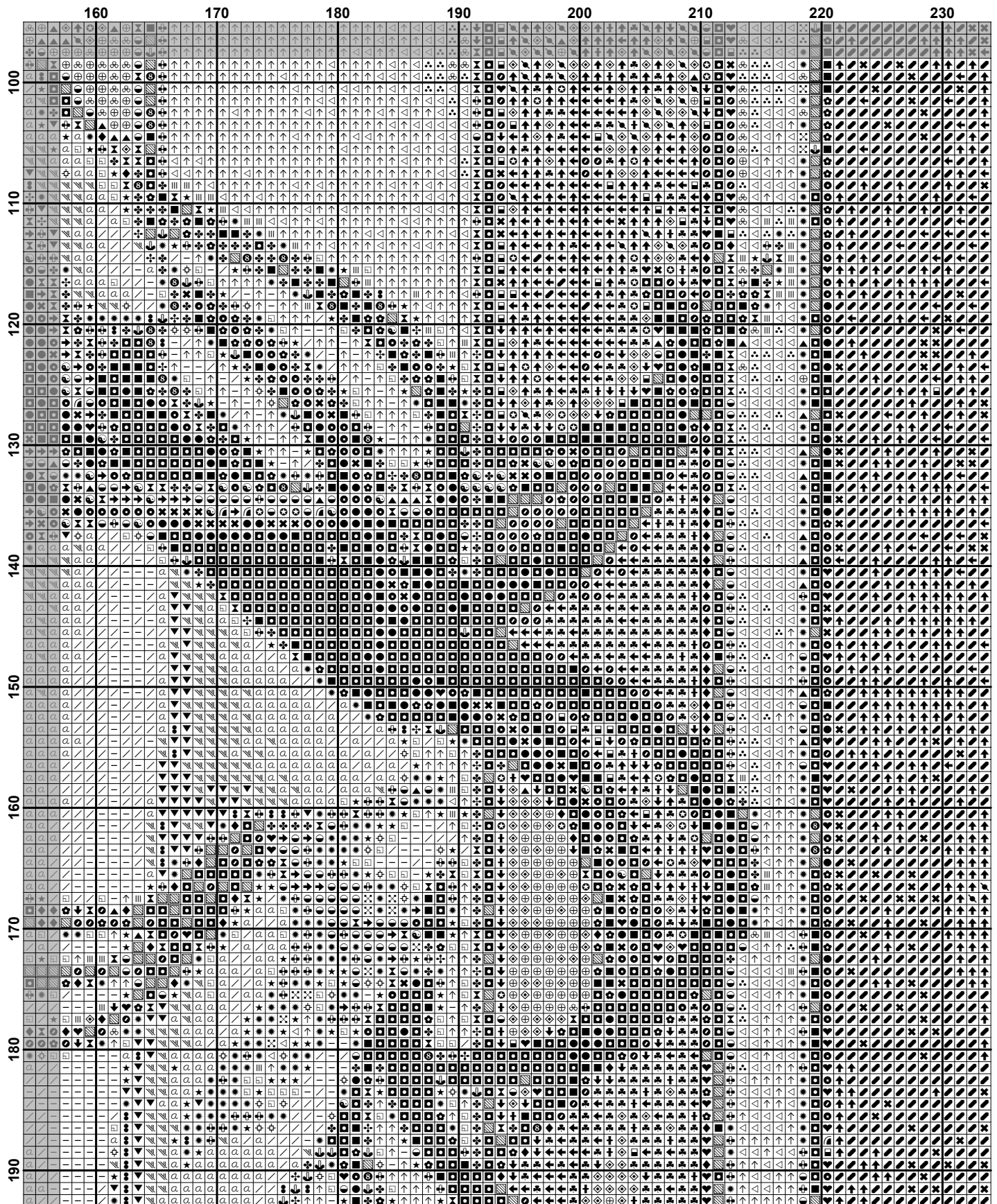


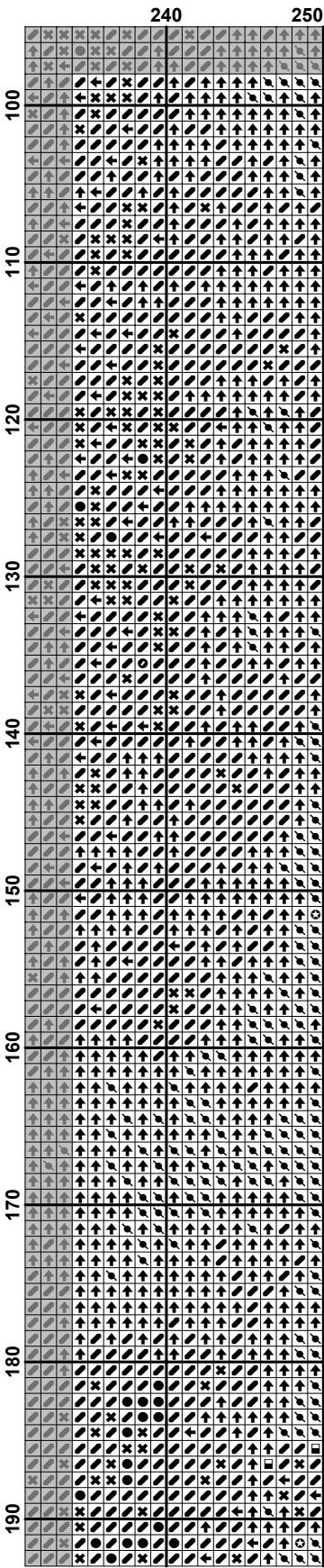


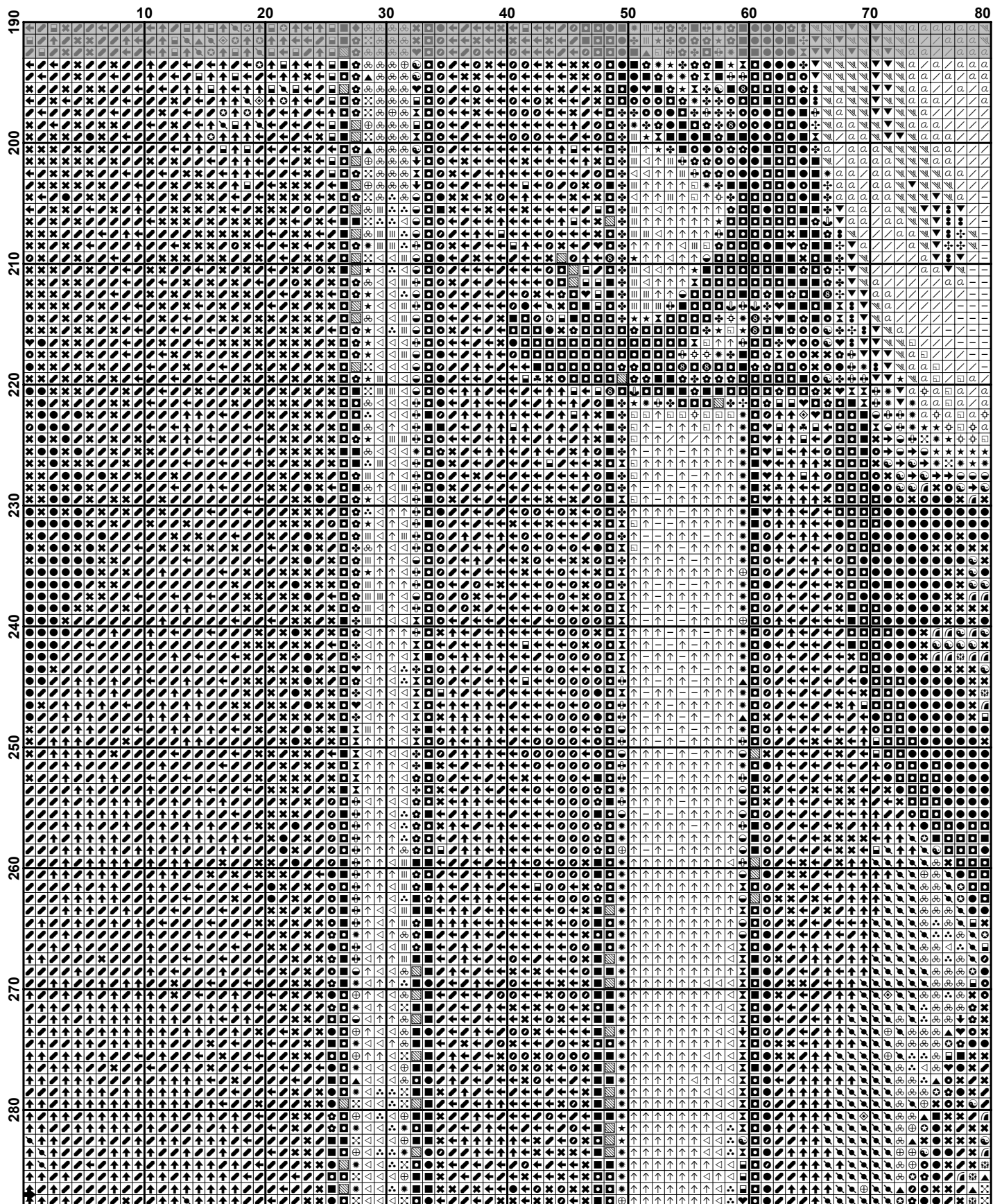
		240	250
	10		
	20		
	30		
	40		
	50		
	60		
	70		
	80		
	90		

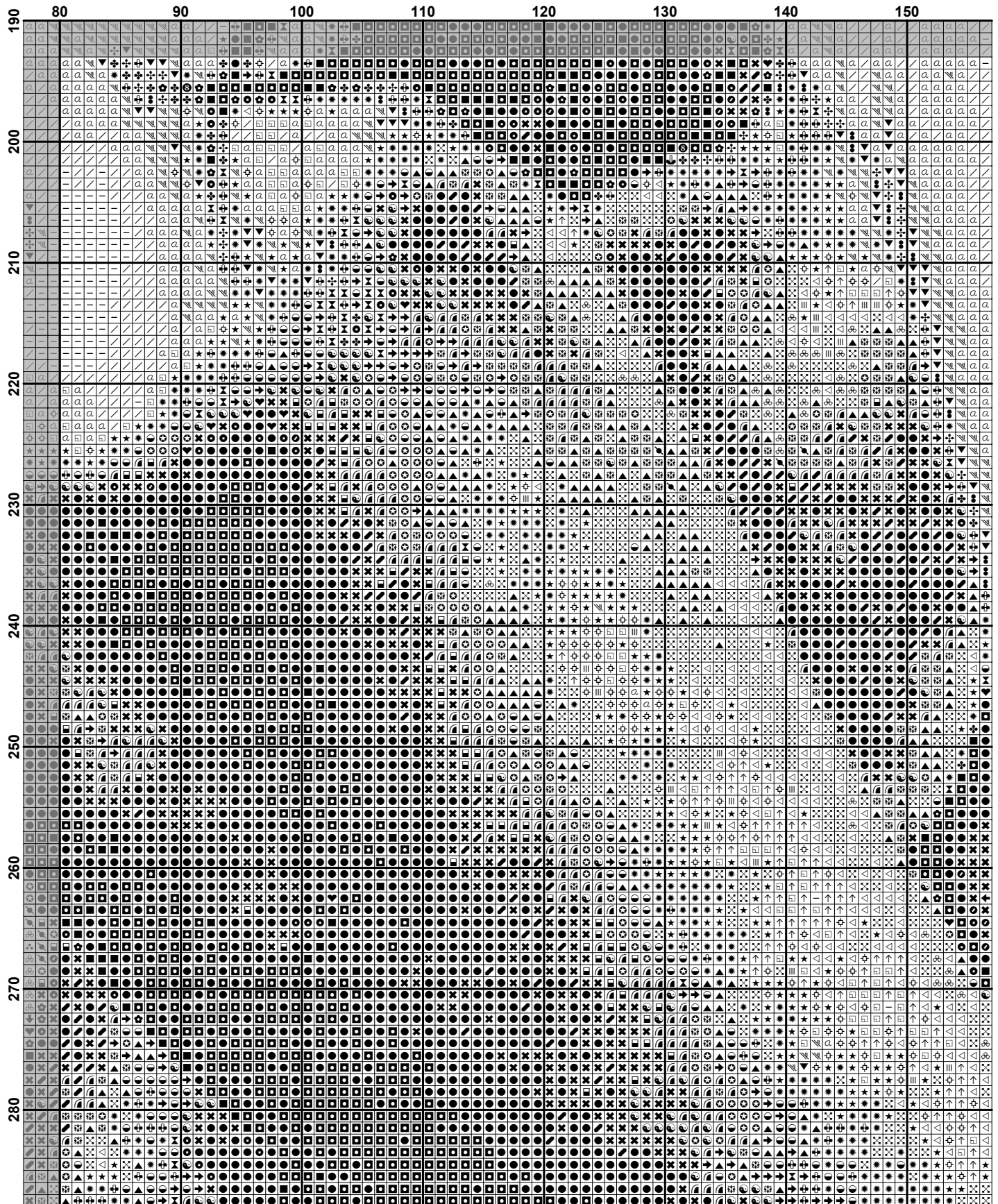


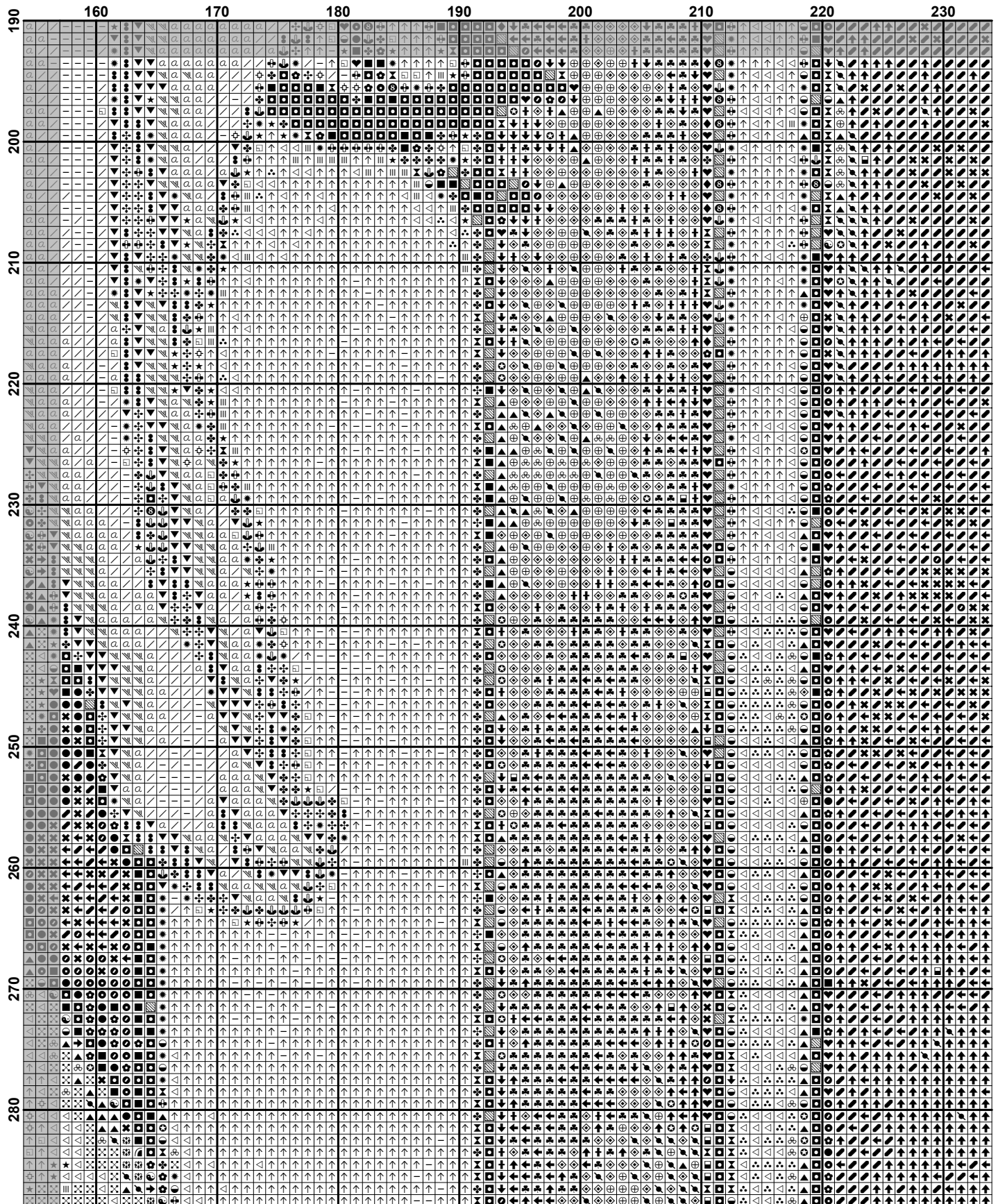


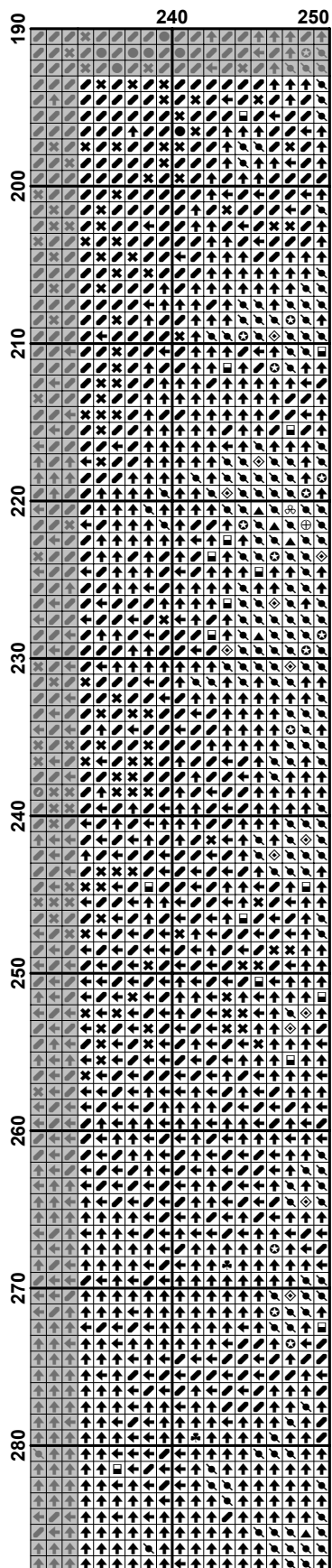


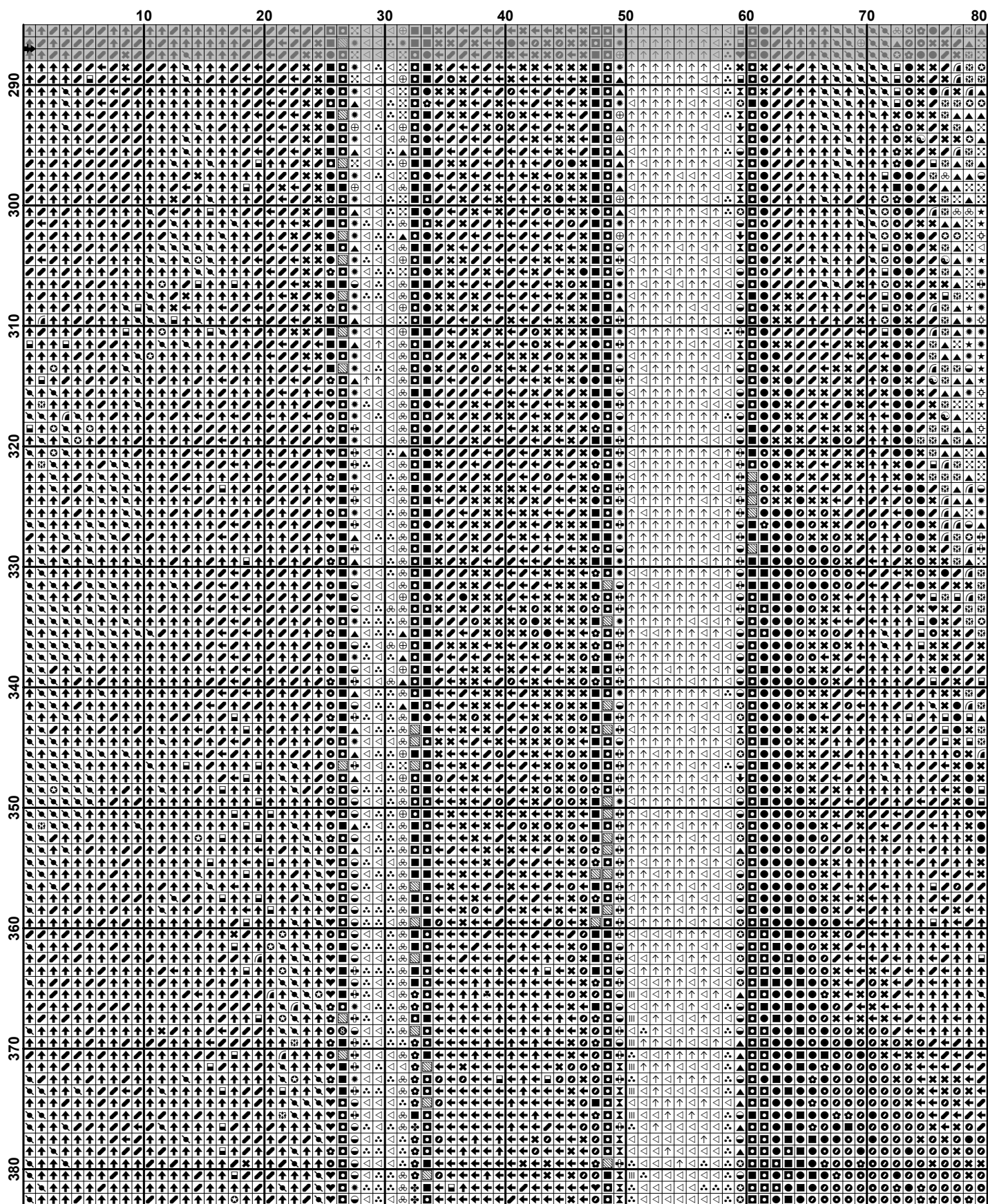


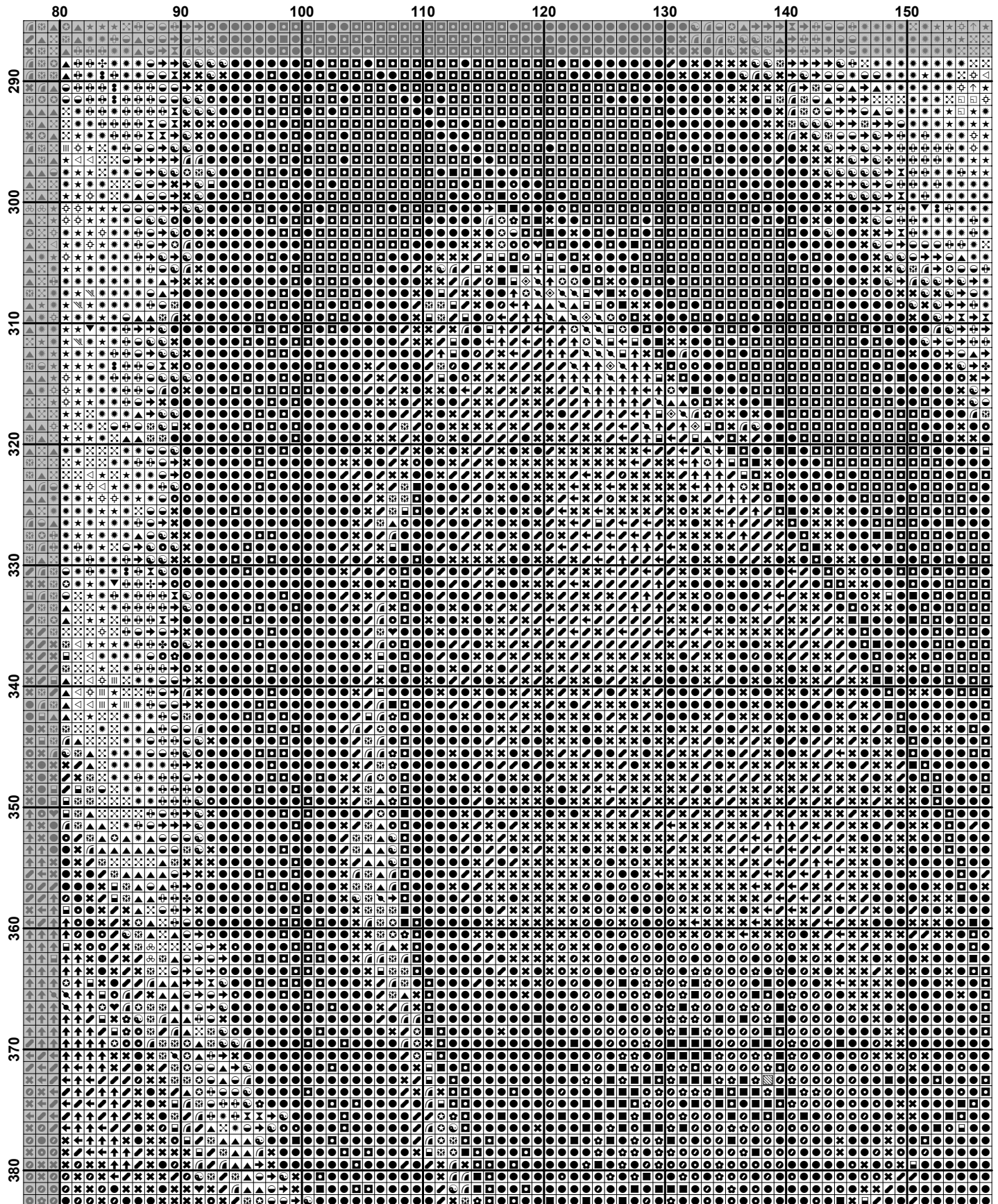


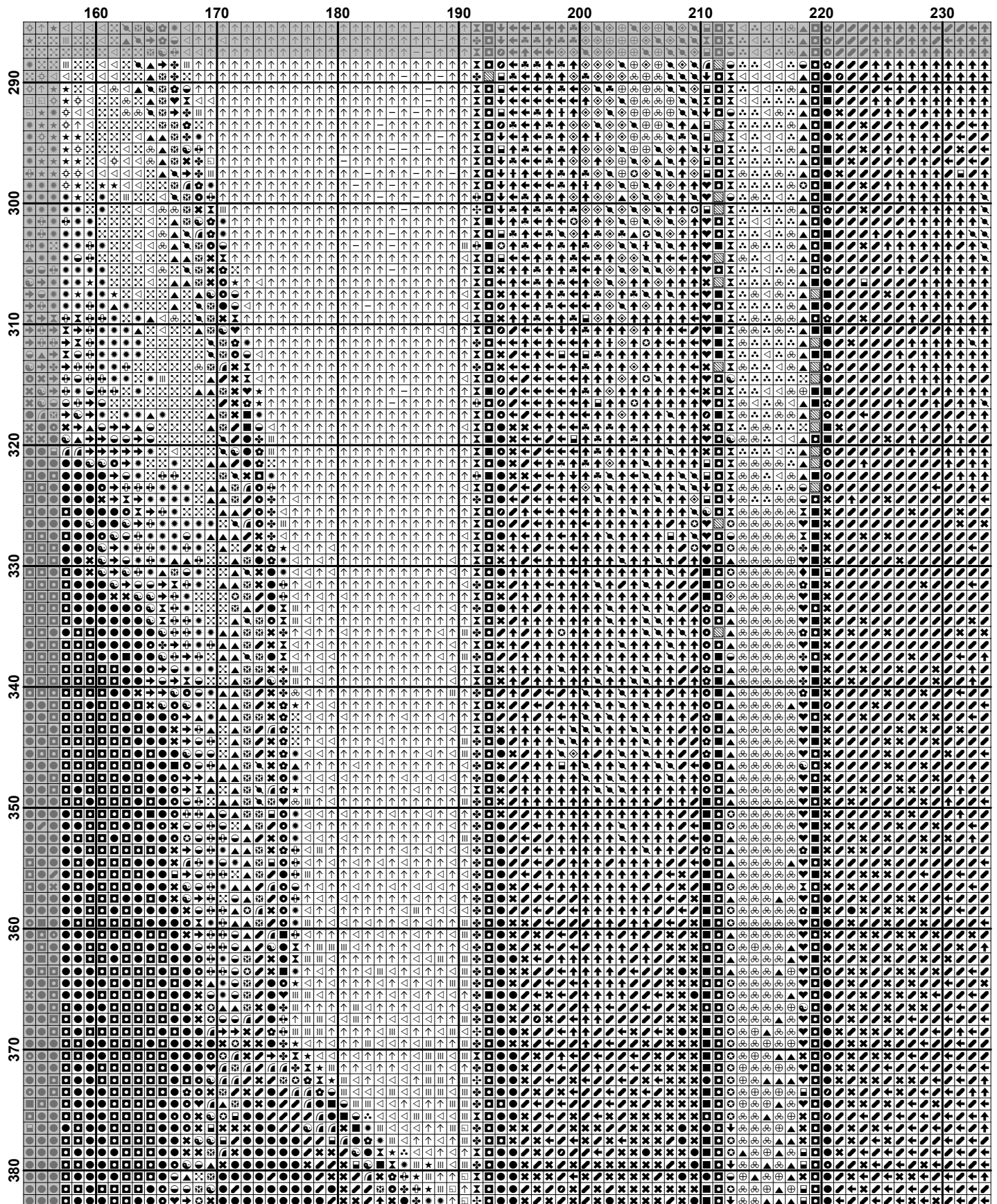


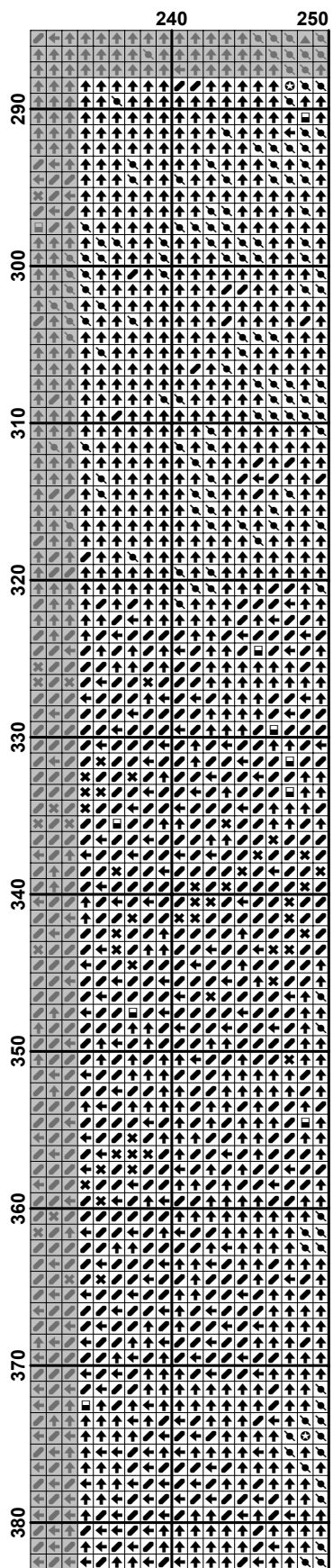


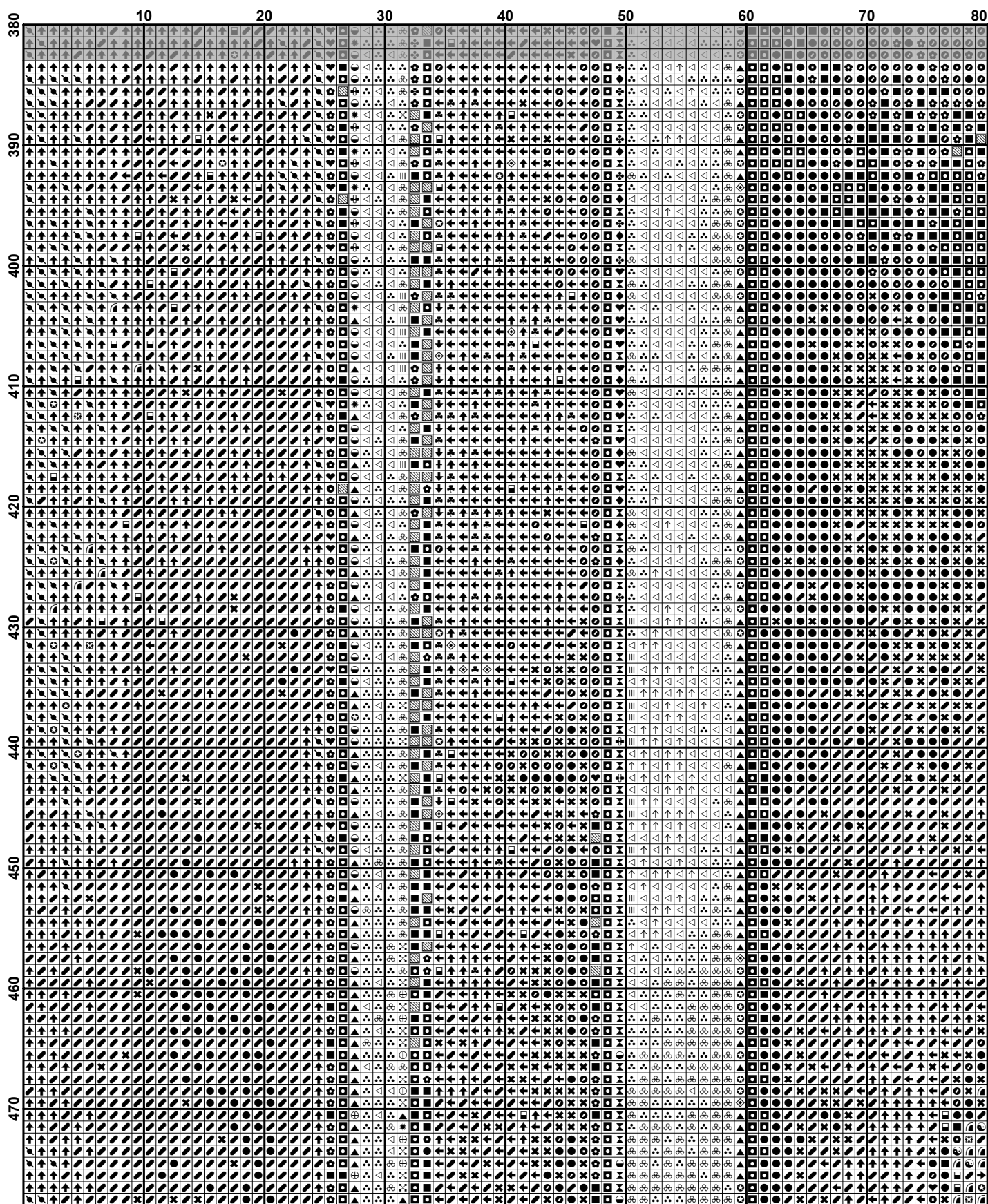




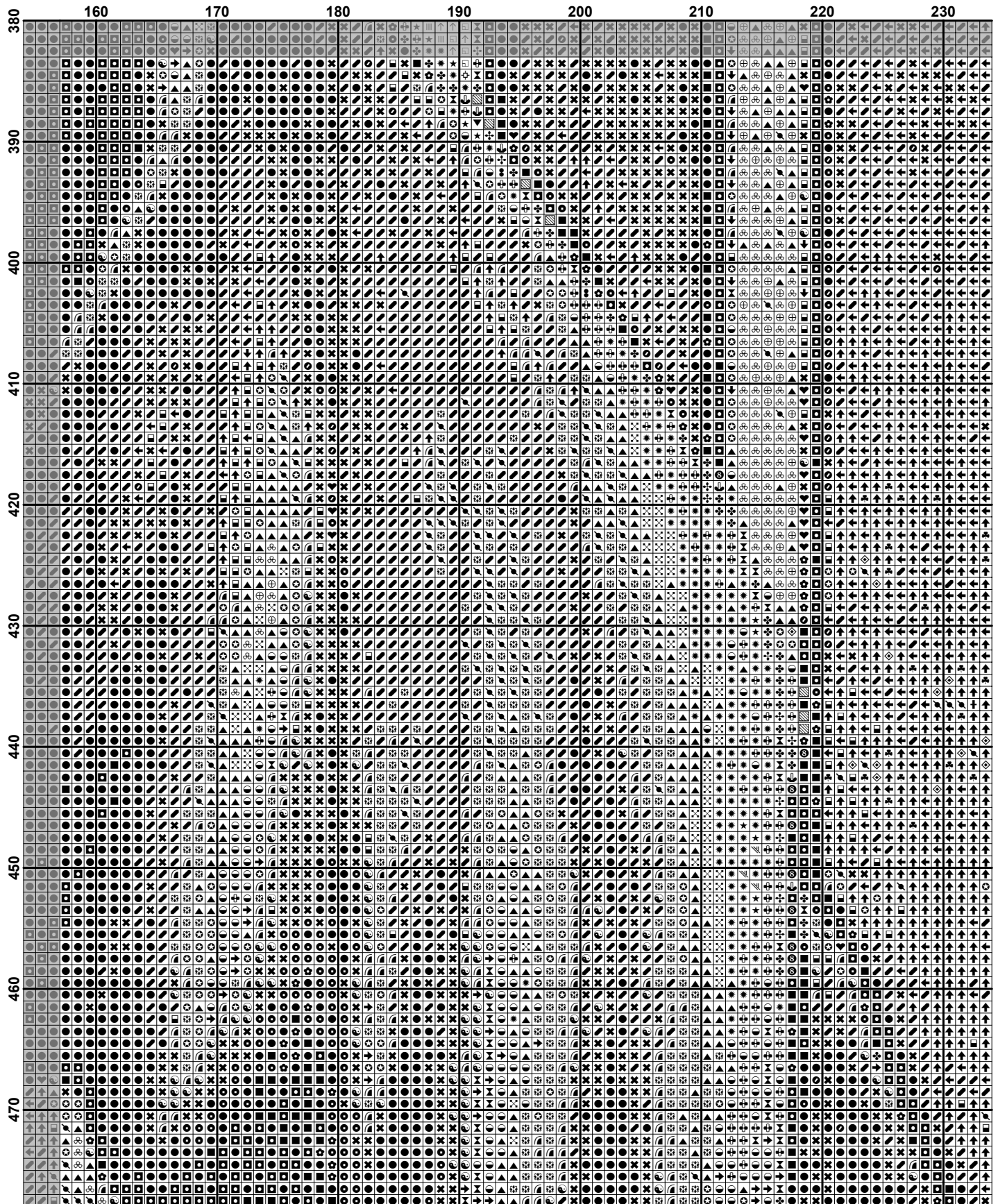


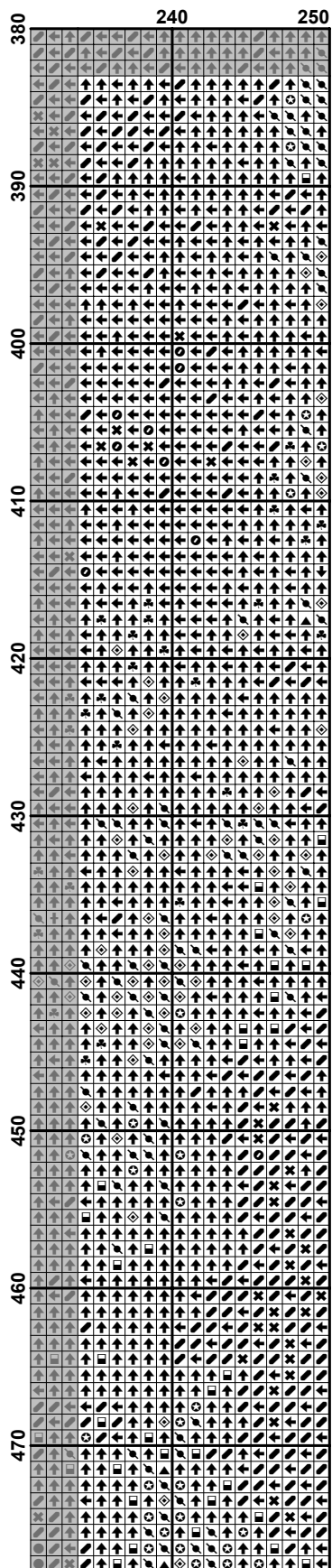


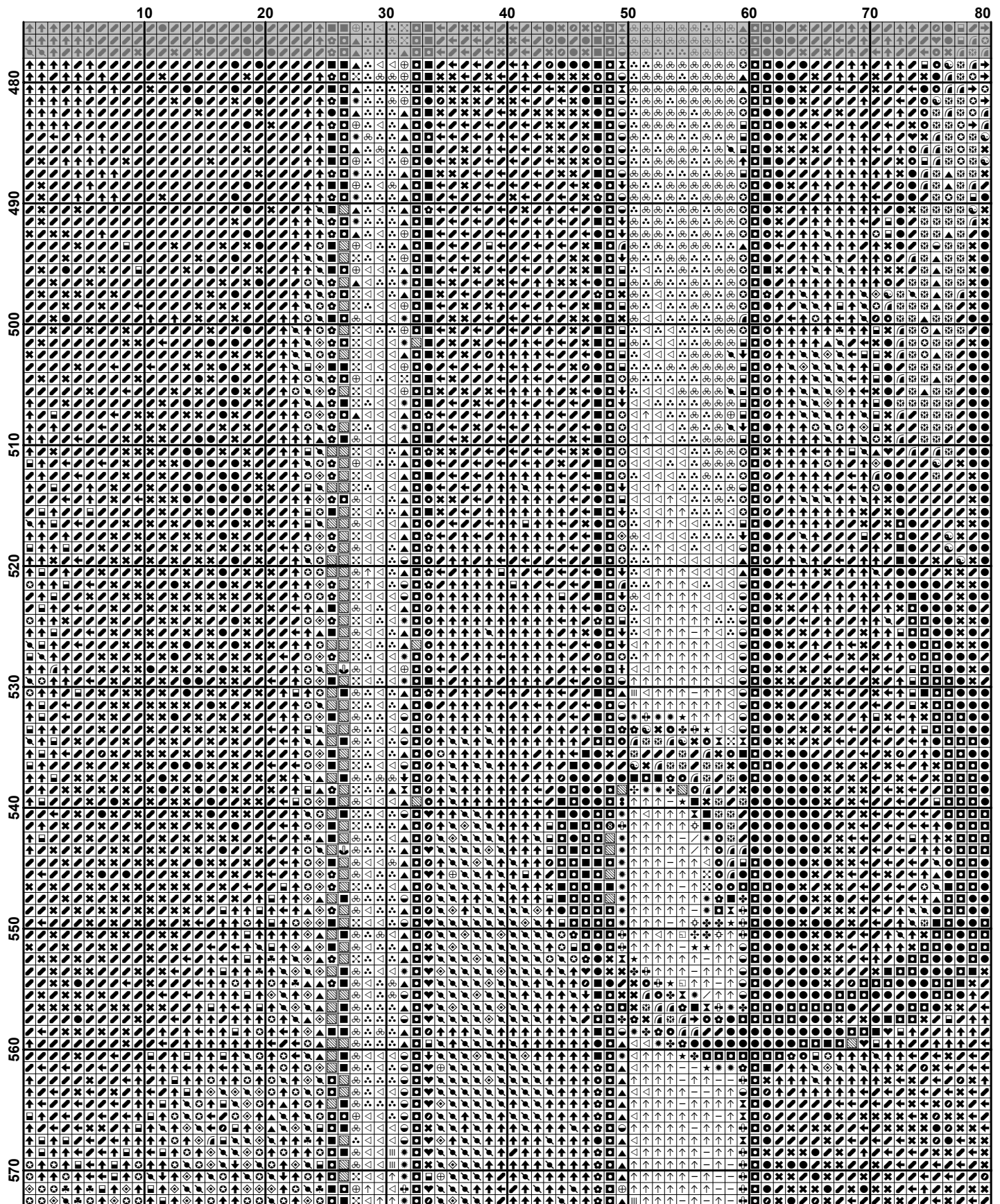


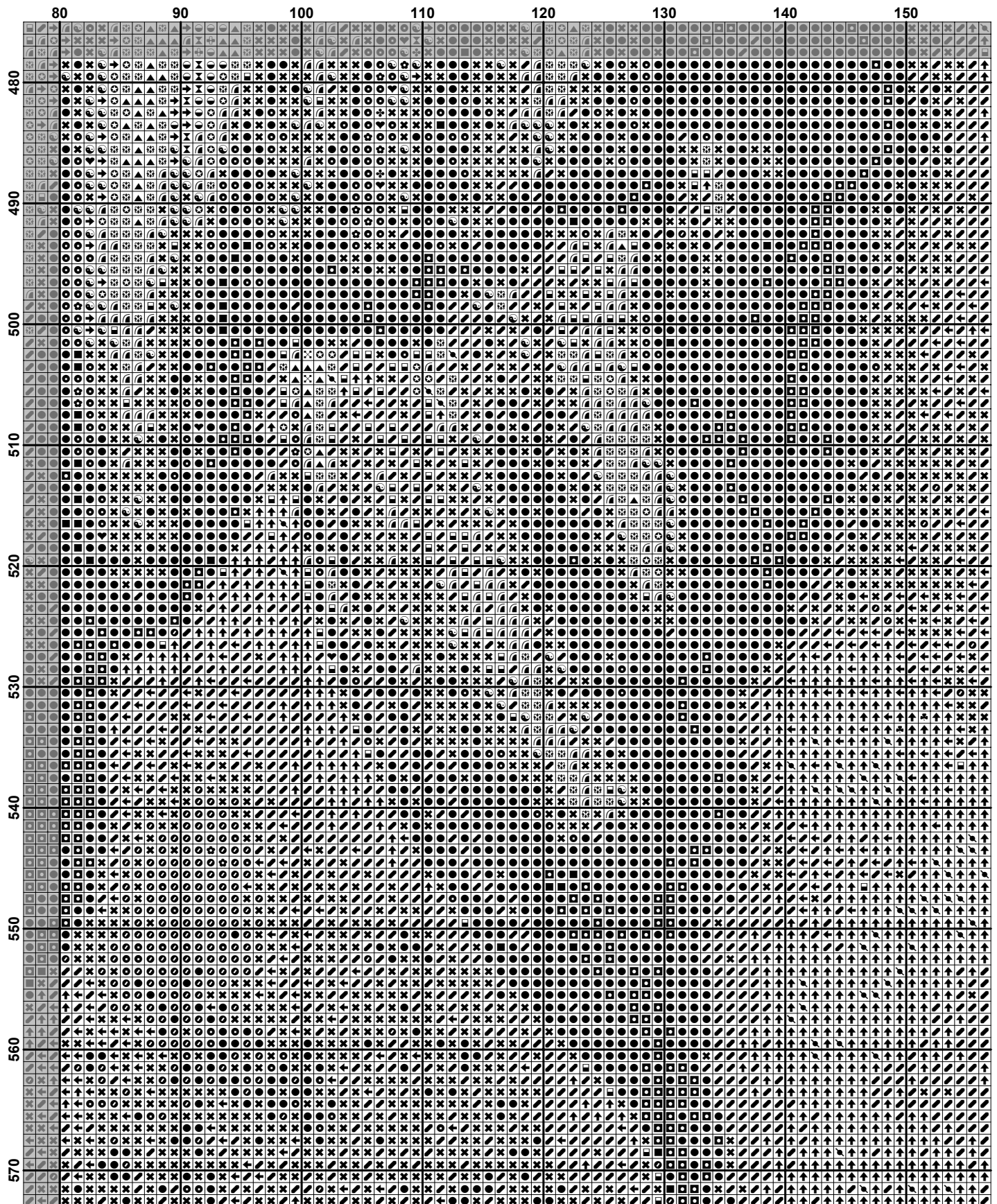


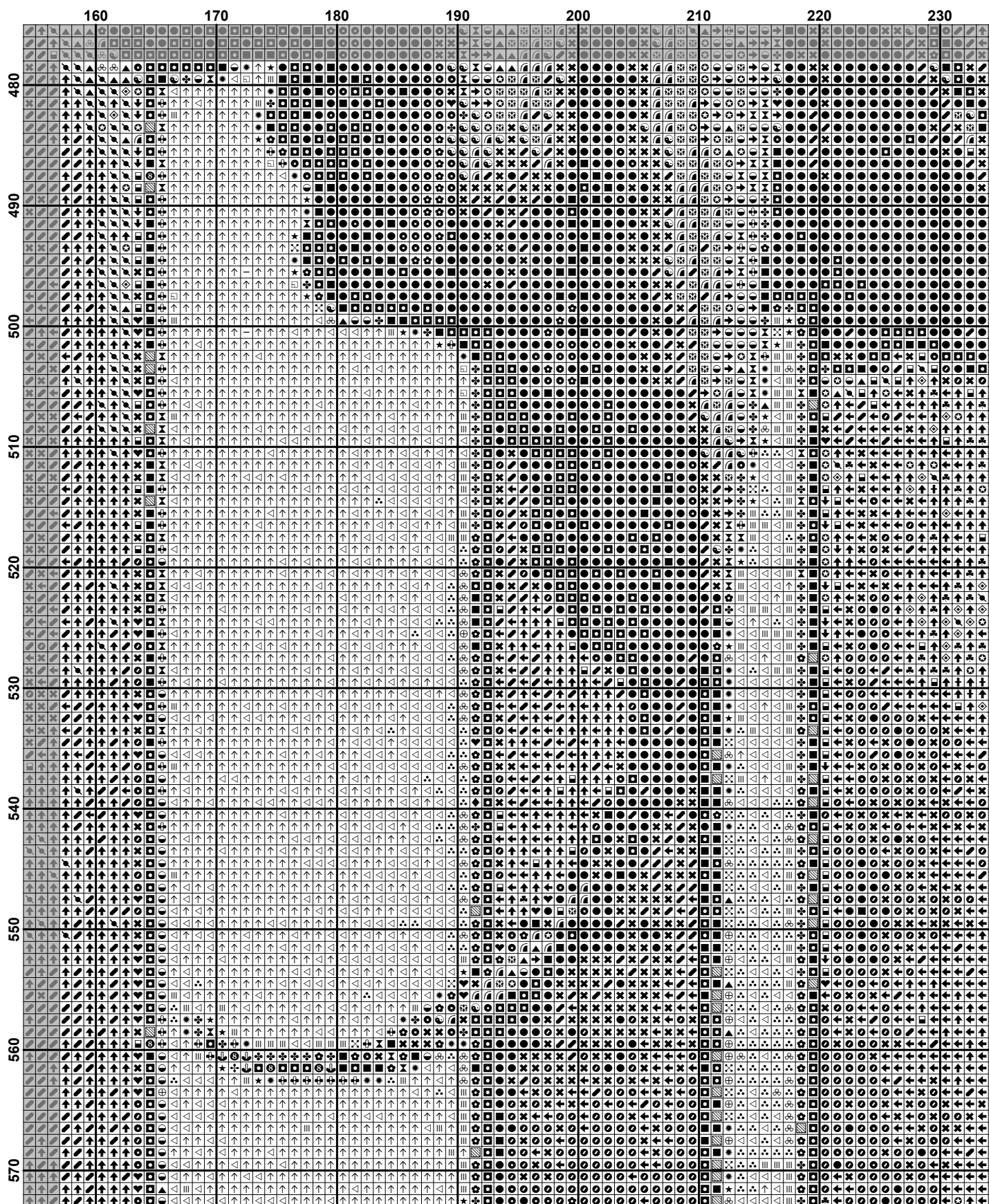


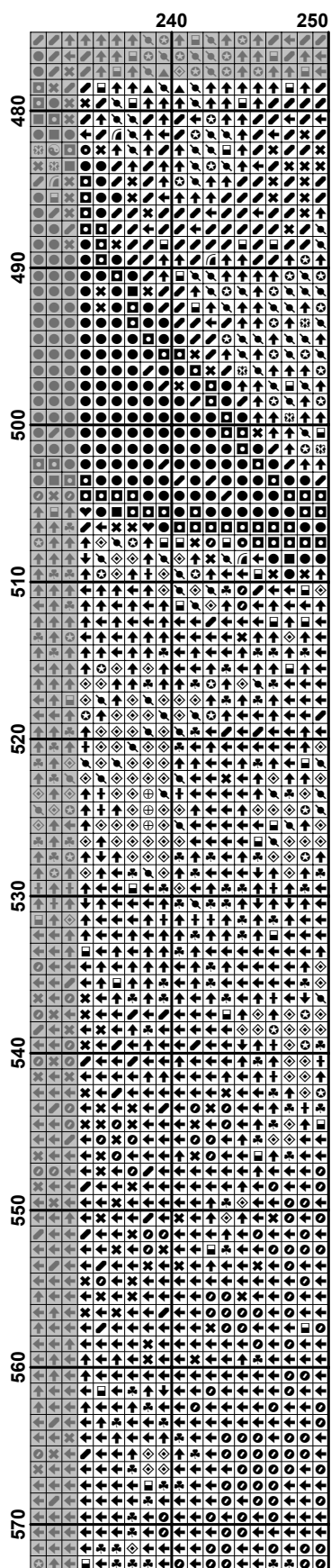


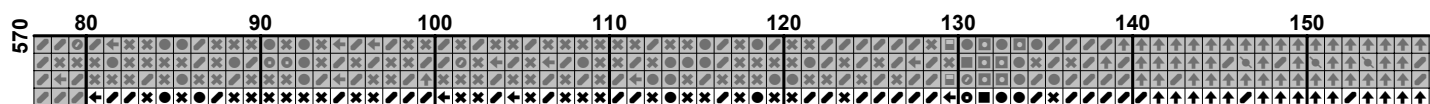


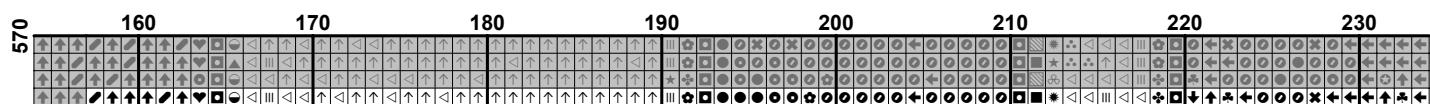












[illegible]