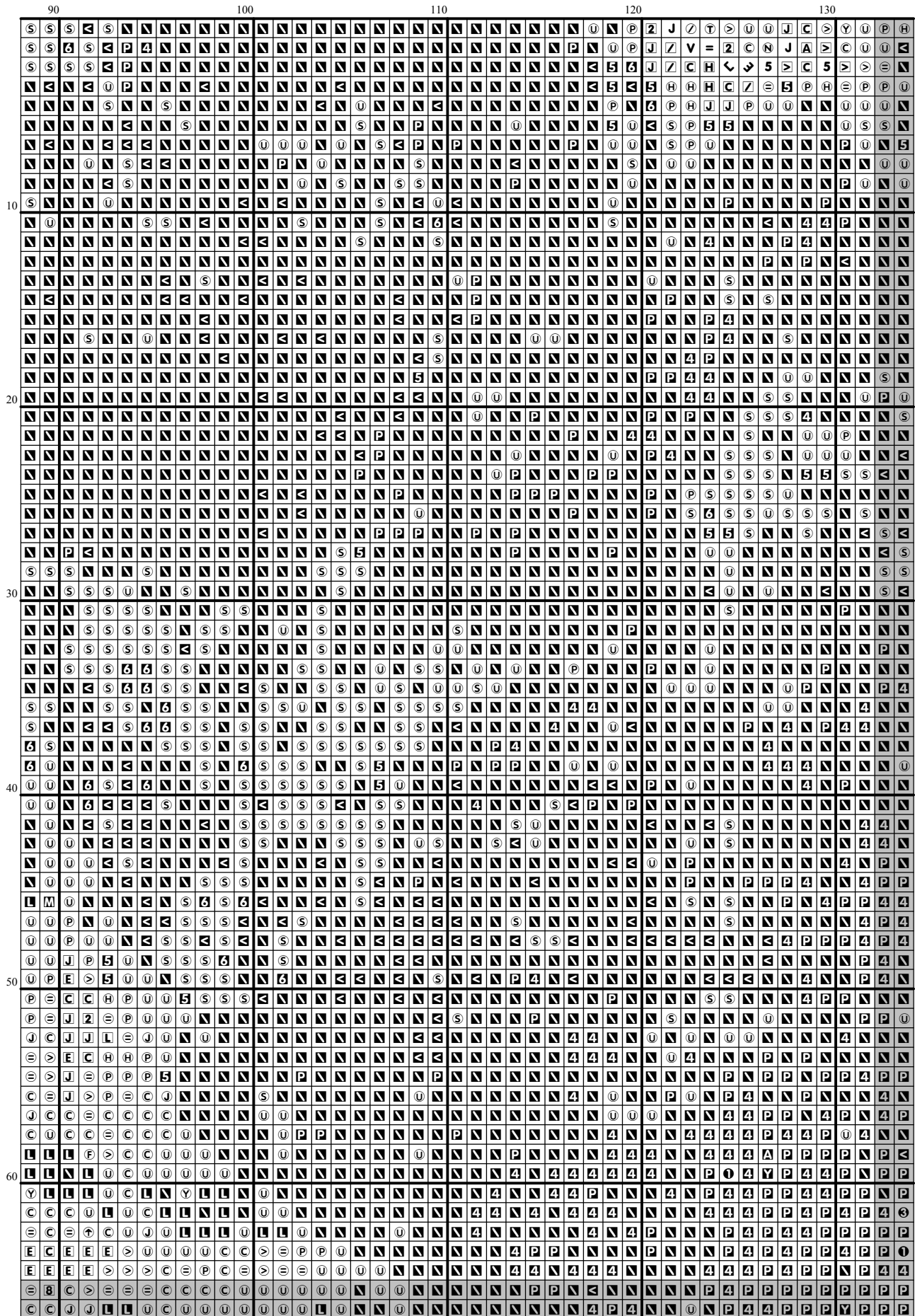
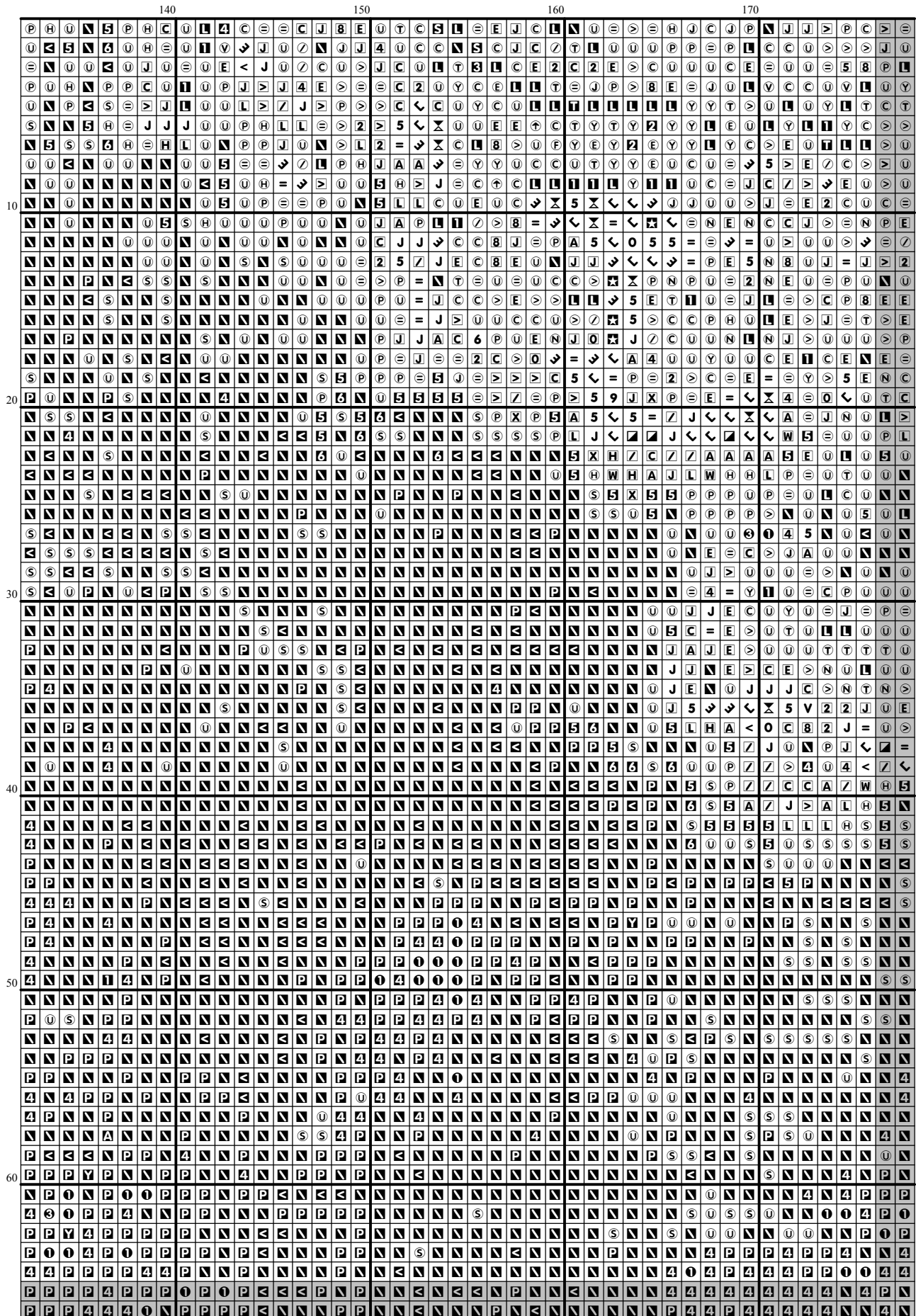
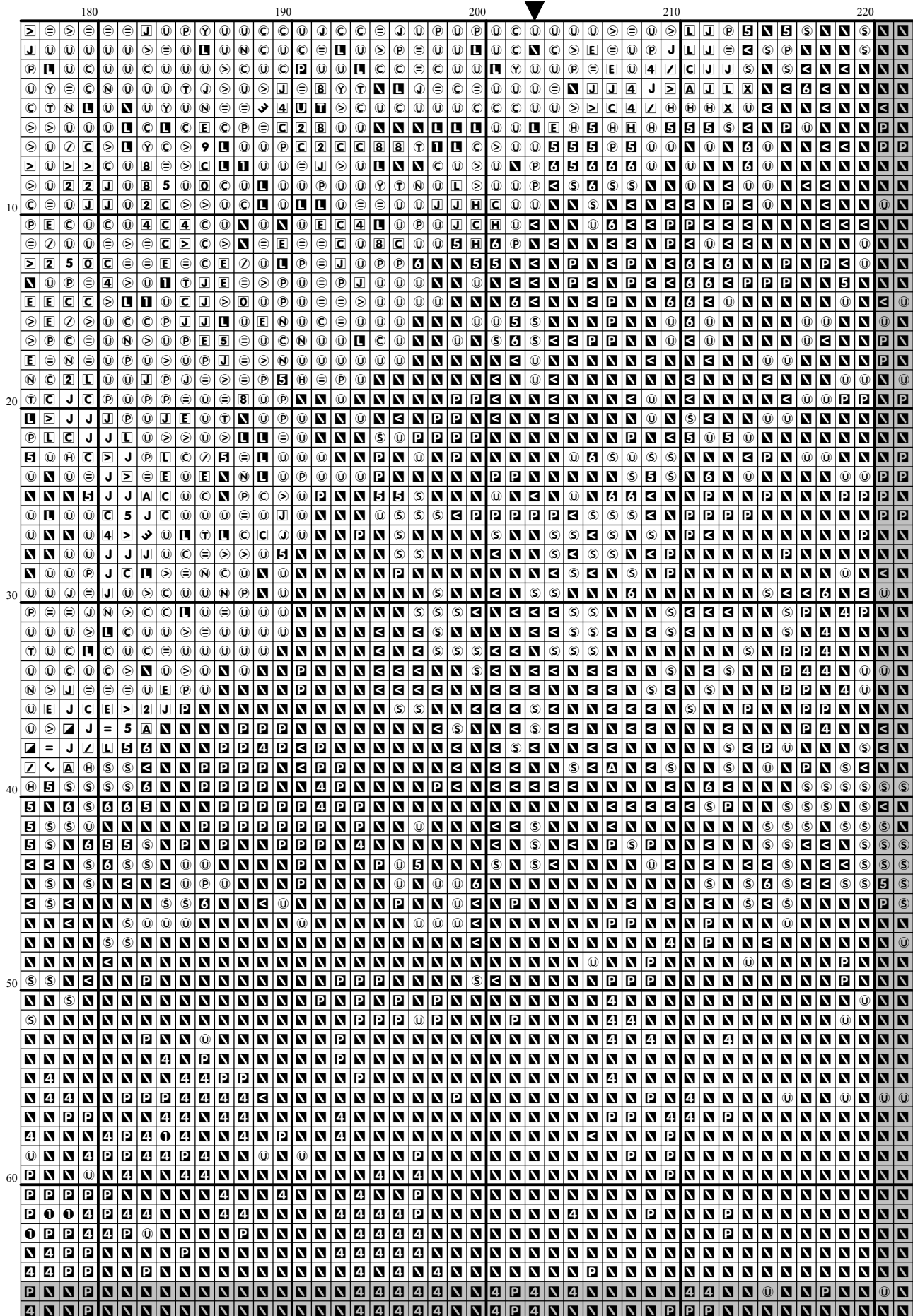


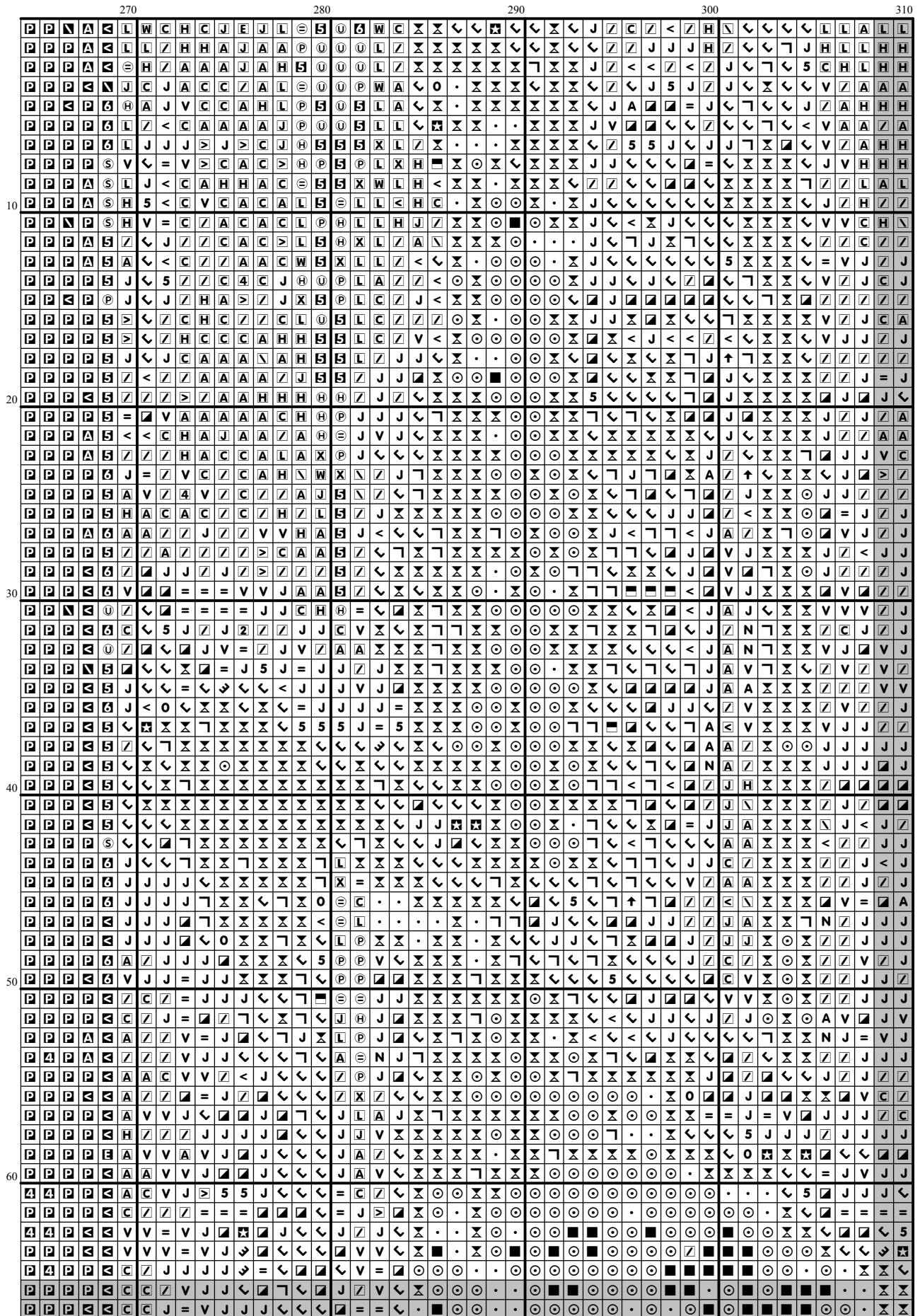
[illegible]

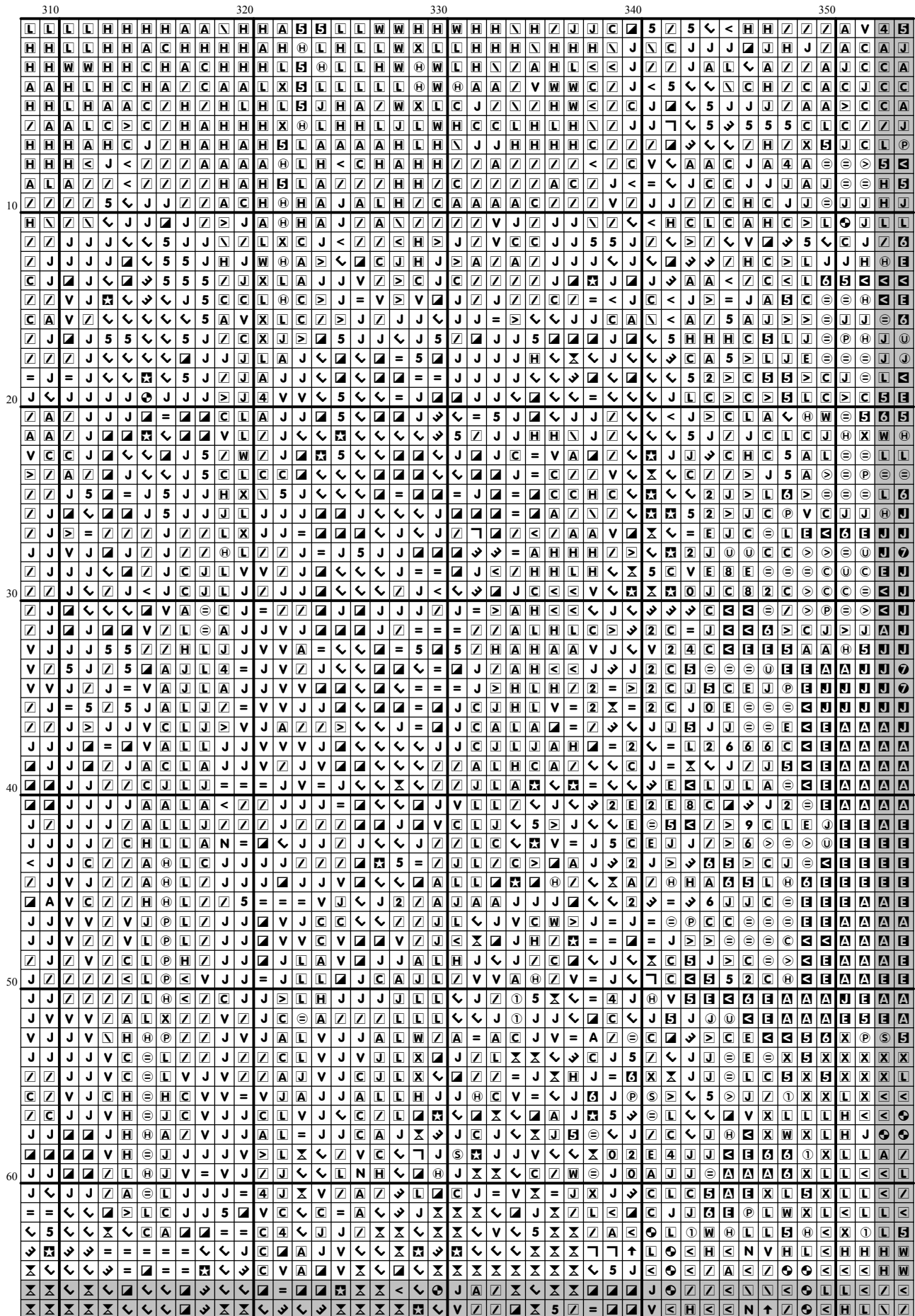


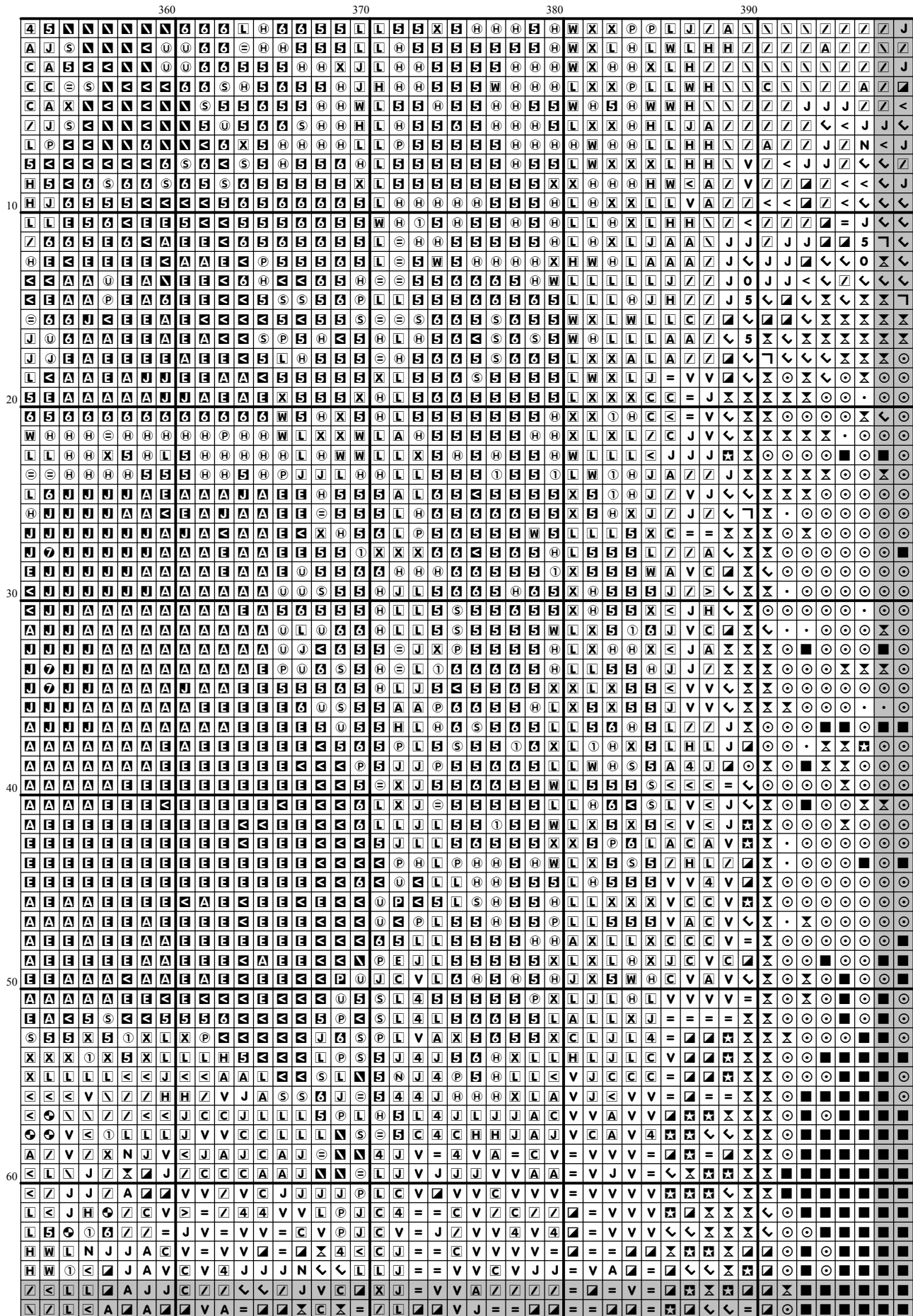


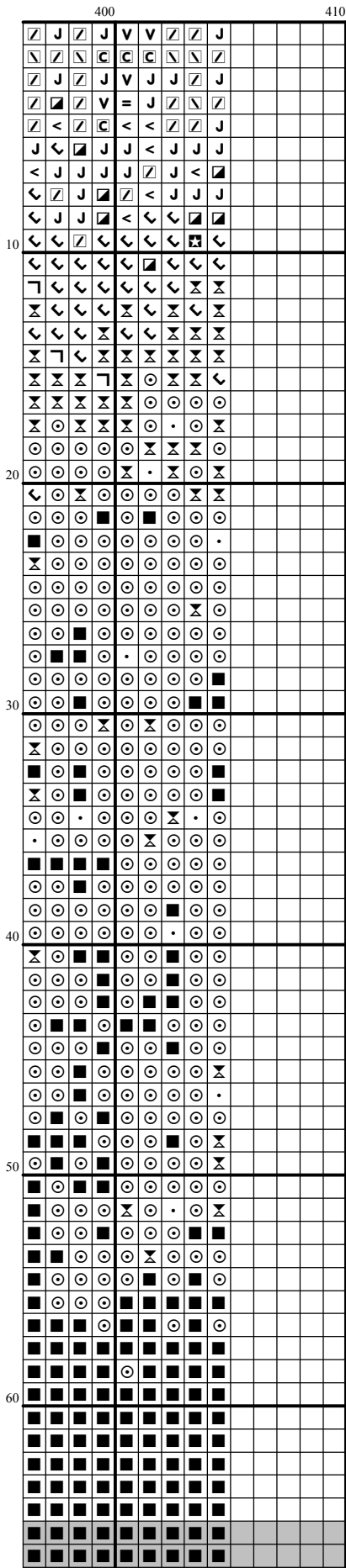


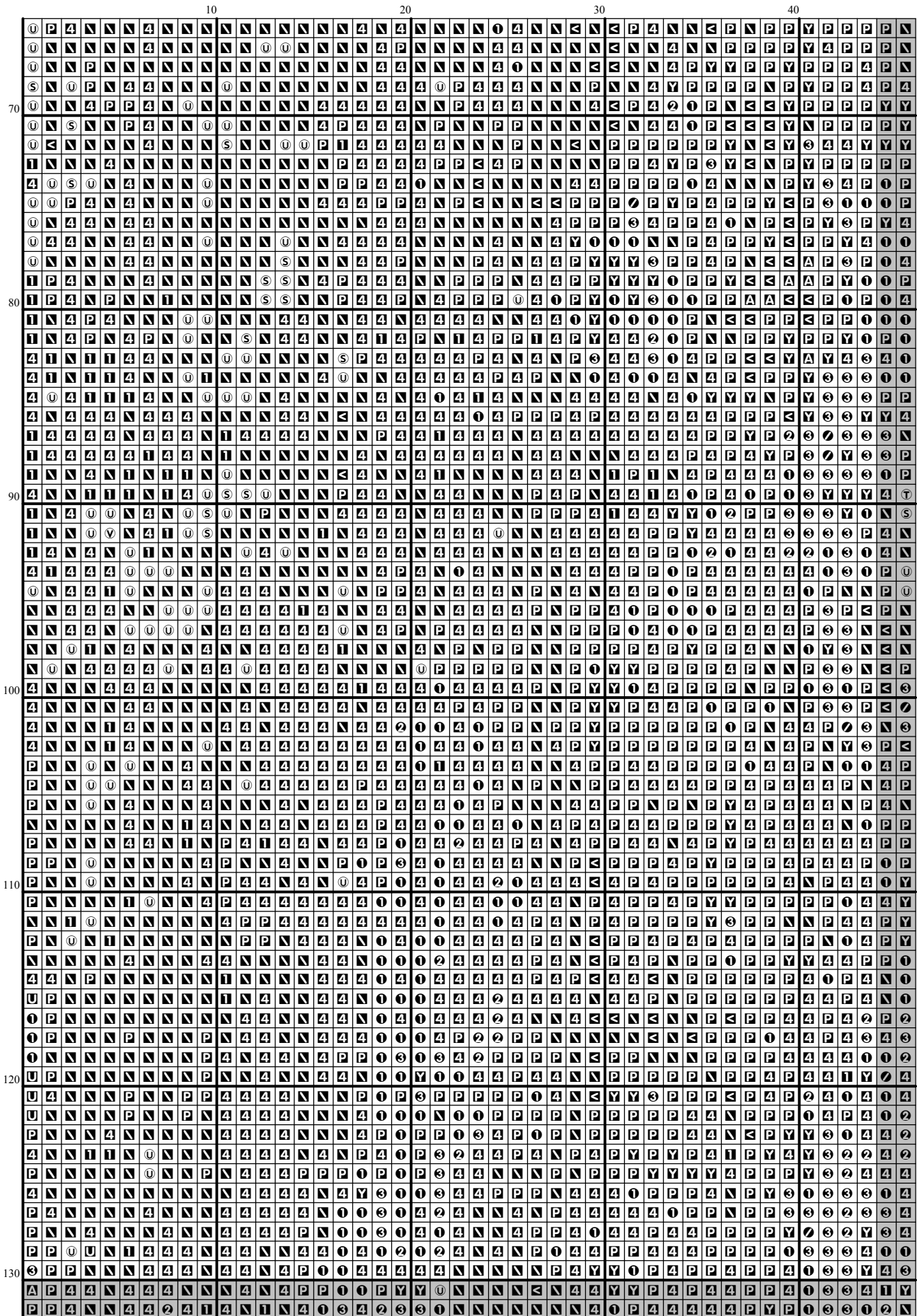
[illegible]

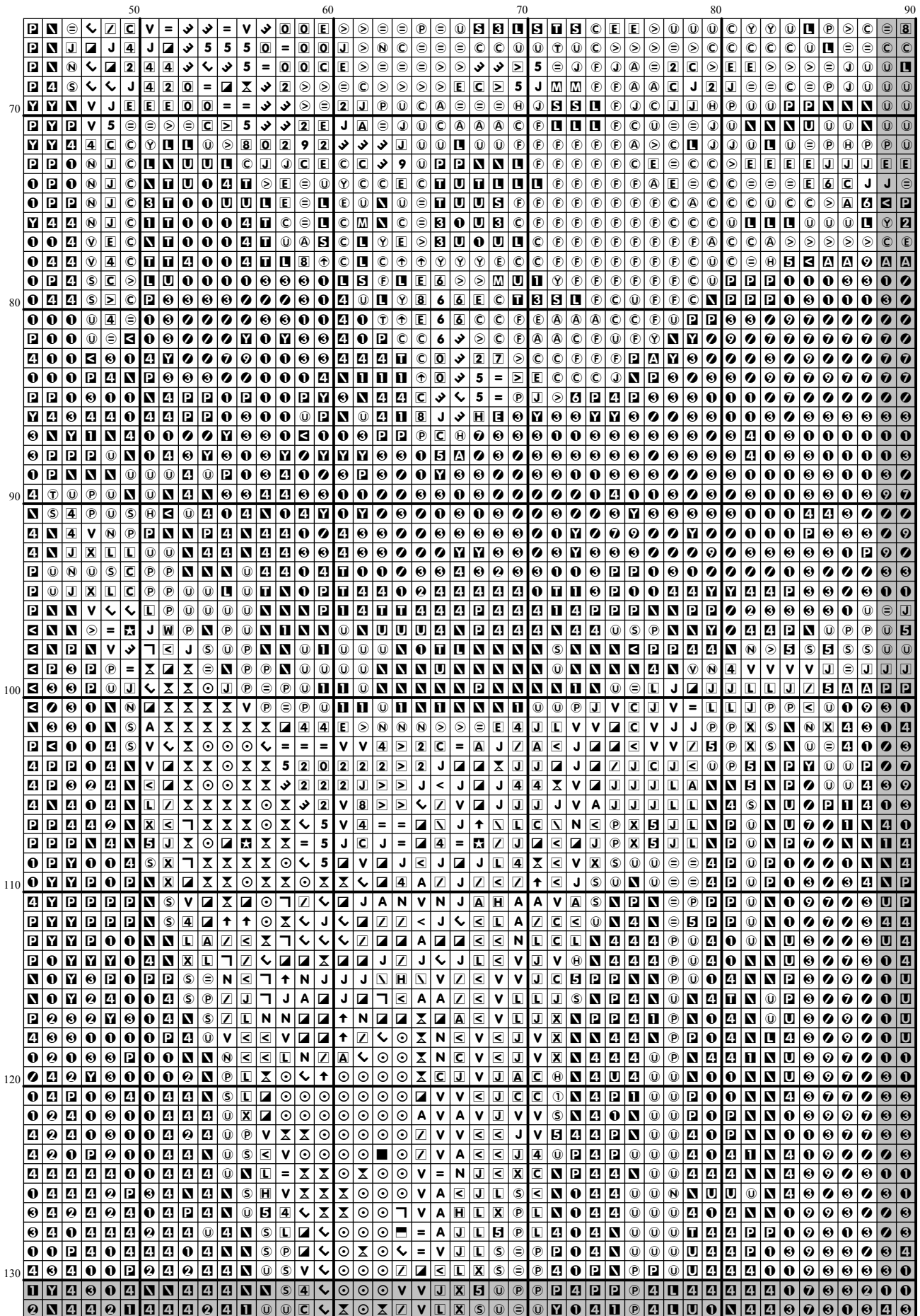


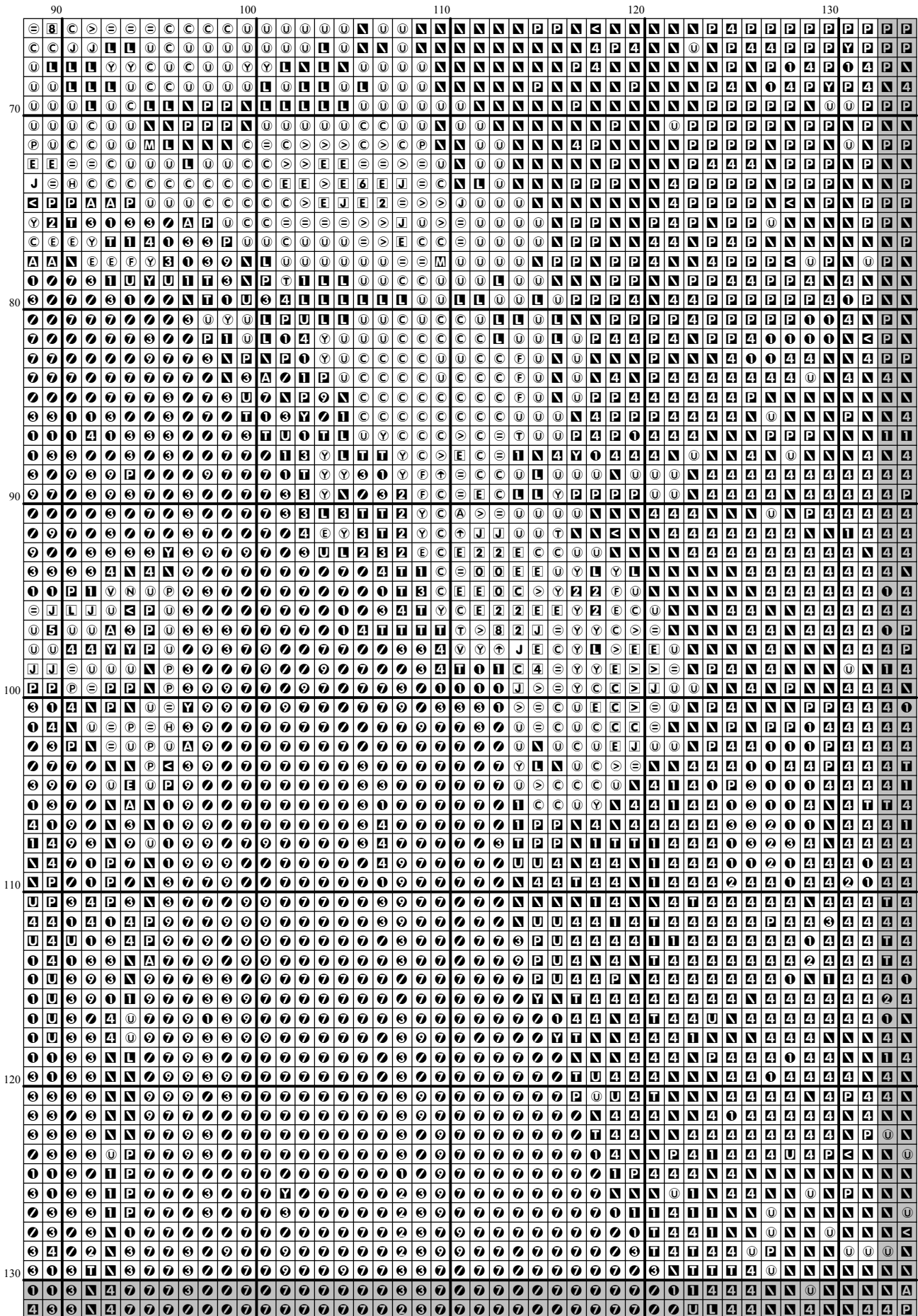




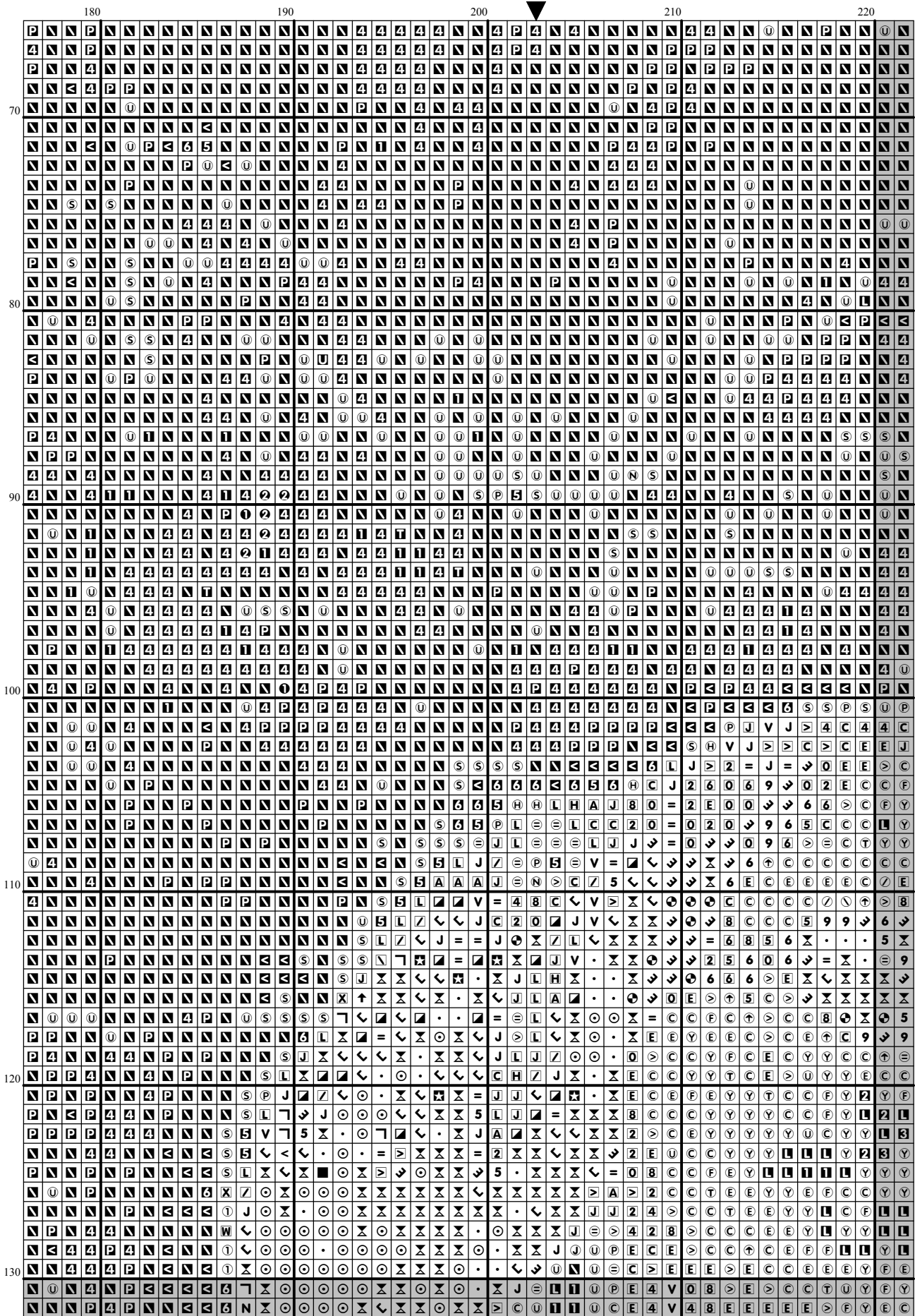


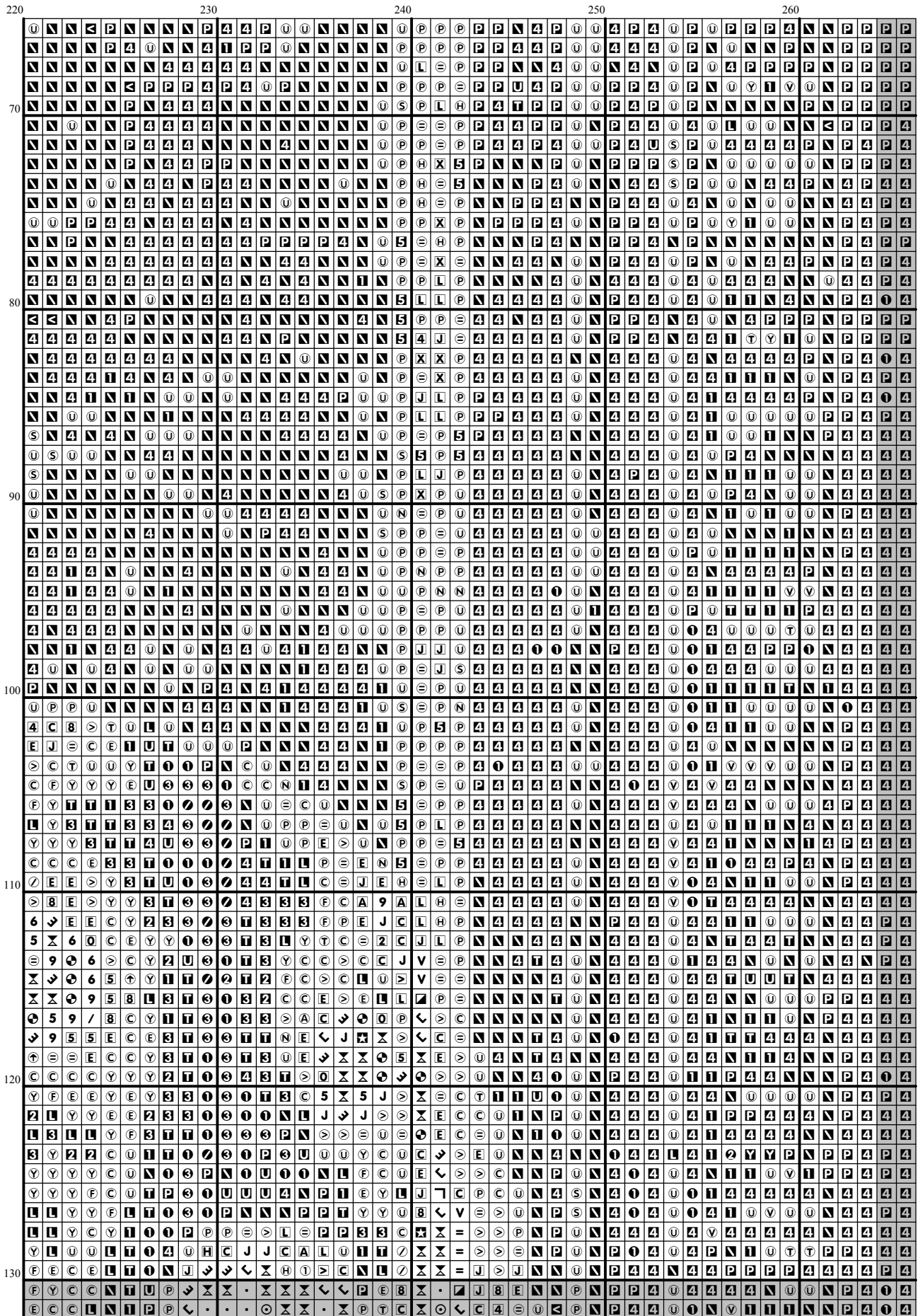


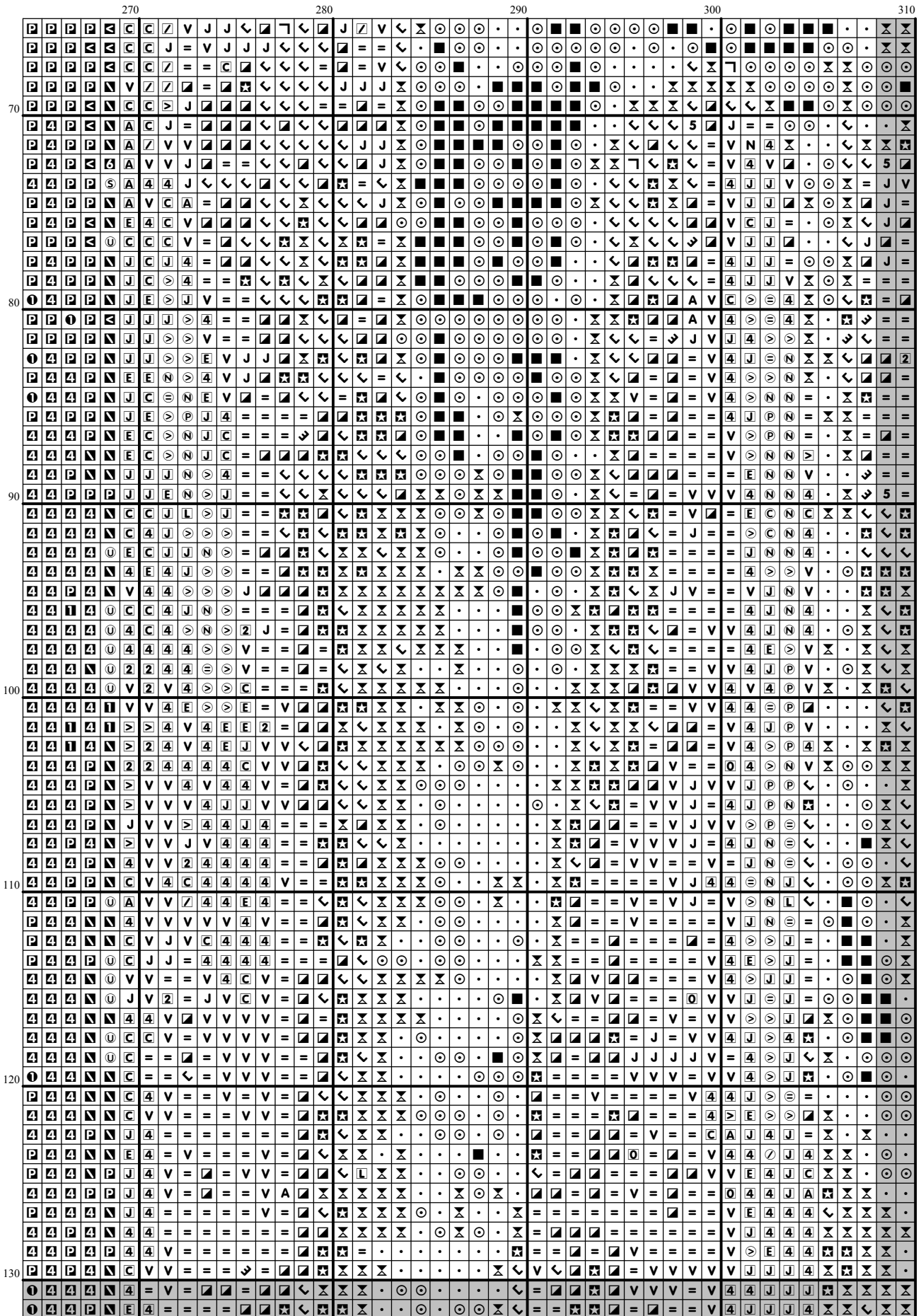




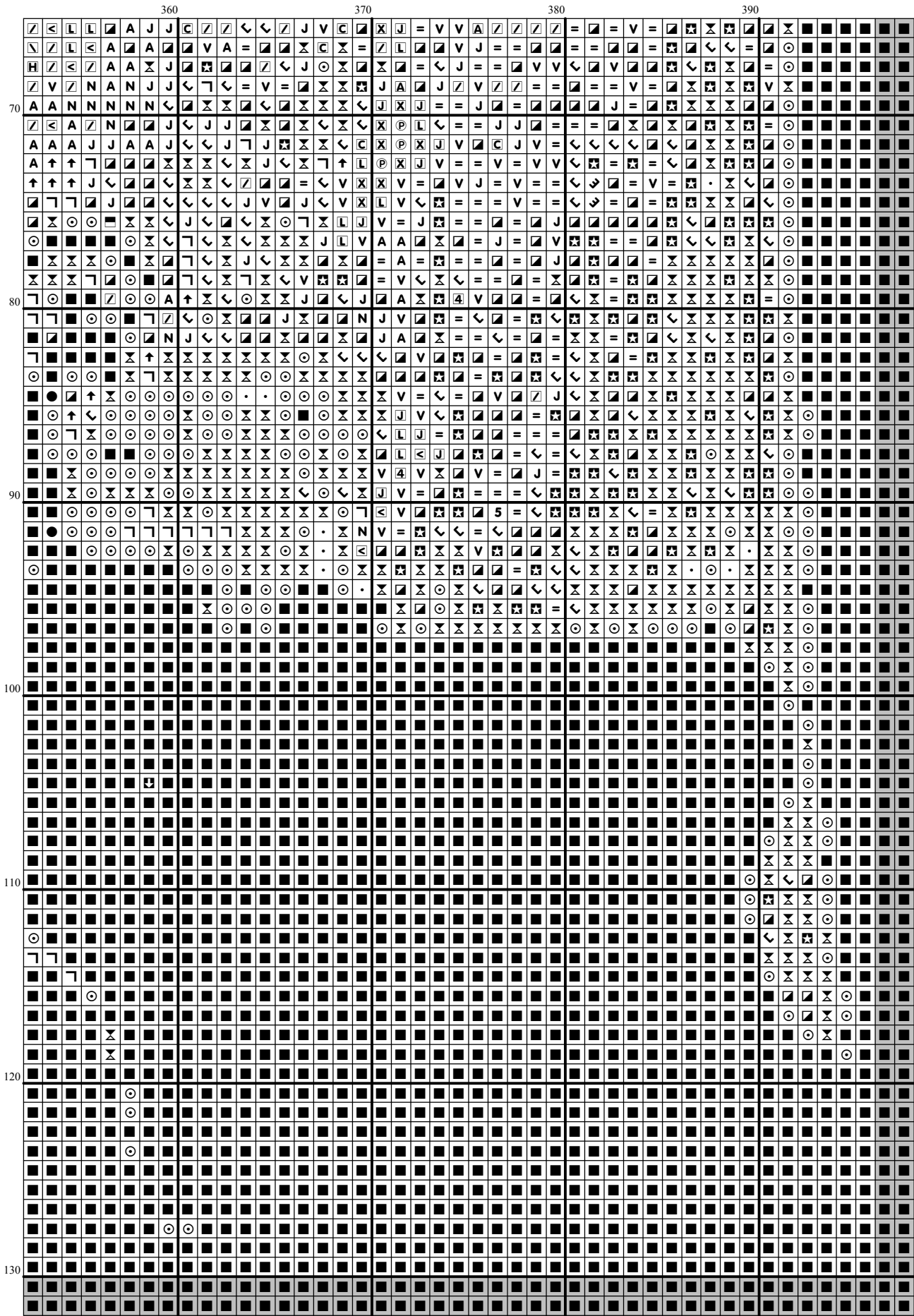
[illegible]

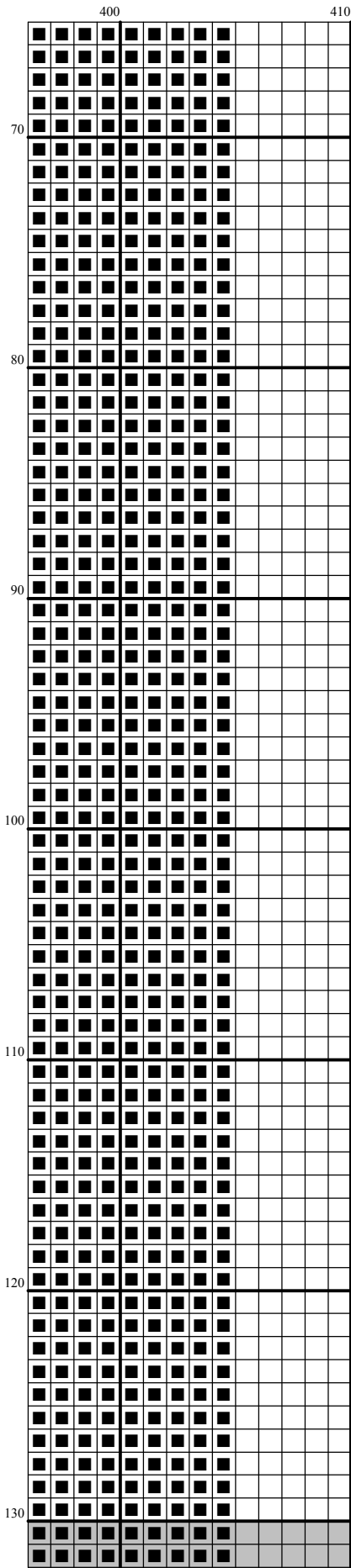


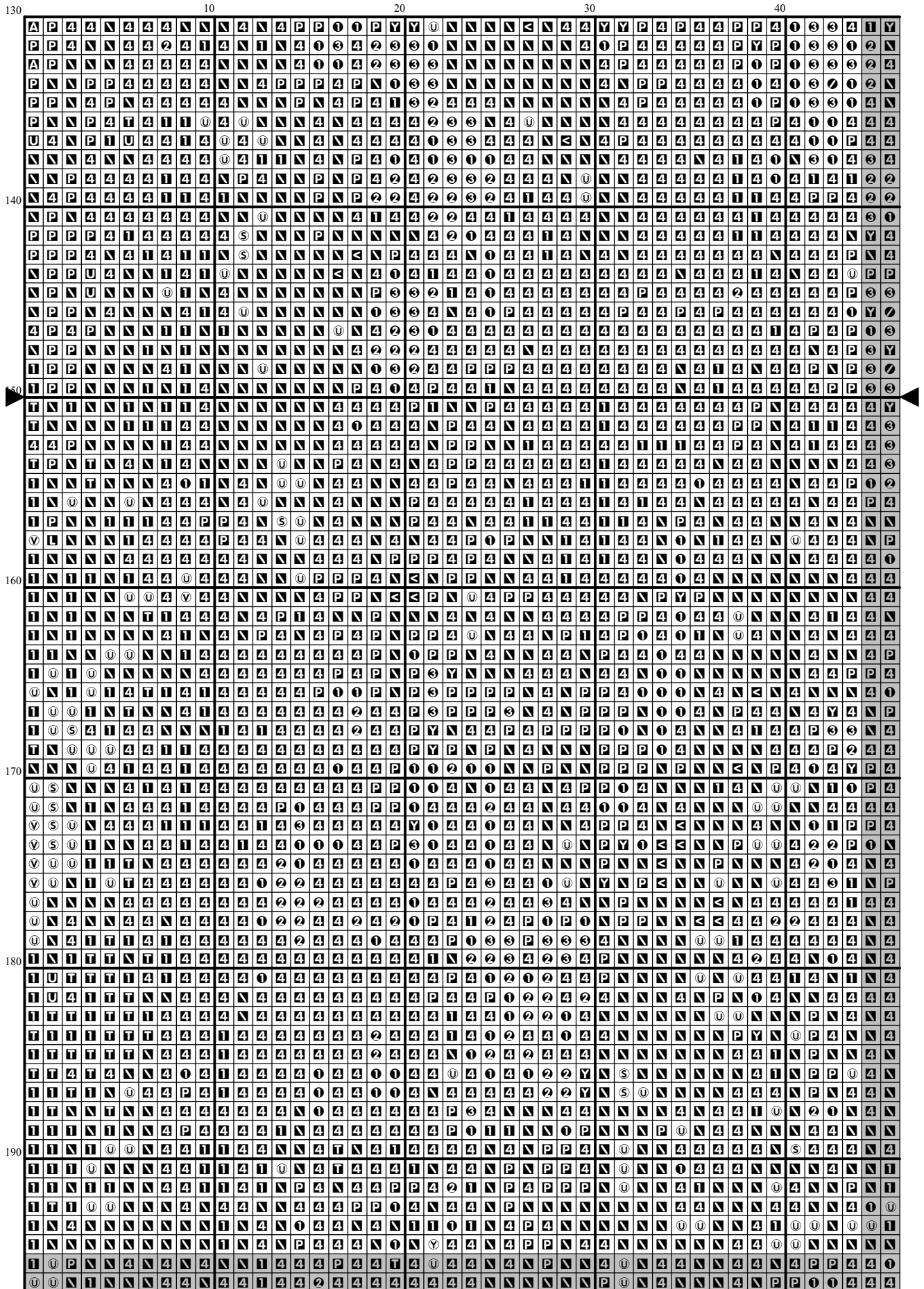


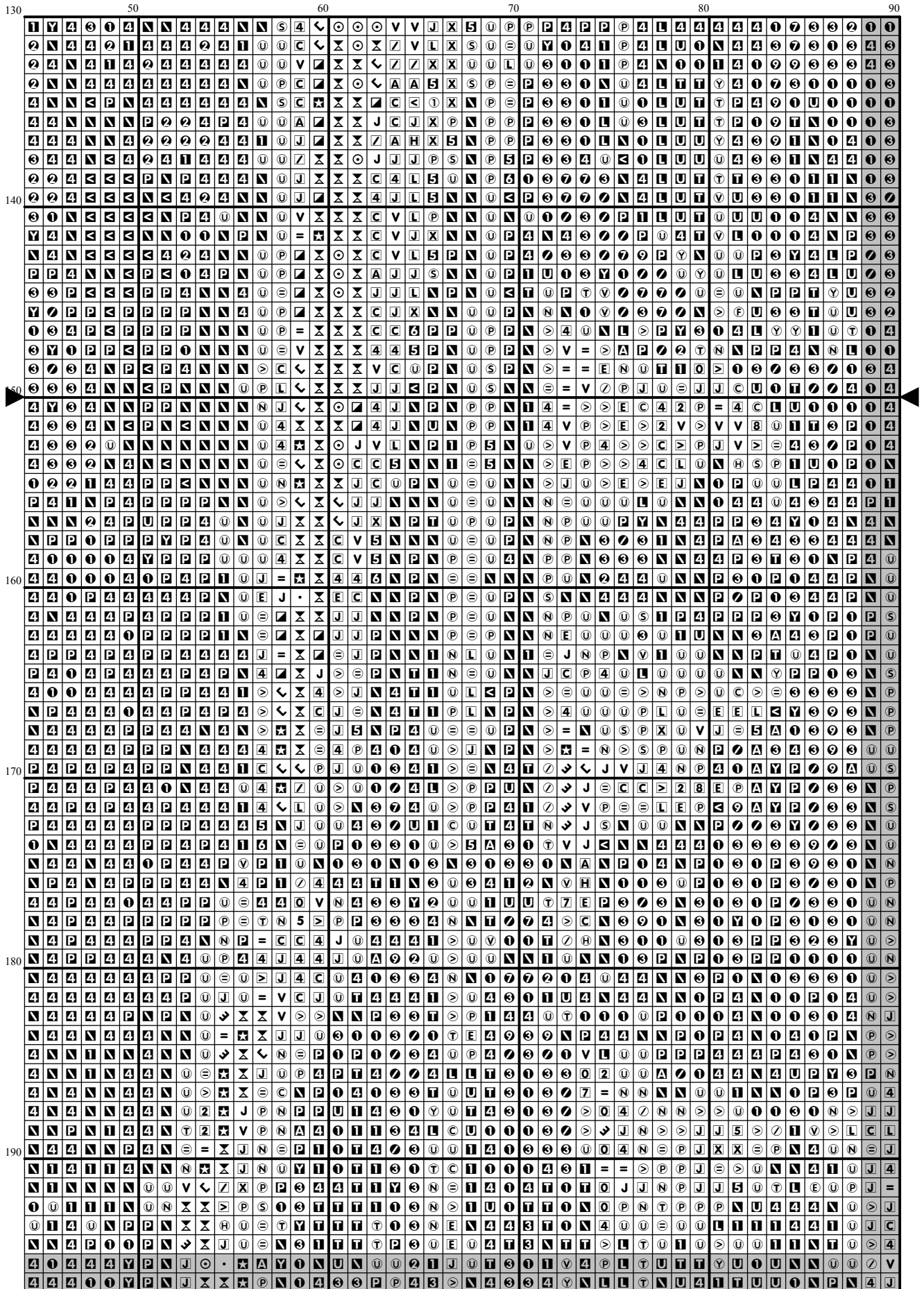


[illegible]



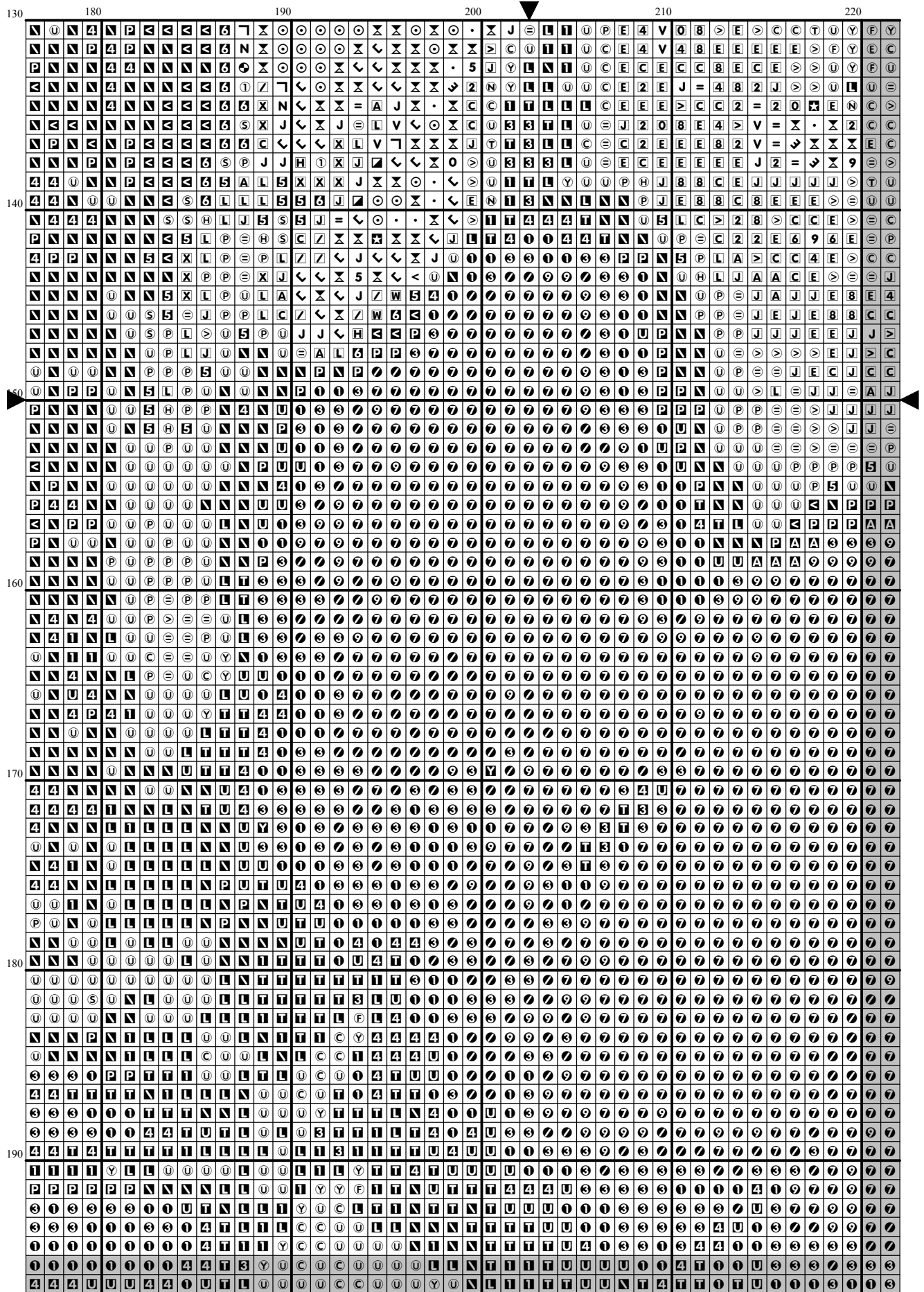


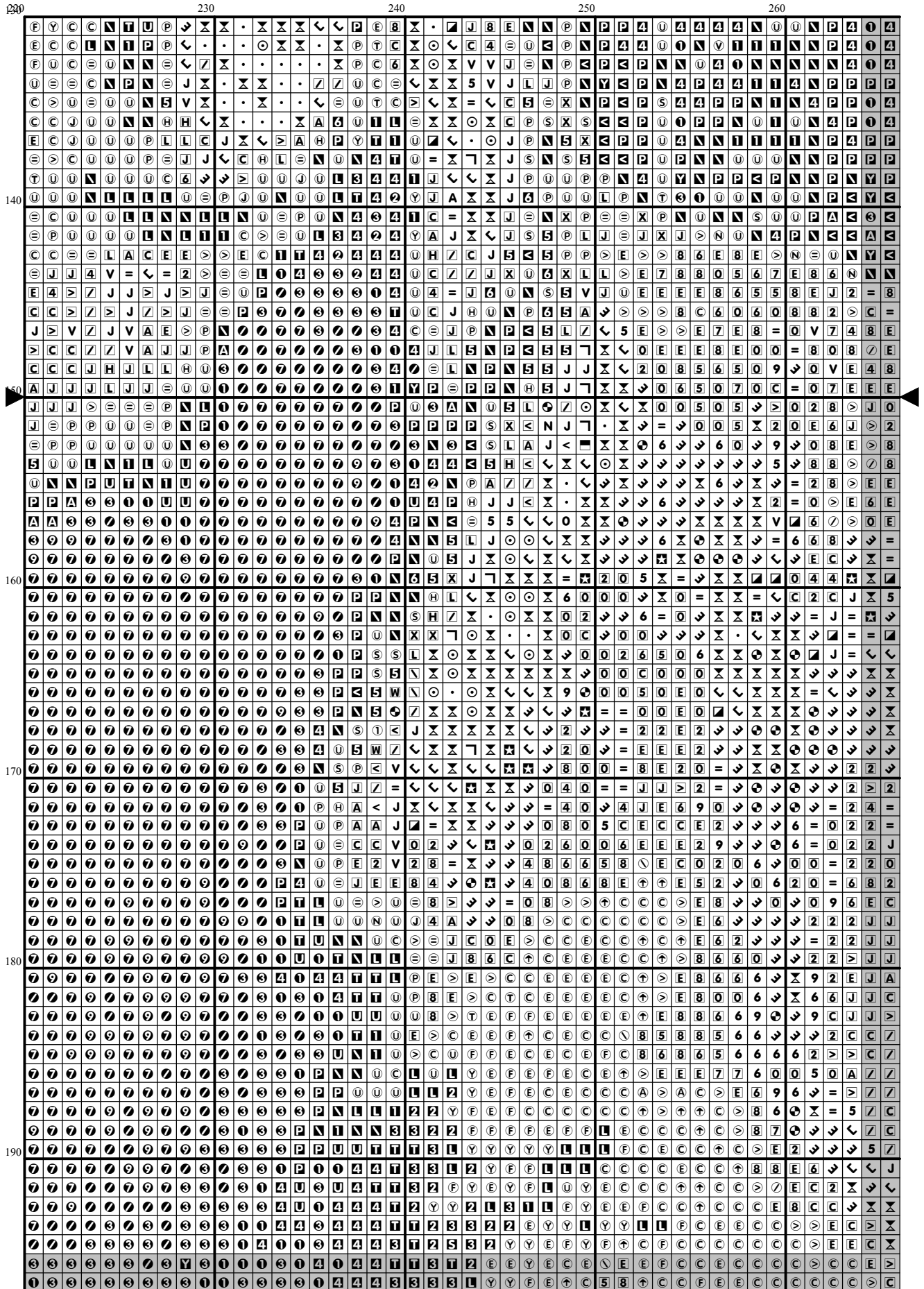


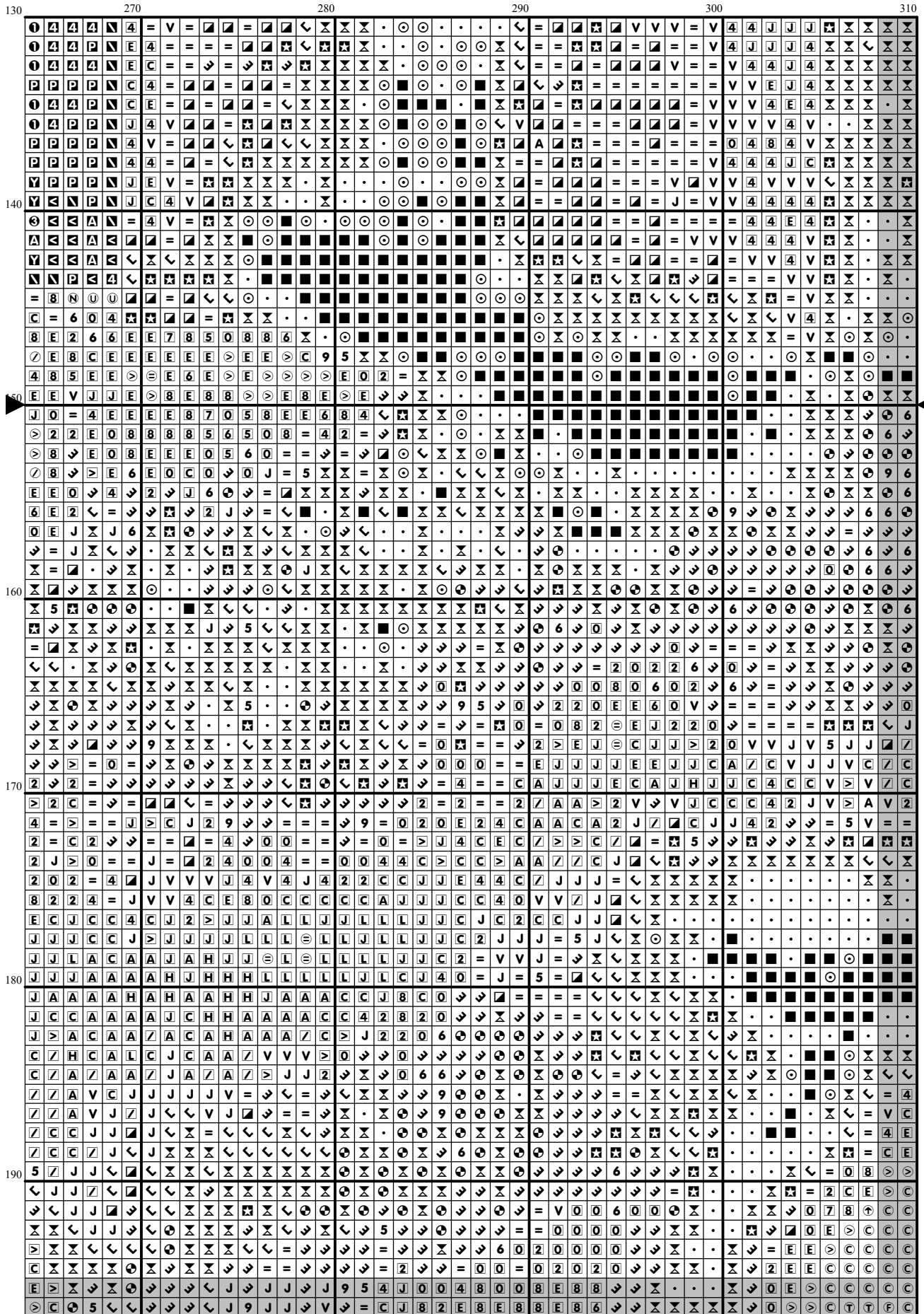


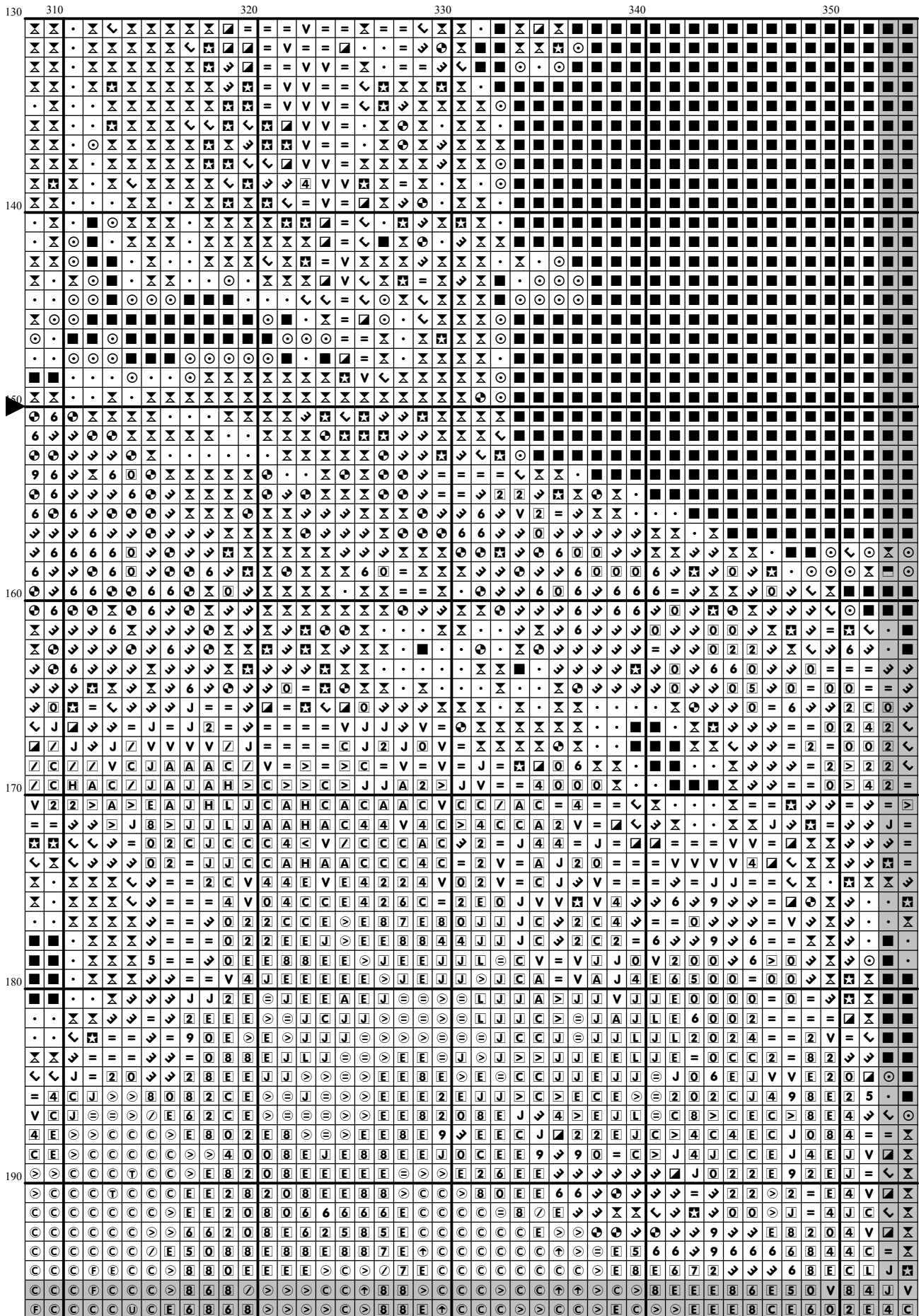
[illegible]

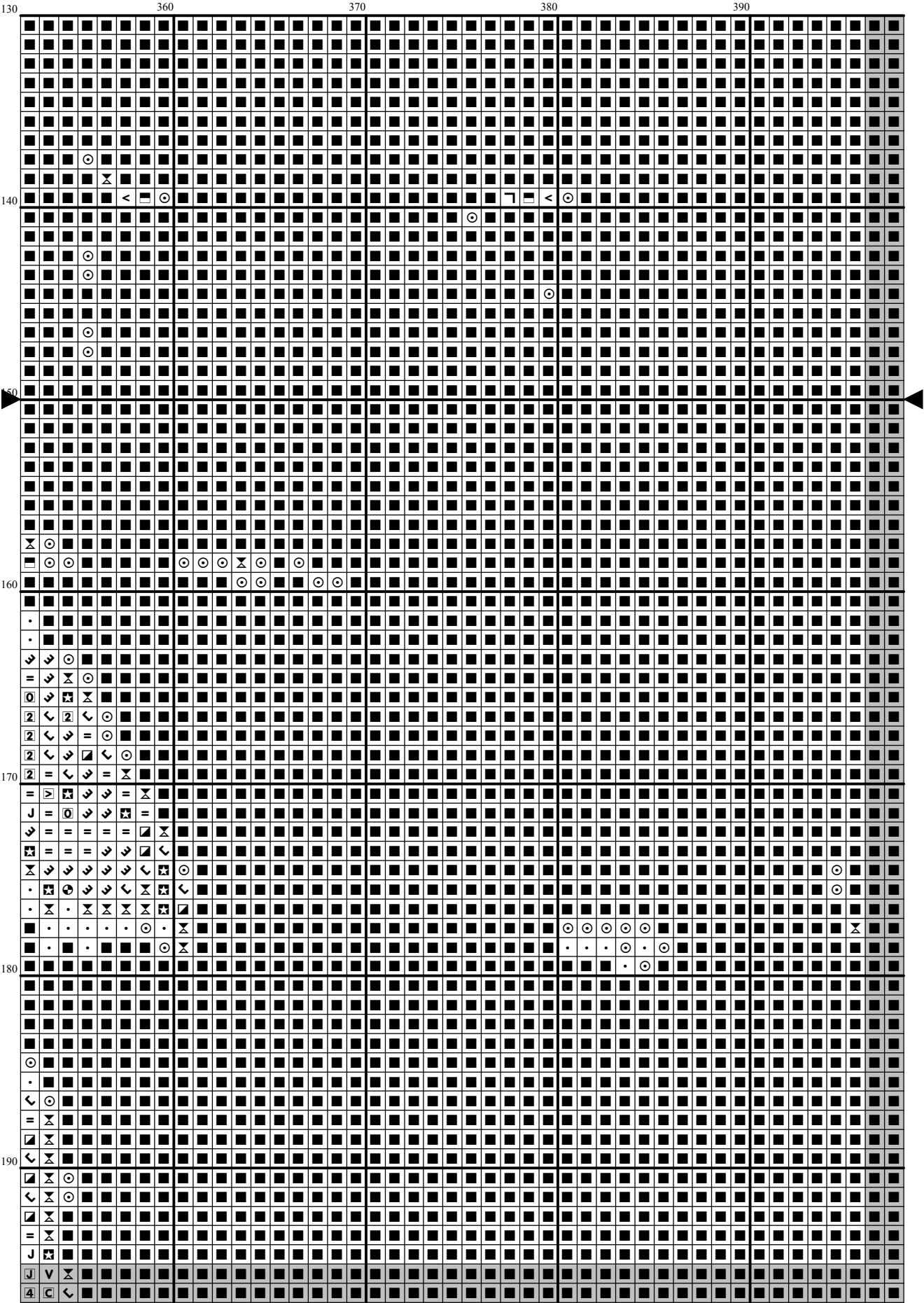
[illegible]

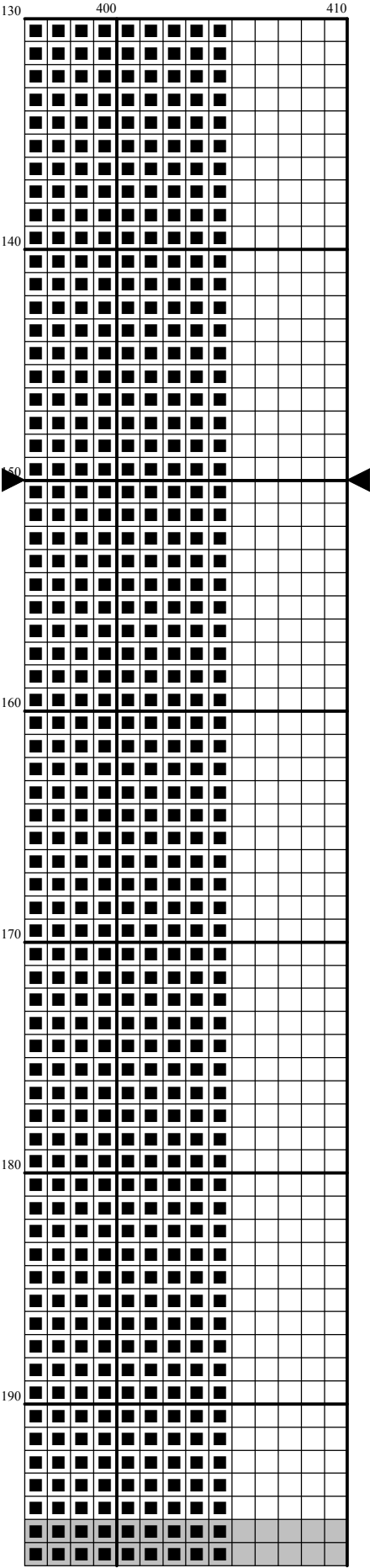




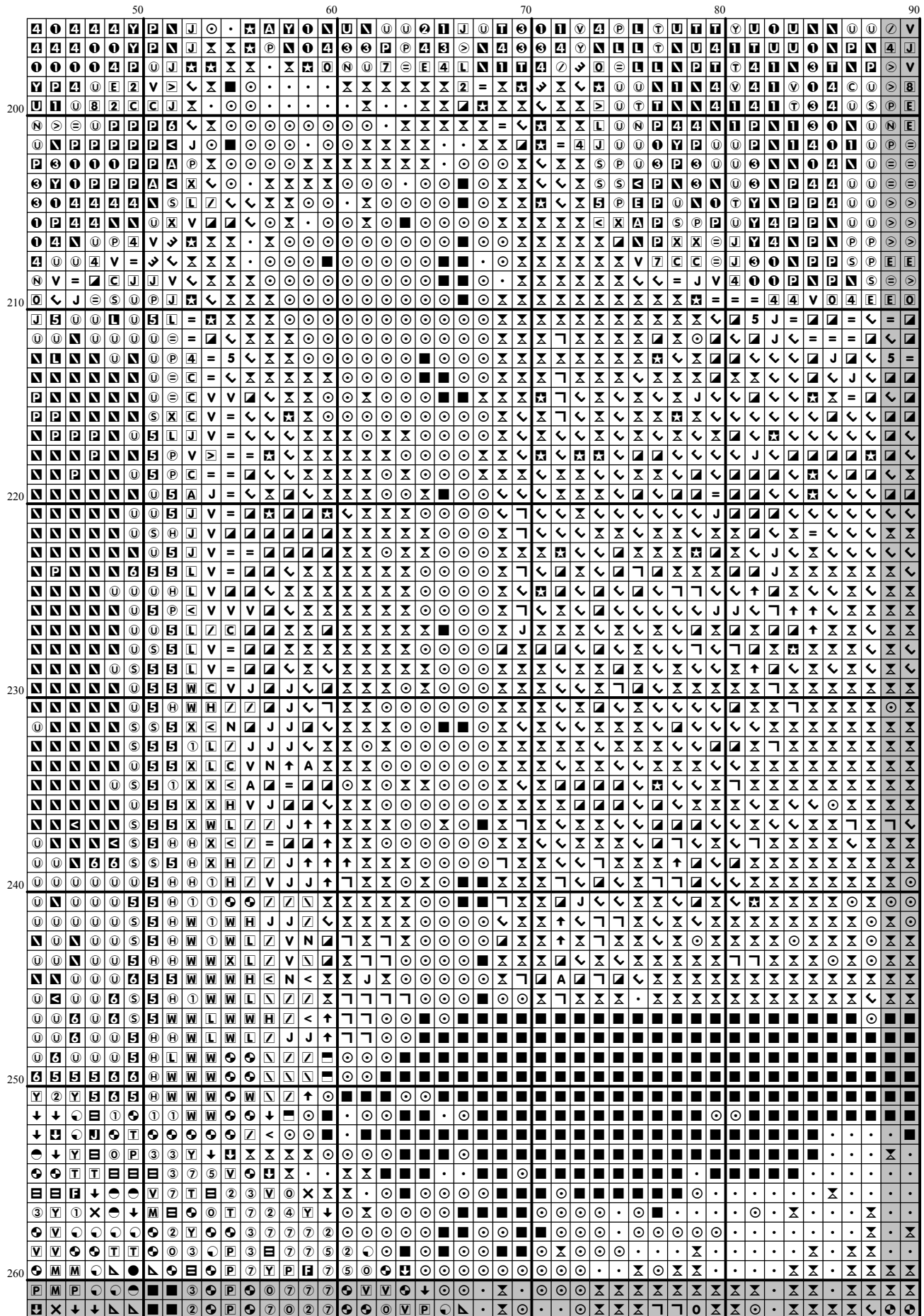


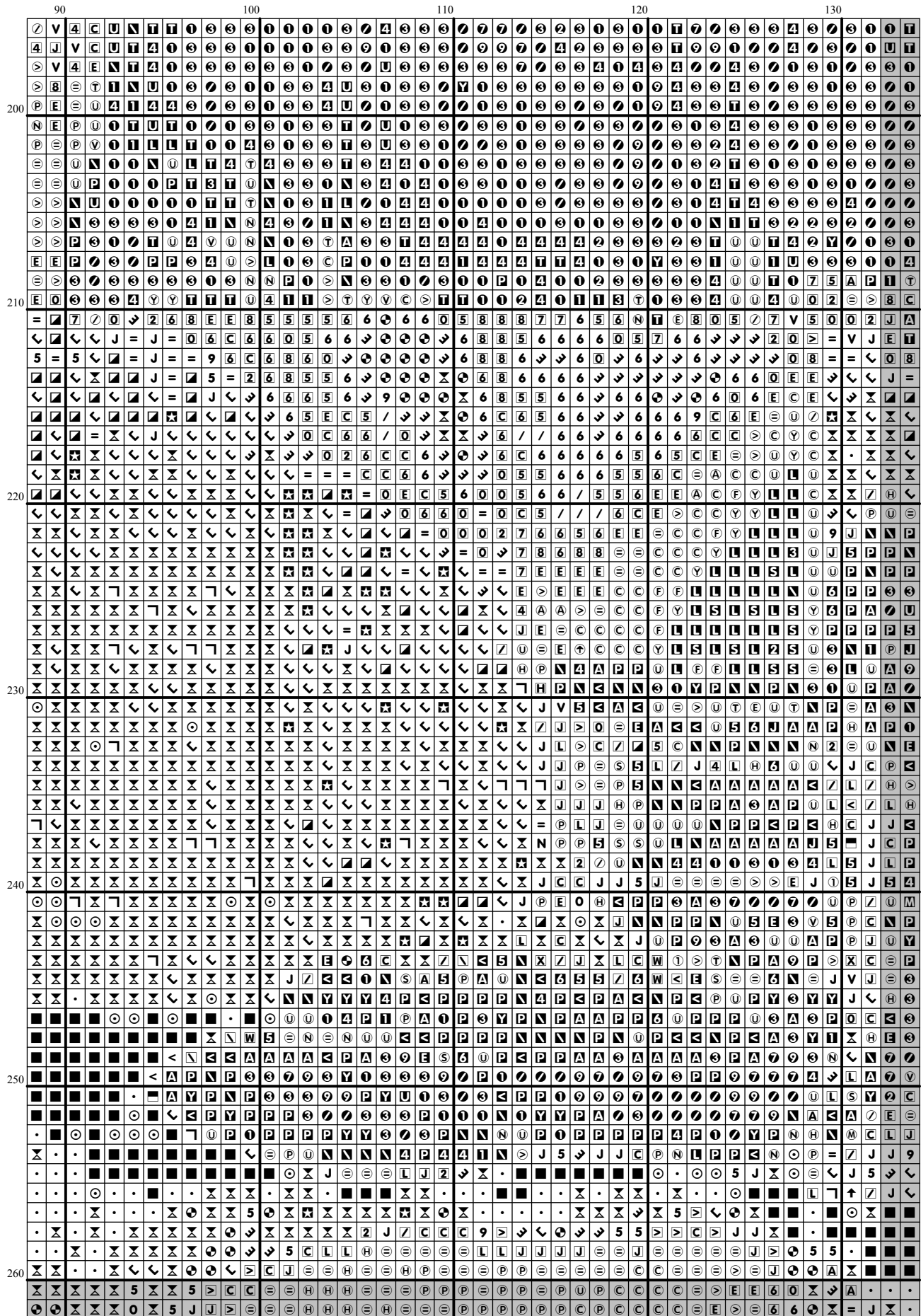


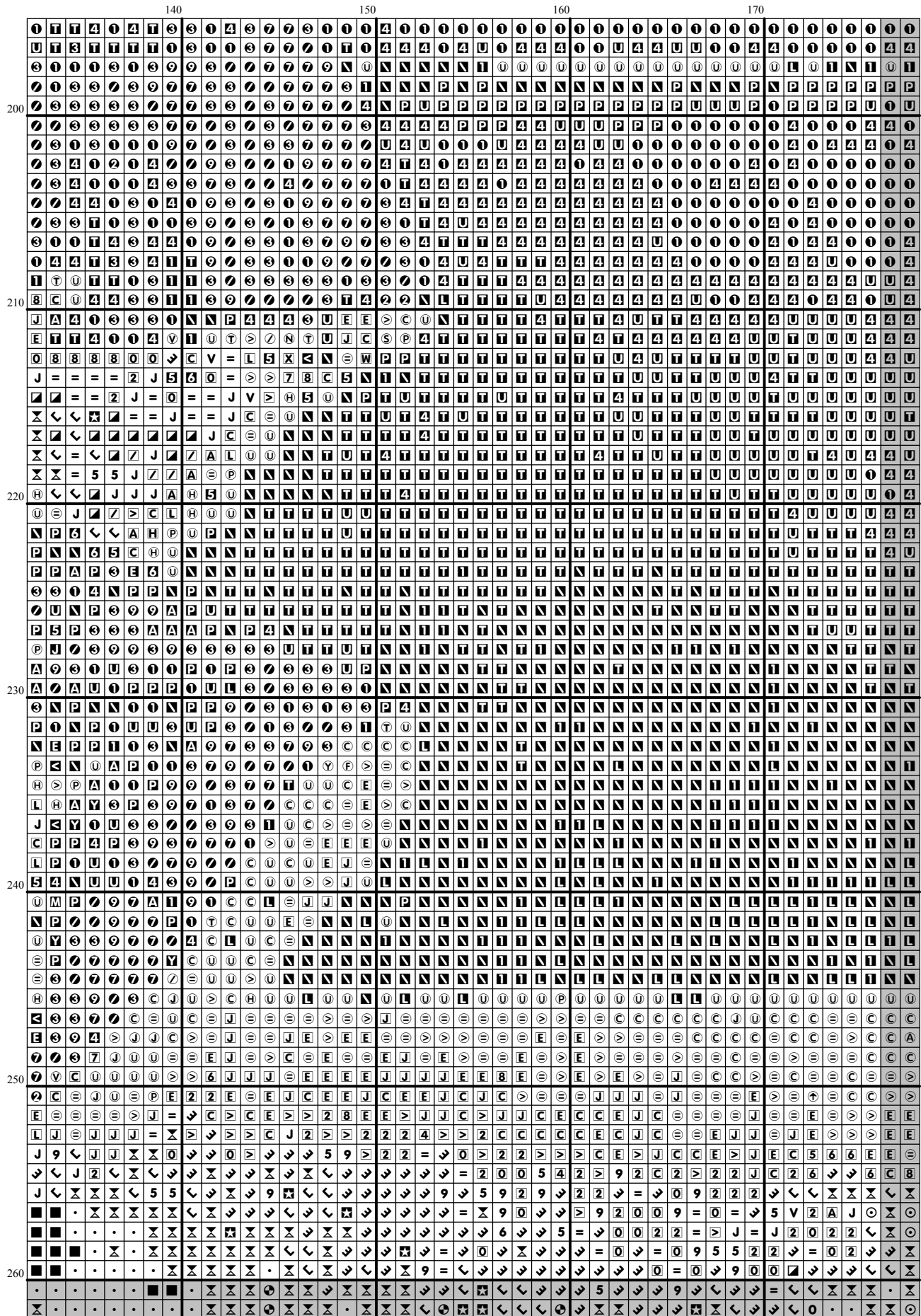


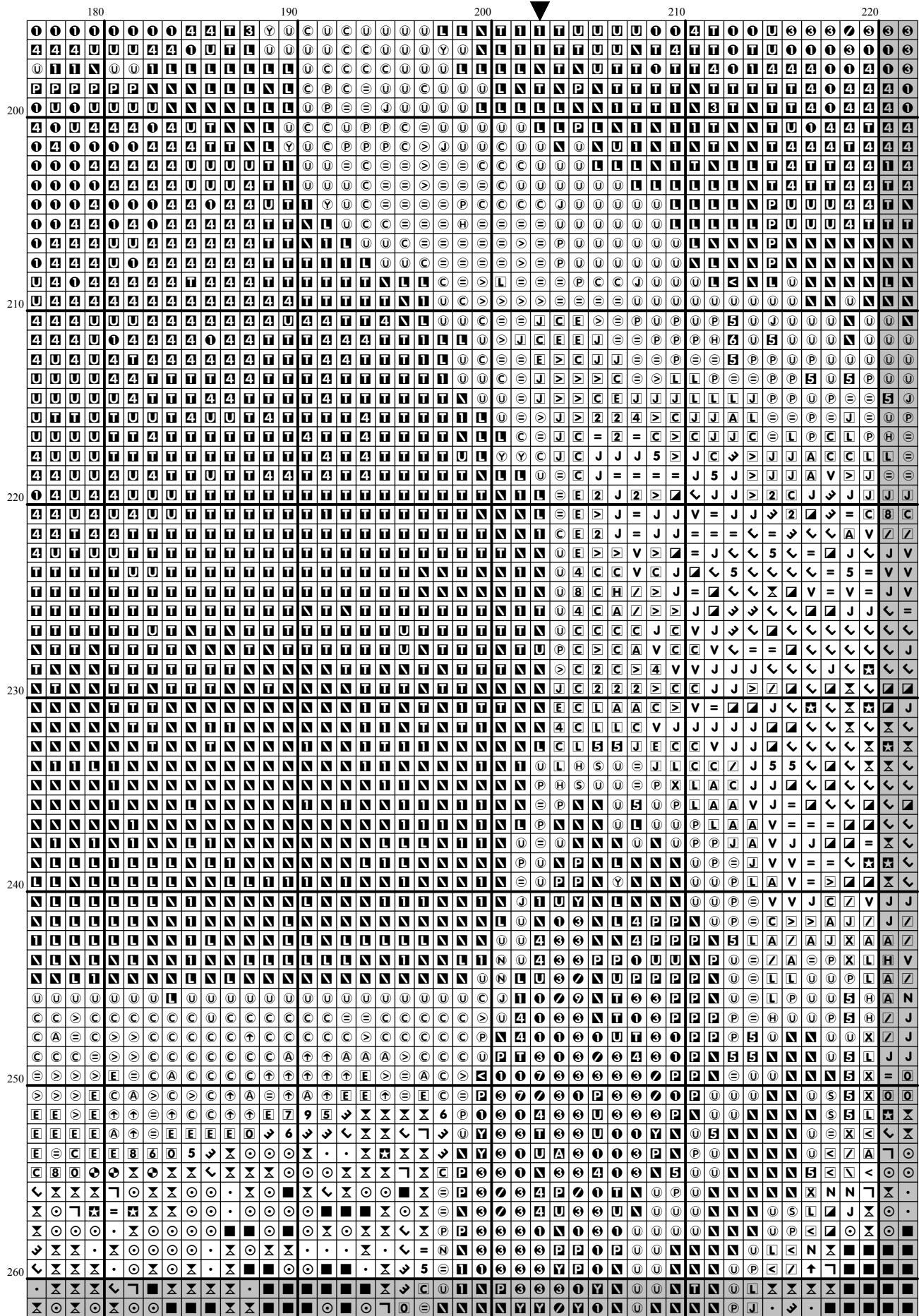


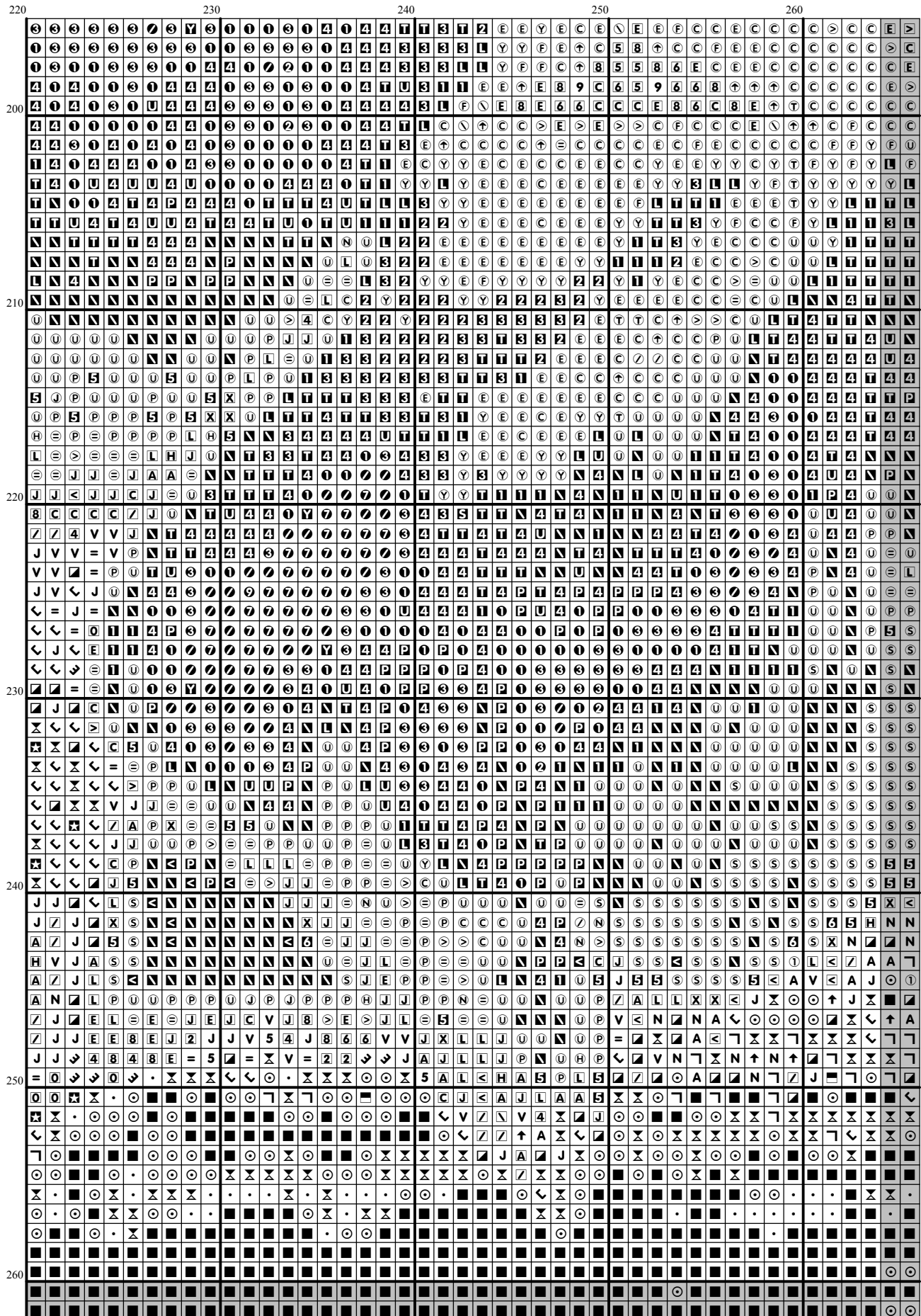


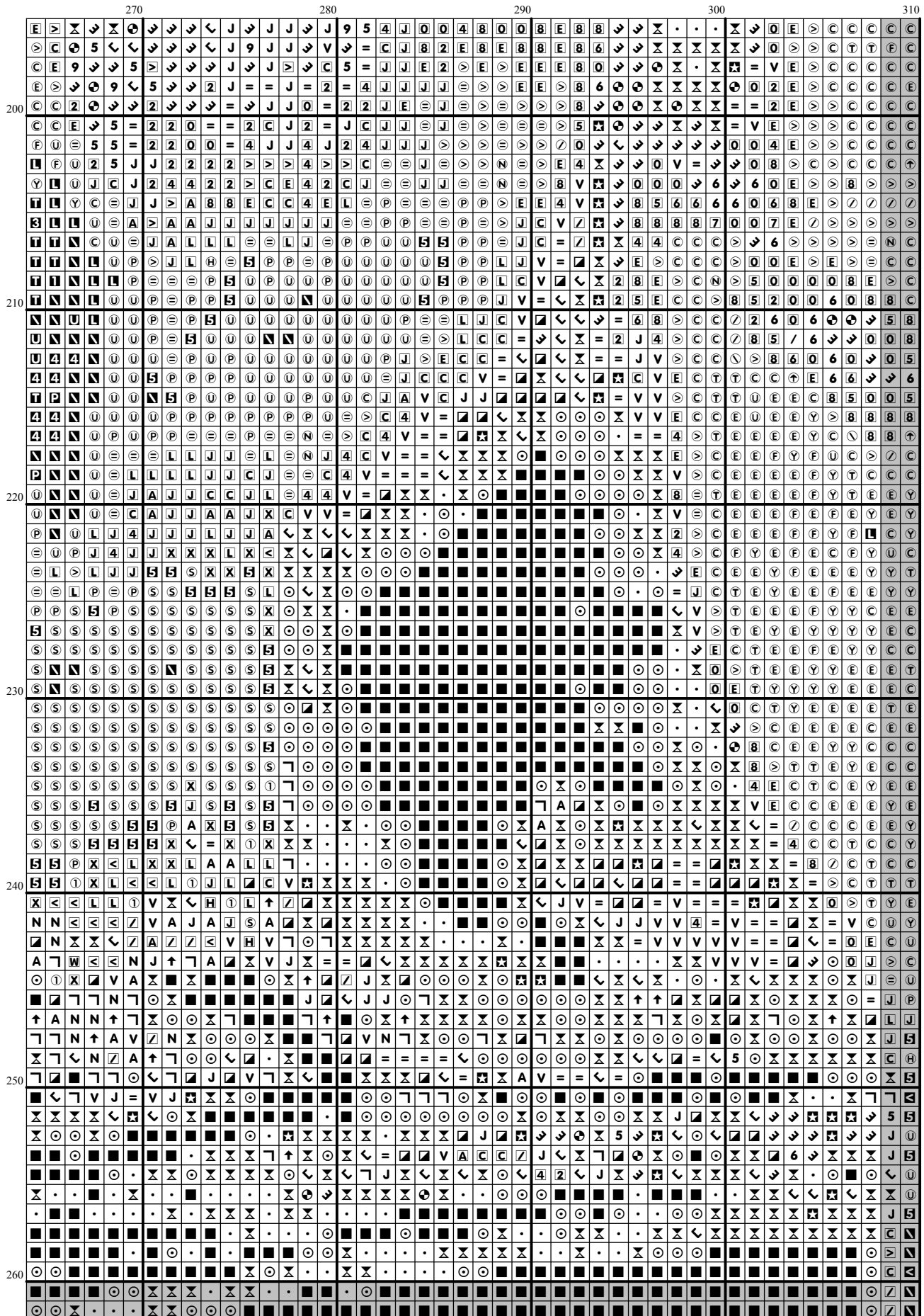




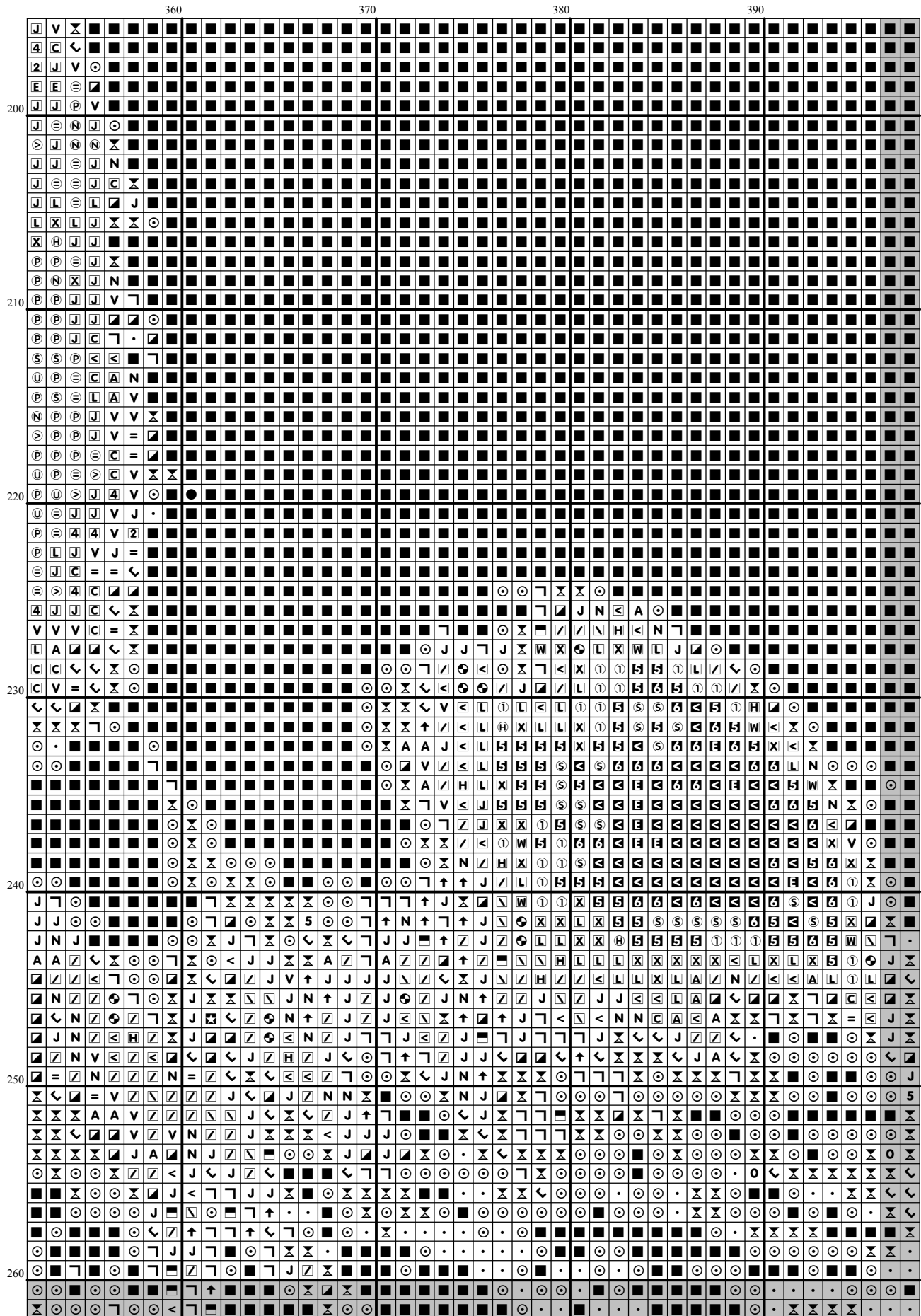


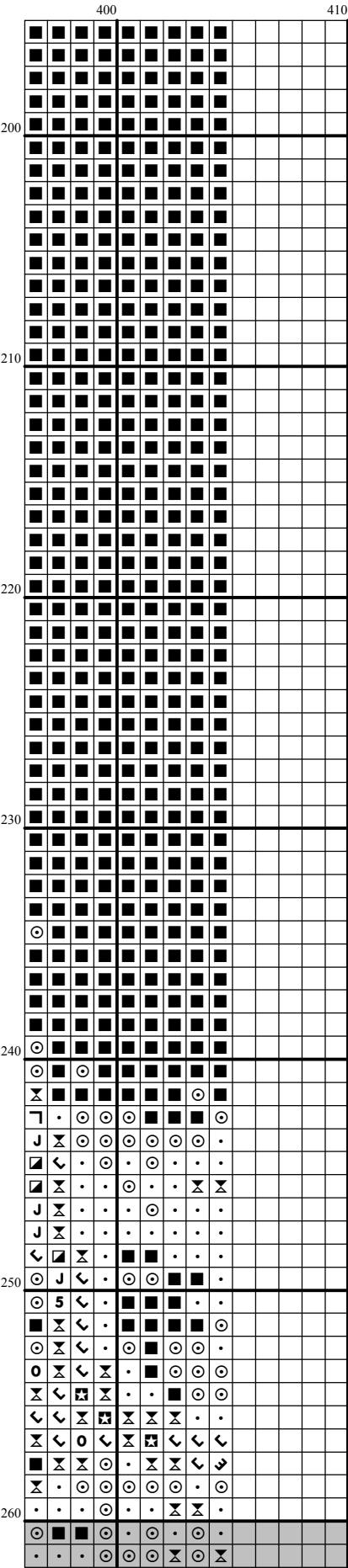






[illegible]



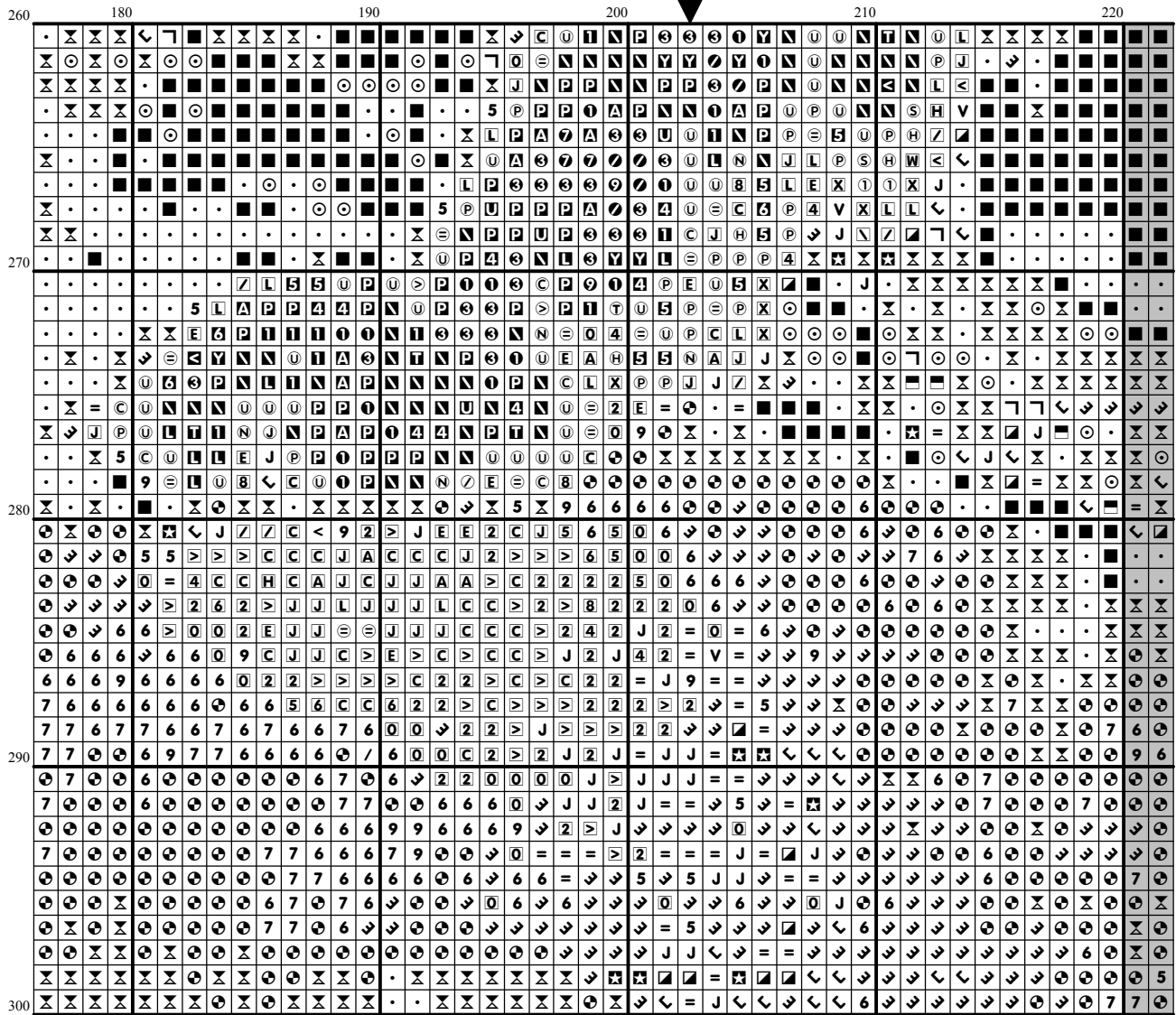


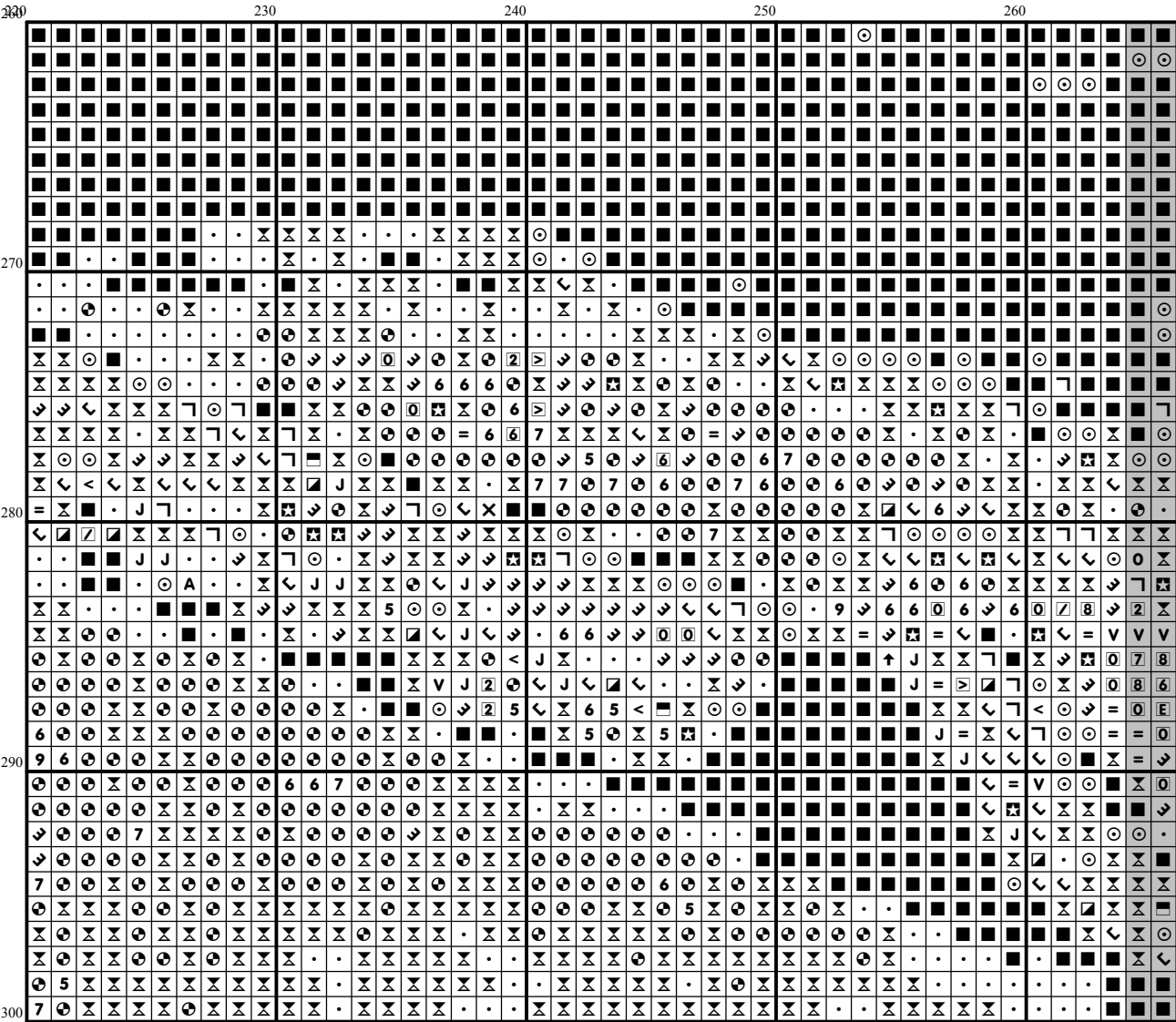
[illegible]

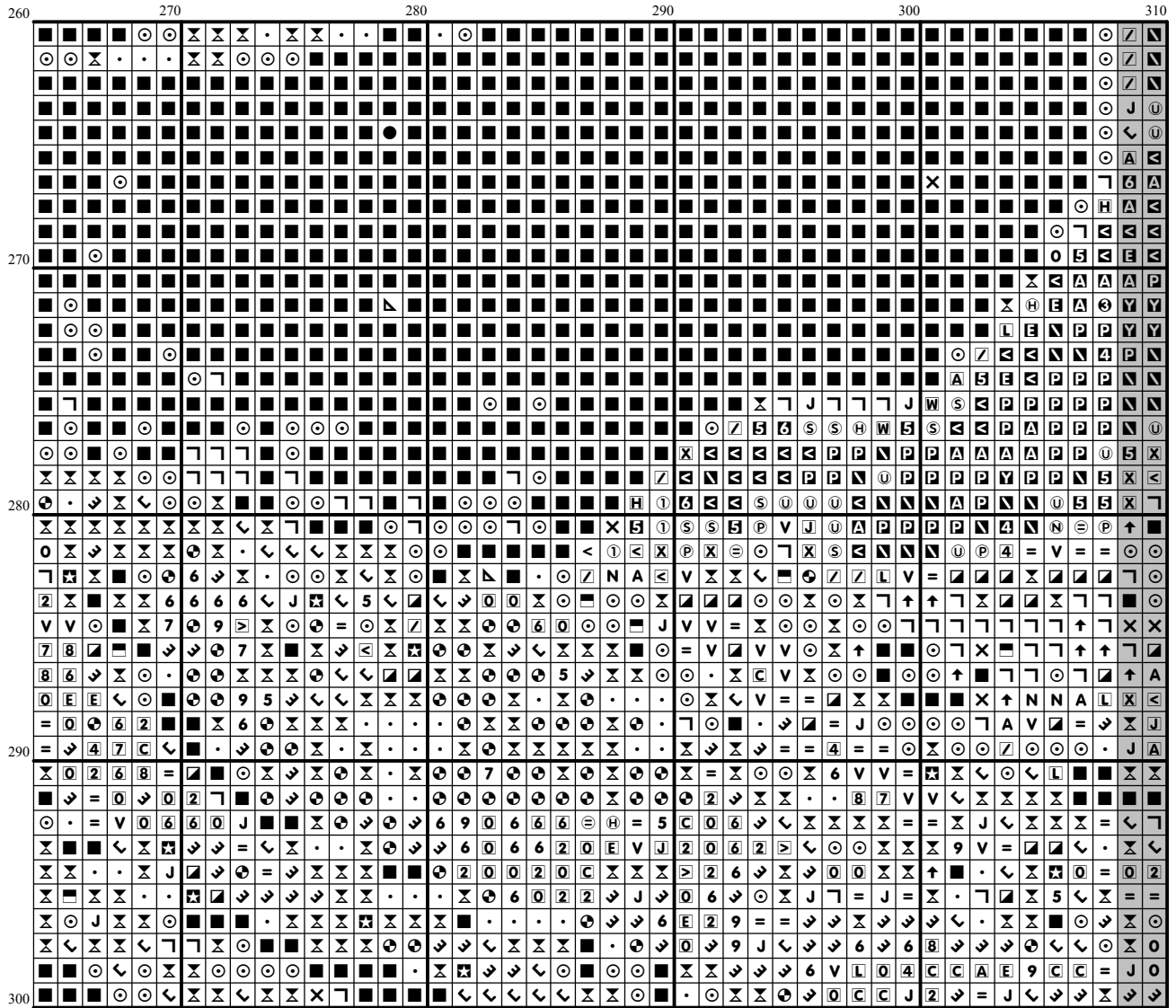
[illegible]

[illegible]

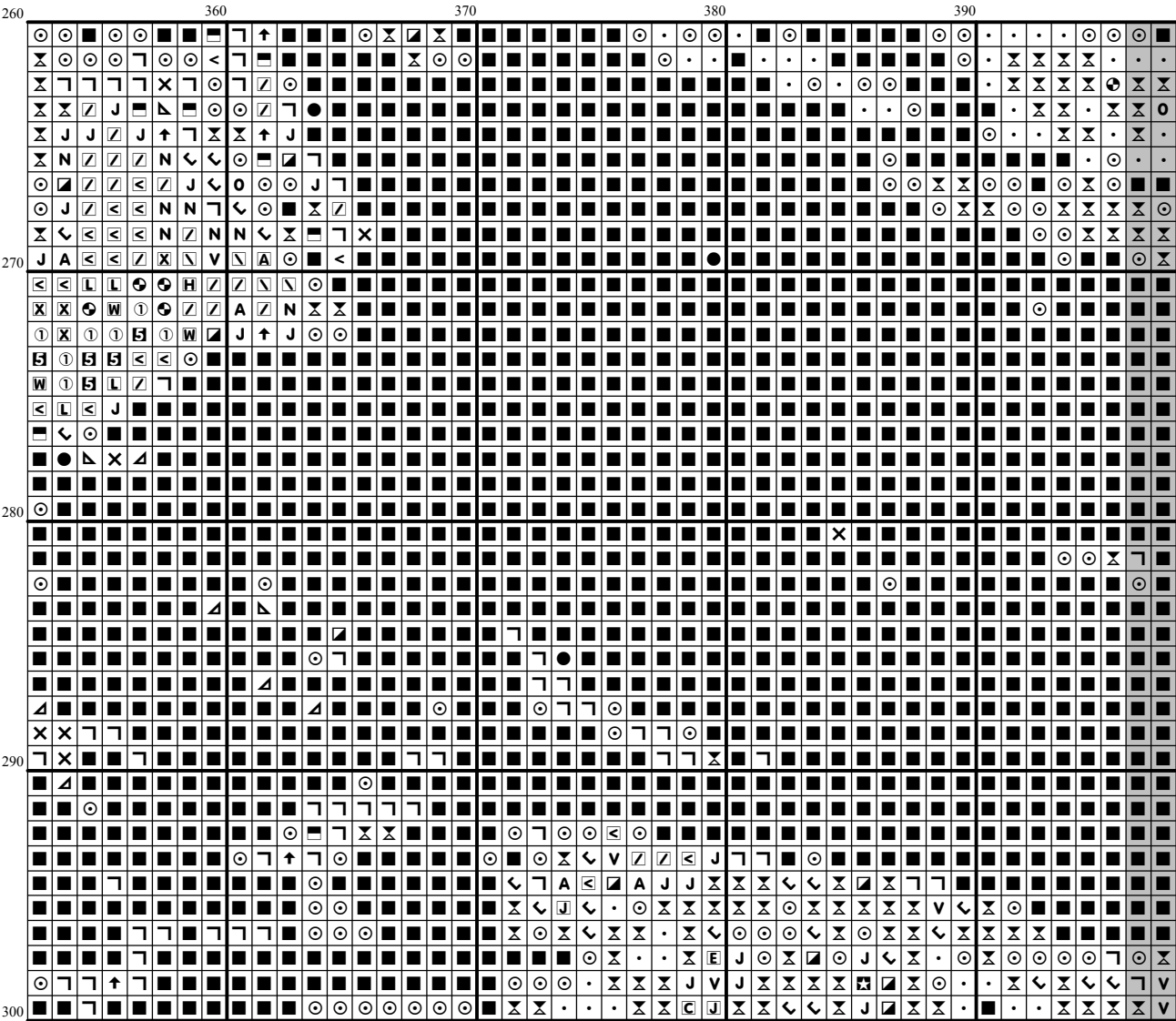
[illegible]

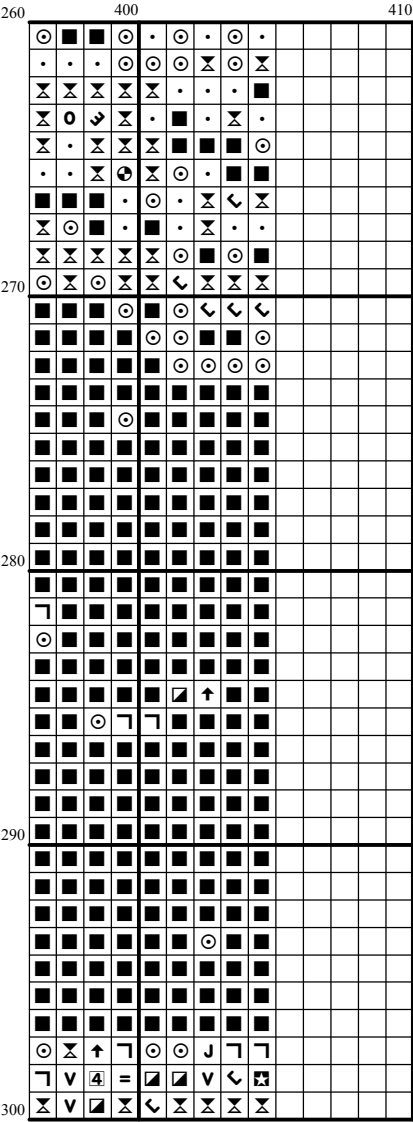






[illegible]





Instructions and Symbol Key for Design "Ch 180 A Special Pleader"

Fabric: 14 count white Aida

Stitches: 405 x 300

Size: 28.93 x 21.43 inches or 73.48 x 54.43 cm

Colours: DMC

Use **2** strands of thread for cross stitch

Sym	No.	Colour Name	Sym	No.	Colour Name
Ⓢ	152	Antique rose	•	154	Prune rose
Ⓣ	161	Ash blue	⦶	167	Dark mustard brown
Ⓦ	169	Pewter grey	Ⓐ	223	Medium dusty pink
7	300	Mahogany	■	310	Black
●	311	Dark polar blue	◐	312	Night blue
◻	317	Steel grey	①	318	Granite grey
Ⓟ	322	Delft blue	Ⓥ	334	Pale indigo blue
/	400	Brown	Ⓒ	407	Clay brown
Ⓔ	415	Chrome grey	6	433	Chocolate brown
◐	435	Tabacco brown	Ⓨ	437	Camel
Ⓛ	451	Shell pink grey	✕	500	Ivy green
⑦	519	Sea spray blue	Ⓢ	524	Light grey green
<	535	Stone grey	Ⓨ	597	Iceland blue
③	598	Lagoon turquoise	2	610	Dark golden brown
4	611	Sisal brown	Ⓝ	612	String brown
9	632	Cocoa	ⓐ	640	Green grey
◻	644	Light green grey	Ⓩ	645	Dark steel grey
Ⓐ	646	Platinum grey	✕	647	Rock grey
Ⓢ	648	Pepper grey	◐	712	Cream
=	730	Khaki green	Ⓜ	734	Light Olive green
Ⓛ	738	Sahara cream	Ⓢ	739	Dune cream
Ⓐ	762	Pearl grey	ⓐ	775	Summer rain blue
Ⓜ	778	Antique mauve		798	Cobalt blue
④	799	Horizon blue	↘	801	Mink brown
Ⓢ	813	Light blue	Ⓢ	819	Baby pink
Ⓨ	822	Cotton cream	ⓐ	823	Blueberry blue
◐	824	Ocean blue	Ⓢ	826	Medium sea blue
Ⓢ	827	Forget-me-not blue	Ⓢ	830	Green oak brown
7	831	Green bronze	Ⓢ	838	Dark wood
5	839	Root brown	Ⓢ	840	Hare brown
Ⓛ	842	Beige rope	■	844	Pepper black
Ⓢ	869	Coffee brown	ⓐ	890	Deep forest green
Ⓢ	898	Teak brown	↓	930	Slate grey
◐	931	Blue grey	ⓐ	934	Algae green
↑	935	Undergrowth green	ⓐ	936	Oaktree moss green
Ⓐ	937	Moss green	✕	938	Espresso brown
●	939	Dark navy blue	Ⓢ	950	Beige
Ⓥ	3011	Artichoke green	↘	3021	Cliff grey
Ⓟ	3023	Light platinum grey	Ⓢ	3024	Pale steel grey
Ⓟ	3033	Antique silver	Ⓢ	3041	Medium lilac
Ⓢ	3042	Lilac	Ⓨ	3046	Rye beige
Ⓢ	3047	Silver birch beige	Ⓝ	3051	Olive tree green
Ⓢ	3064	Cinnamon brown	Ⓢ	3072	Pale pearl grey
Ⓢ	3078	Pale yellow	Ⓢ	3325	Azur blue
Ⓢ	3363	Herb green	Ⓢ	3371	Ebony
Ⓢ	3747	Pale candy blue	②	3755	Pastel blue
Ⓢ	3756	Cloud blue	Ⓢ	3761	Light Sky Blue
⑤	3766	Light medium blue	2	3771	Sandy rose

⬆	3772	Rosy tan	U	3774	Pale desert sand
S	3779	Pale terracotta	U	3782	Gingerbread brown
J	3787	Wolf grey	▷	3790	Cappuccino brown
U	3799	Anthracite grey	M	3807	Cornflower blue
J	3836	Light grape	3	3856	Pale beechwood
⬆	3857	Dark red wine	6	3858	Medium red wine
C	3860	Taupe mauve	⊖	3861	Light taupe
B	3862	Mocha brown	▷	3863	Otter brown
T	3864	Light mocha brown	⊖	ECRUT	ECRUT

Use **1** strands of thread for backstitch

This chart has been designed and printed with our best intentions of being without mistakes. However, the possibility of human error, printing mistakes or the variation of individual stitching does exist, and we regret that we cannot be responsible for this.

Note: The shaded blocks on the chart represent overlapping stitches.
Produced using Cross Stitch Profesional for Windows www.dpsoftware.co.uk
Copyright © Classic Cross Stitch 2004 All rights reserved.