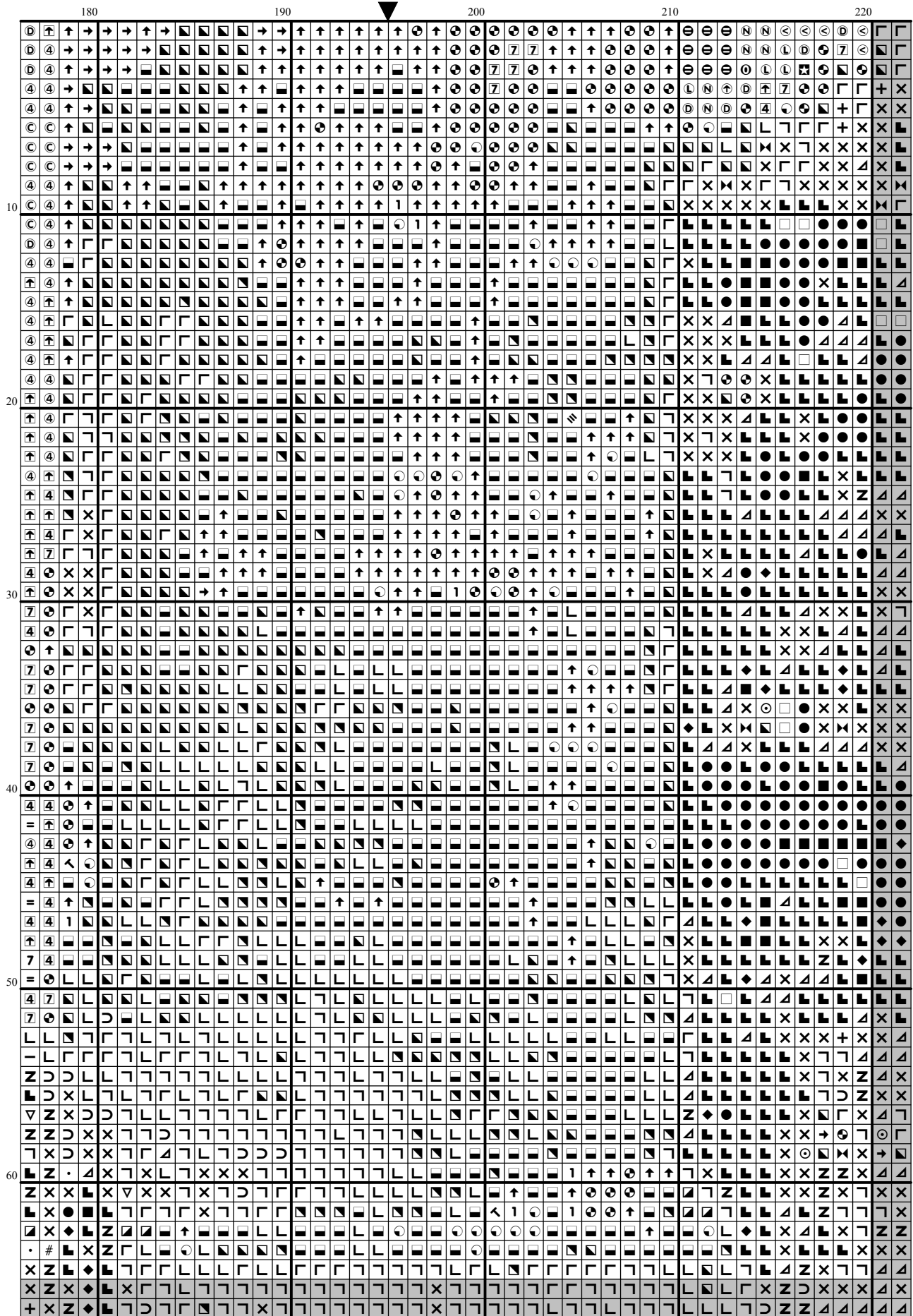
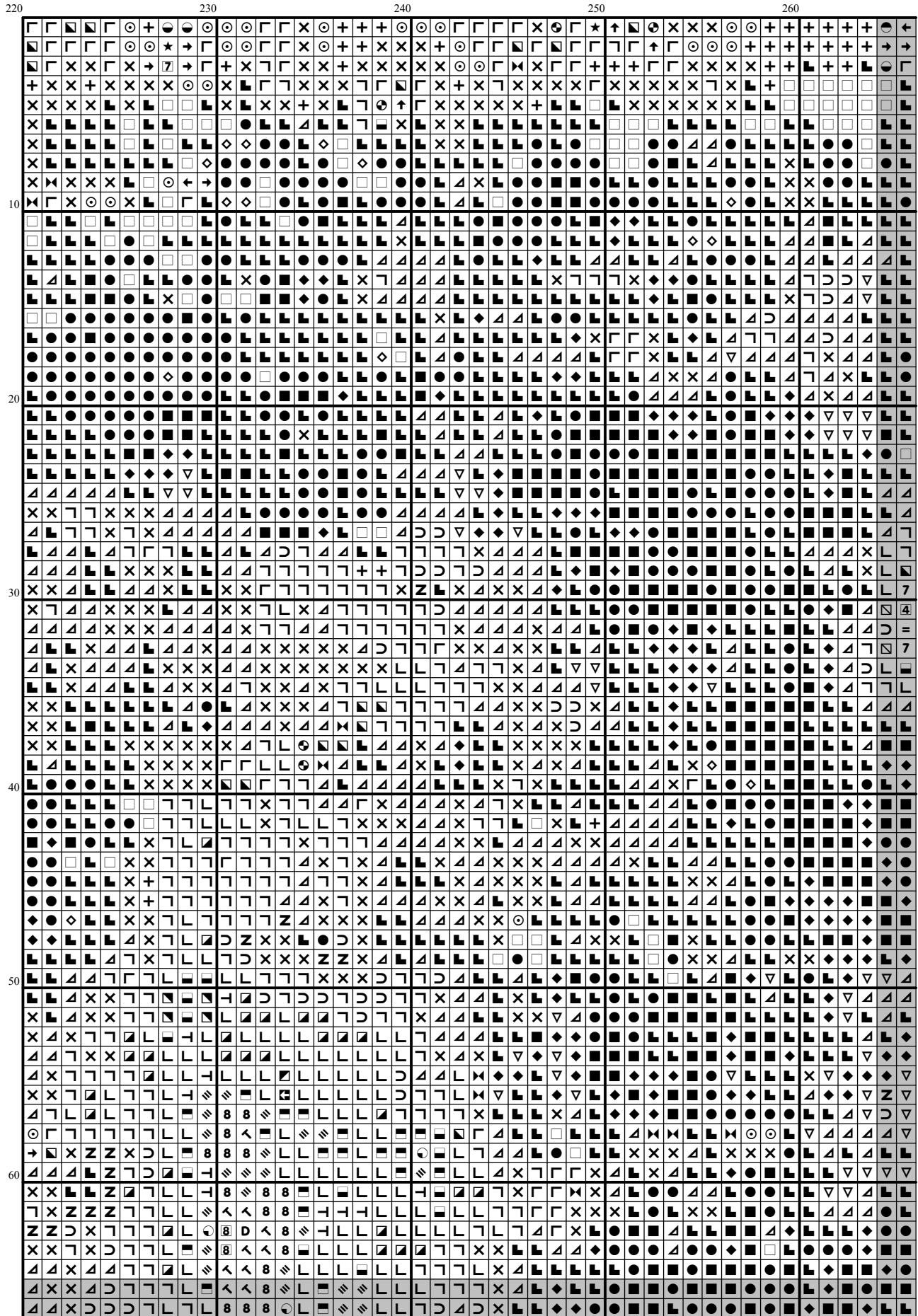
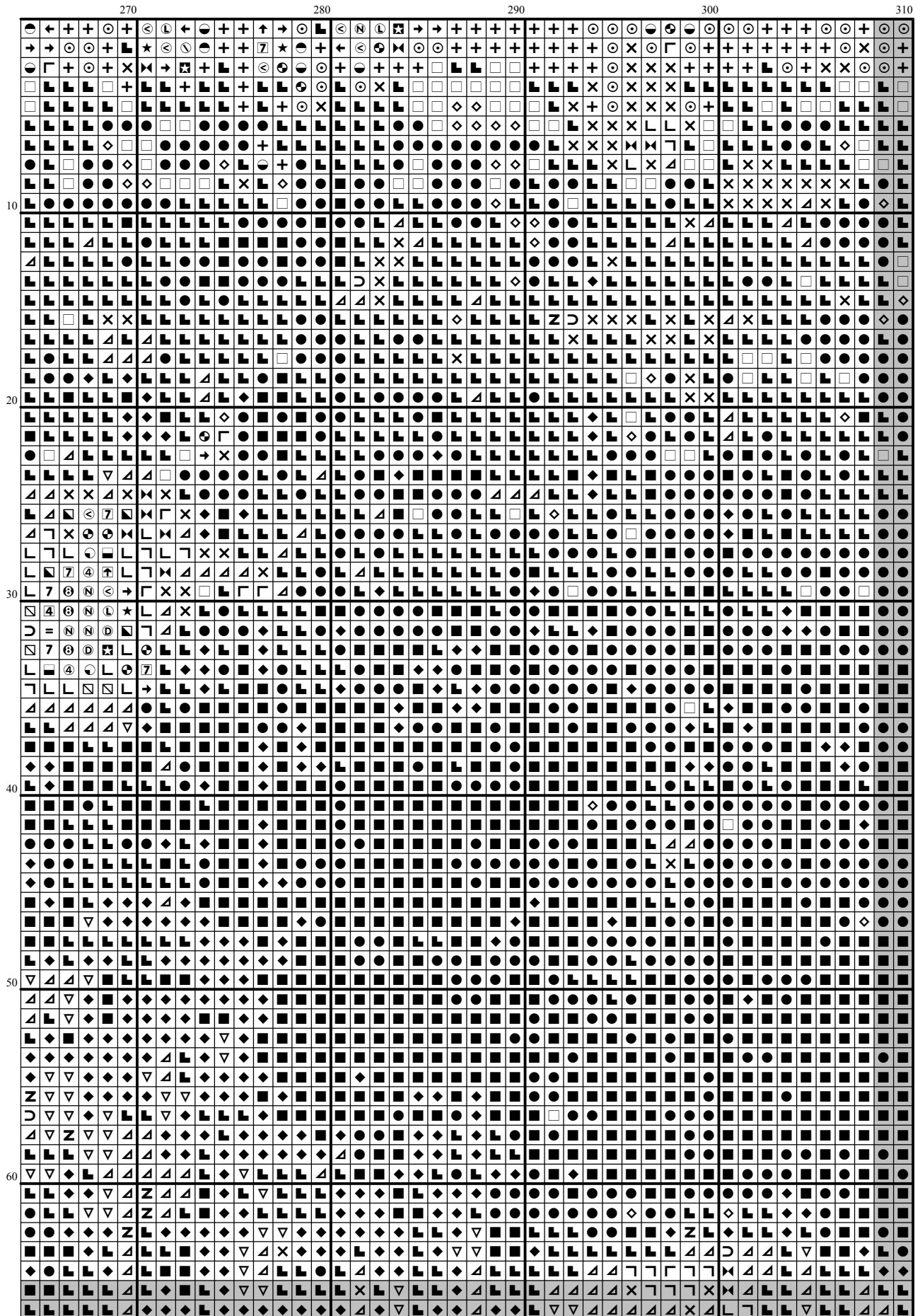
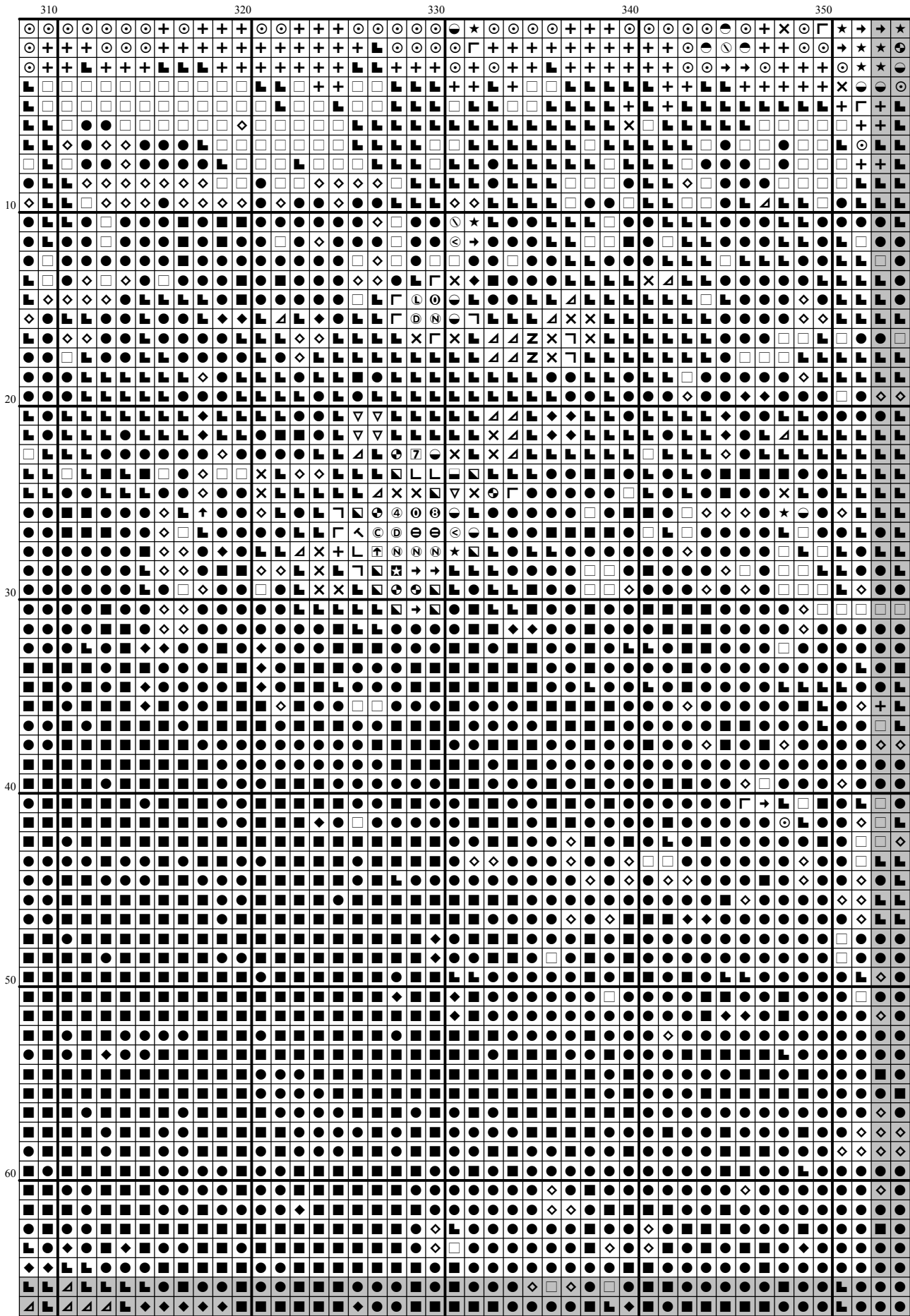


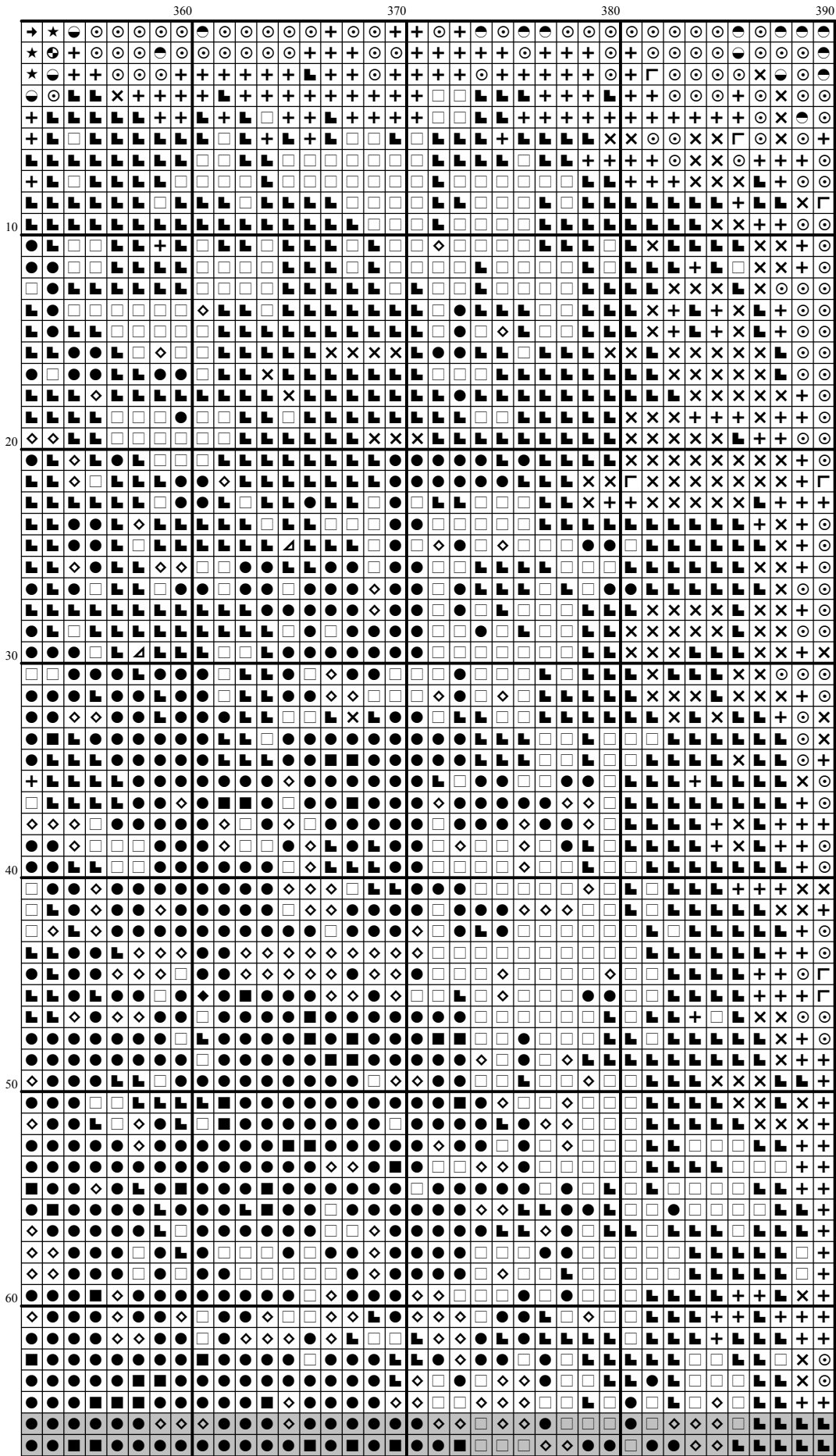
[illegible]

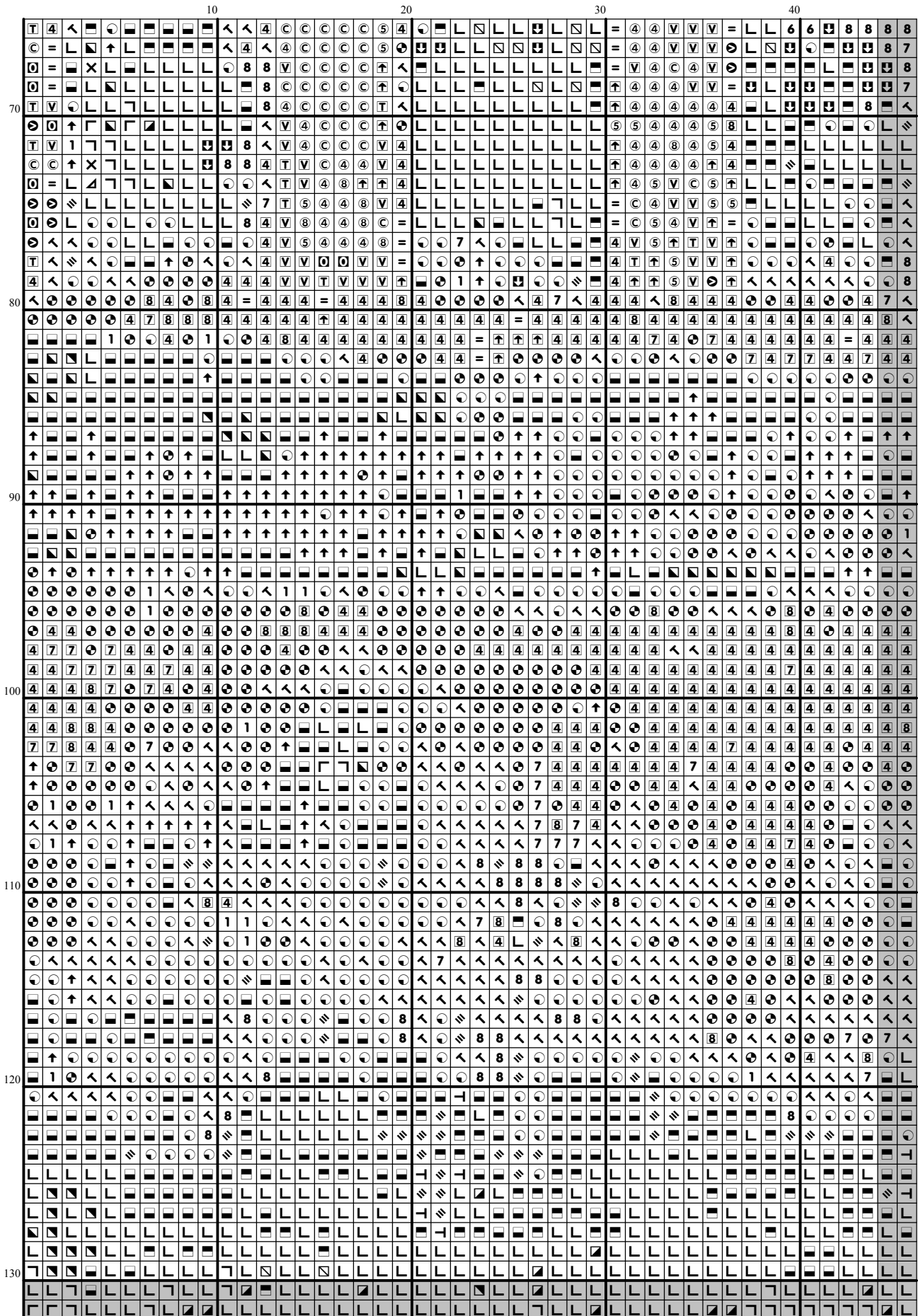


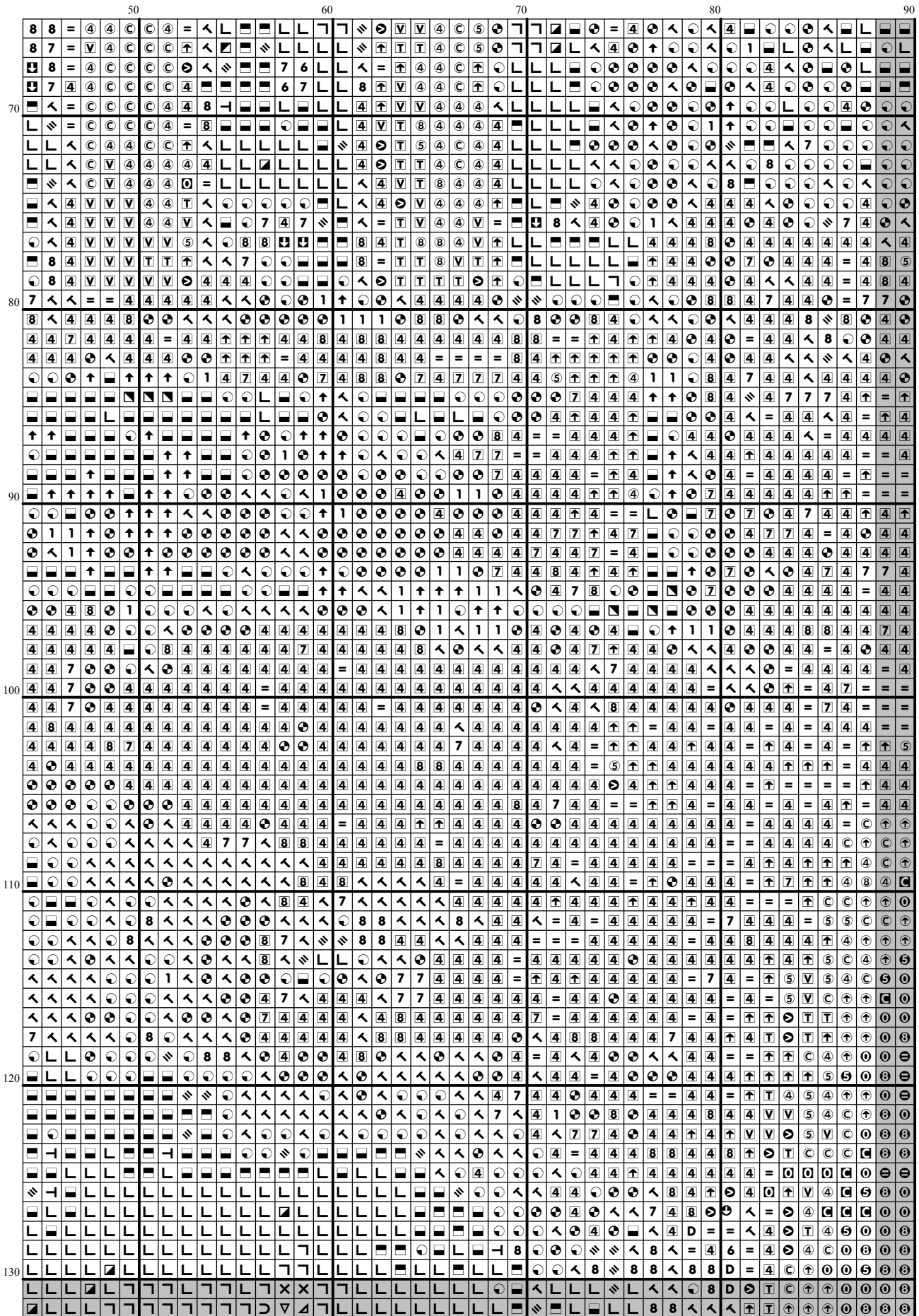


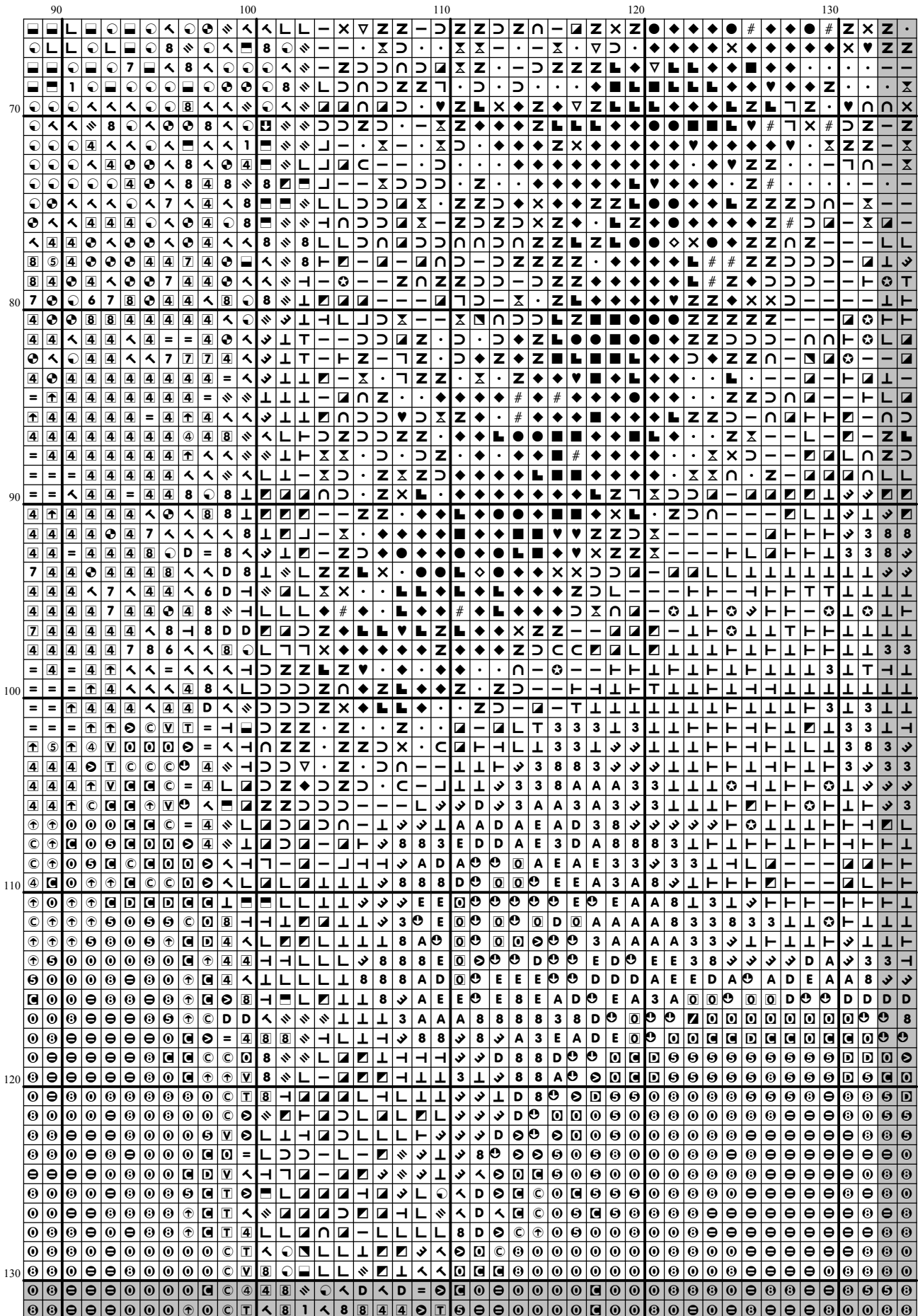


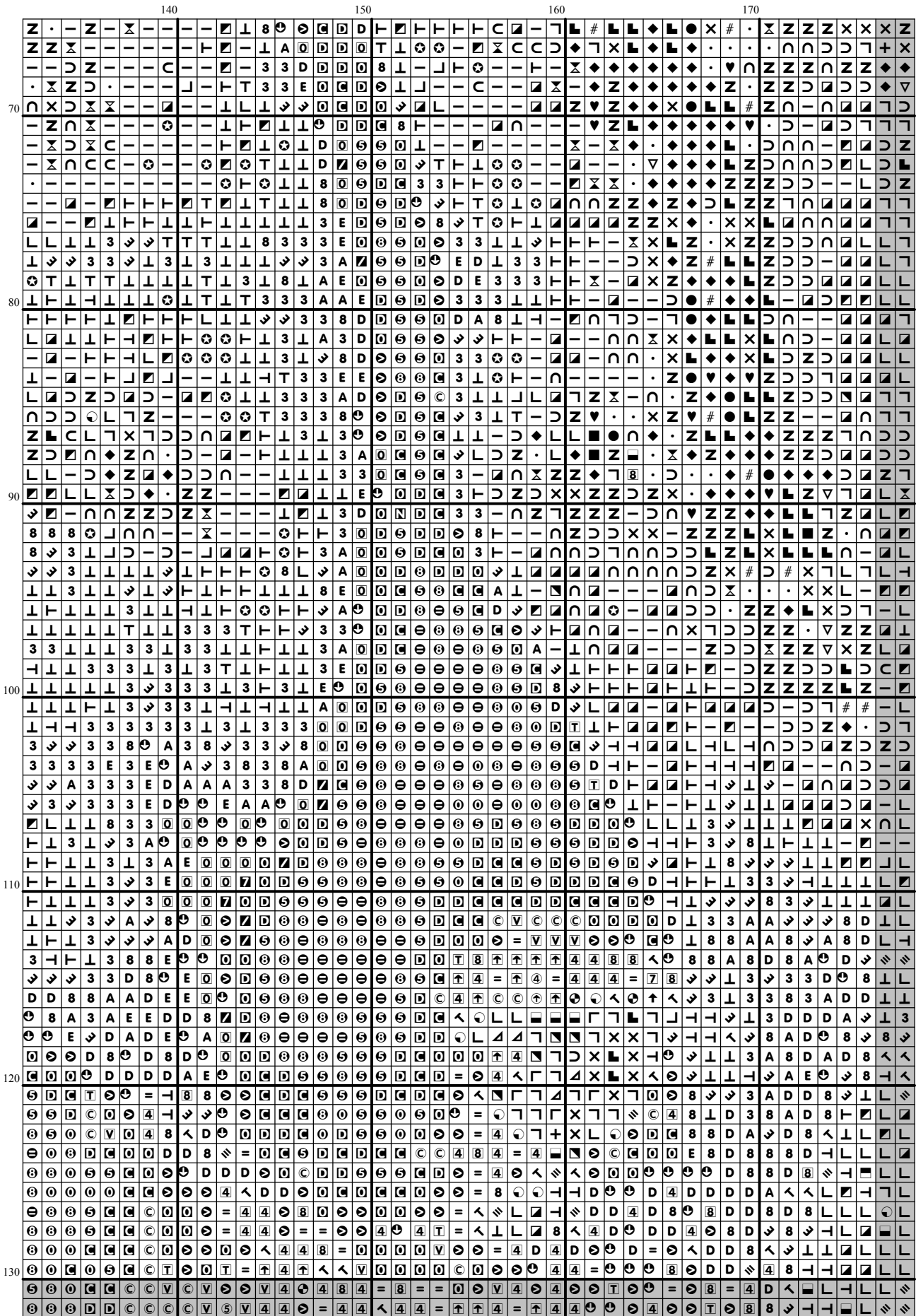


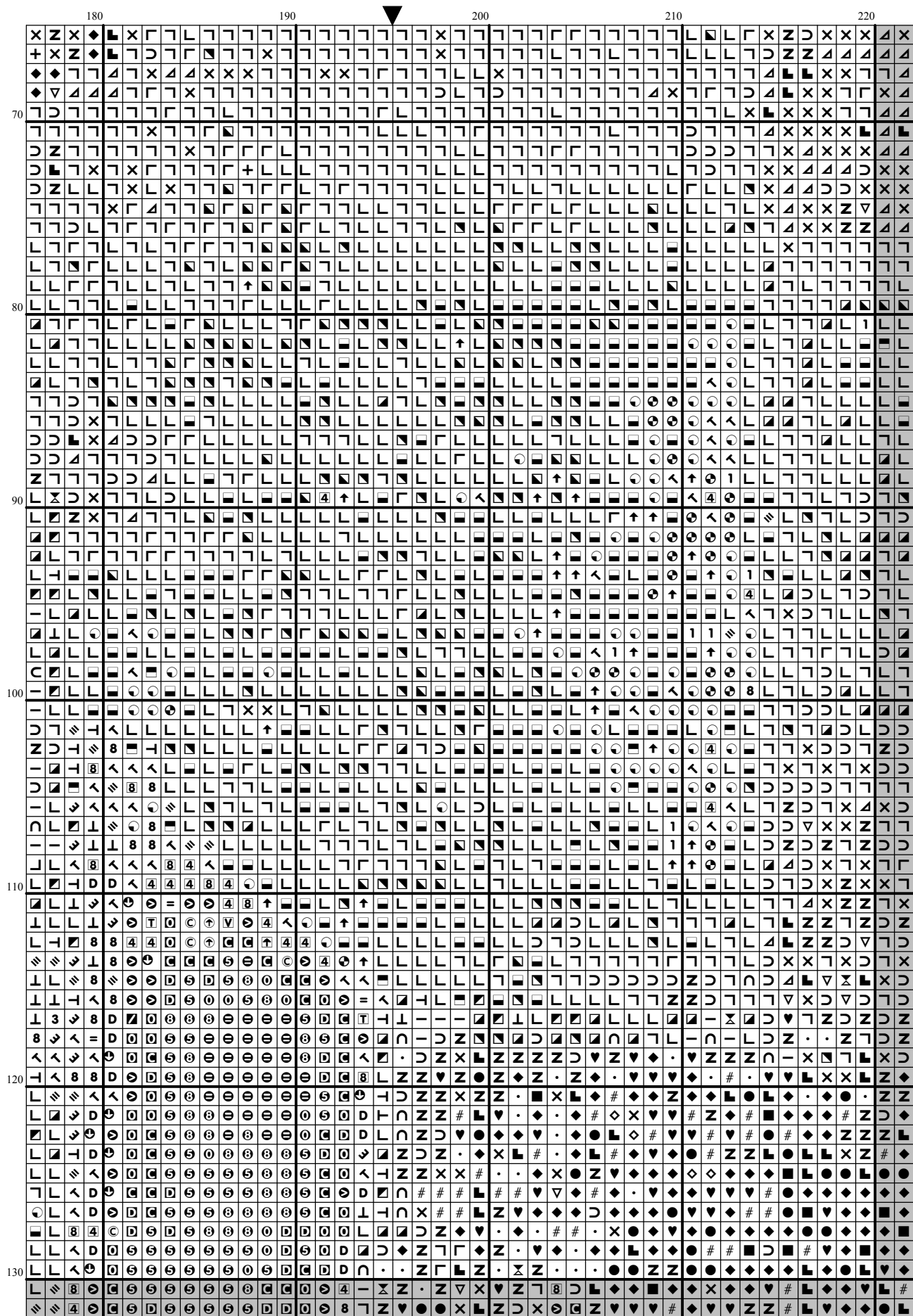




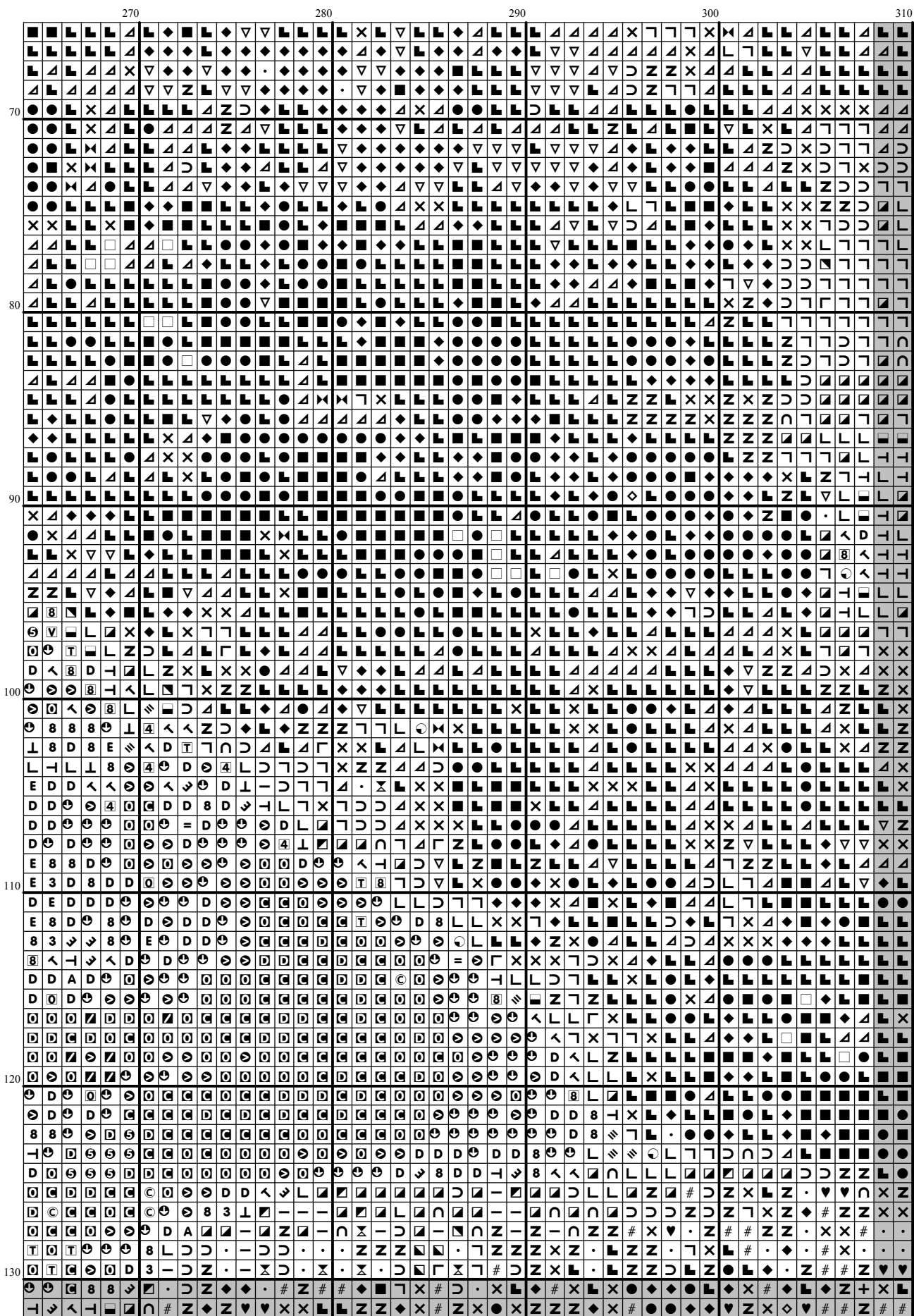


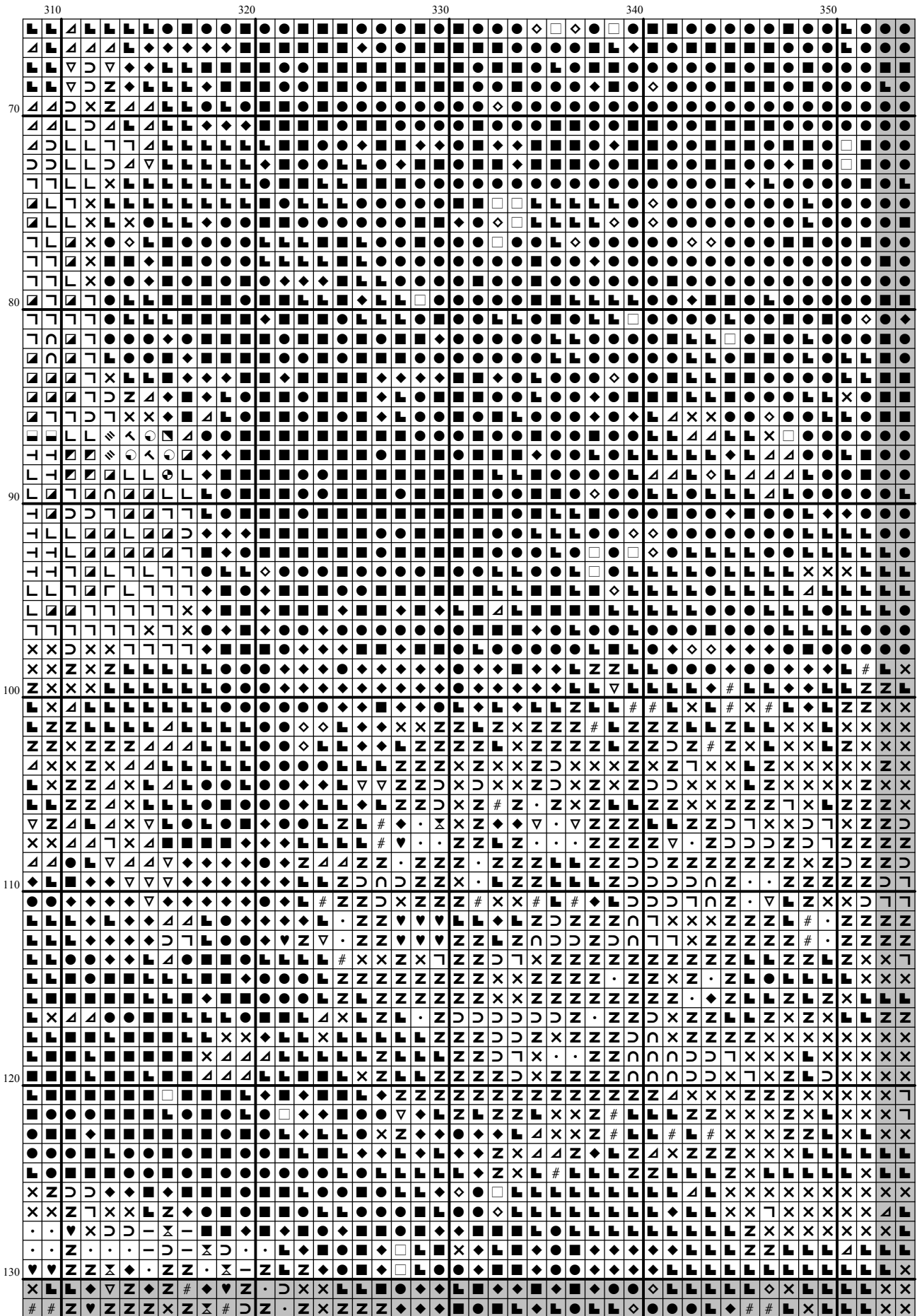


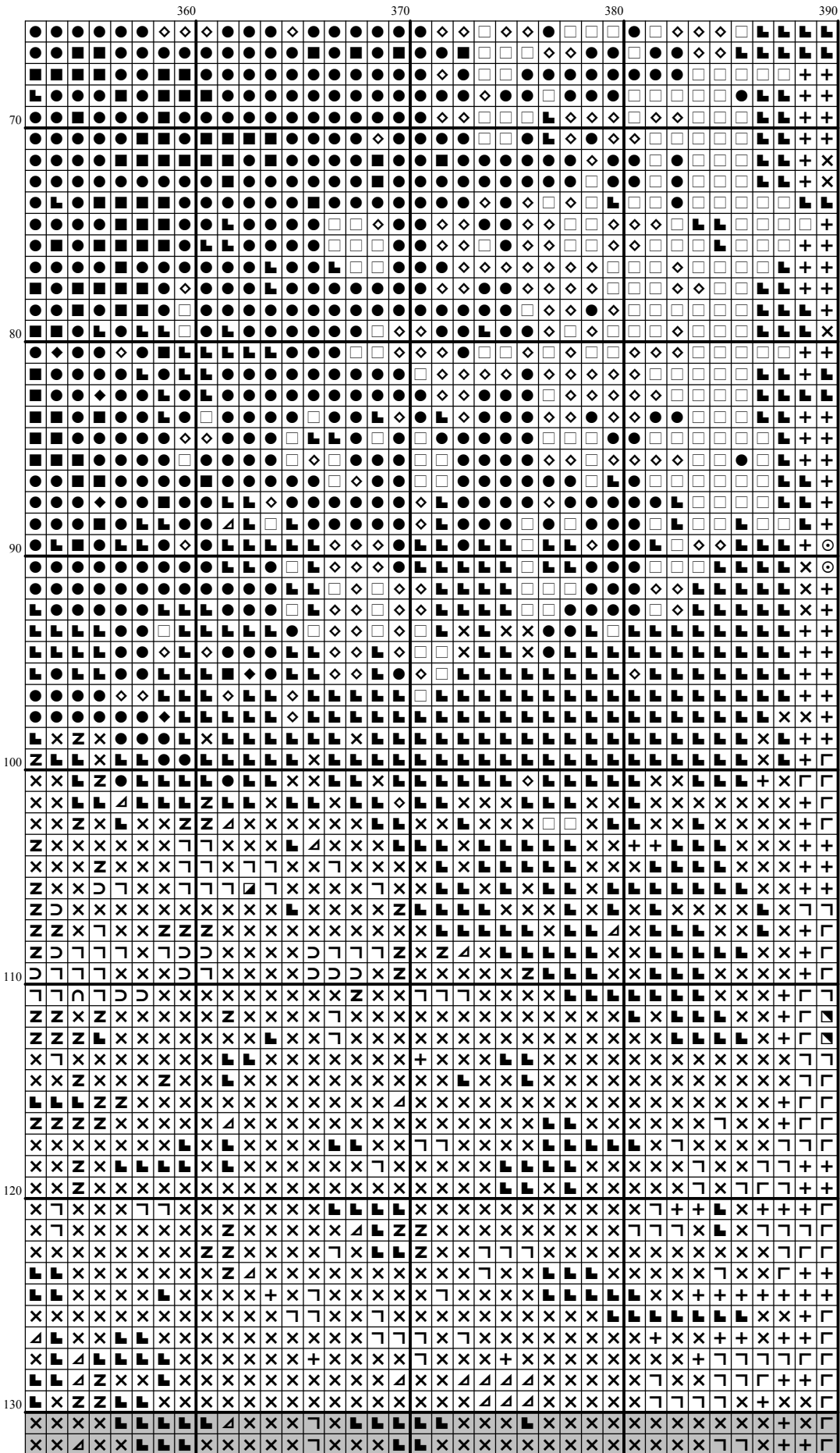


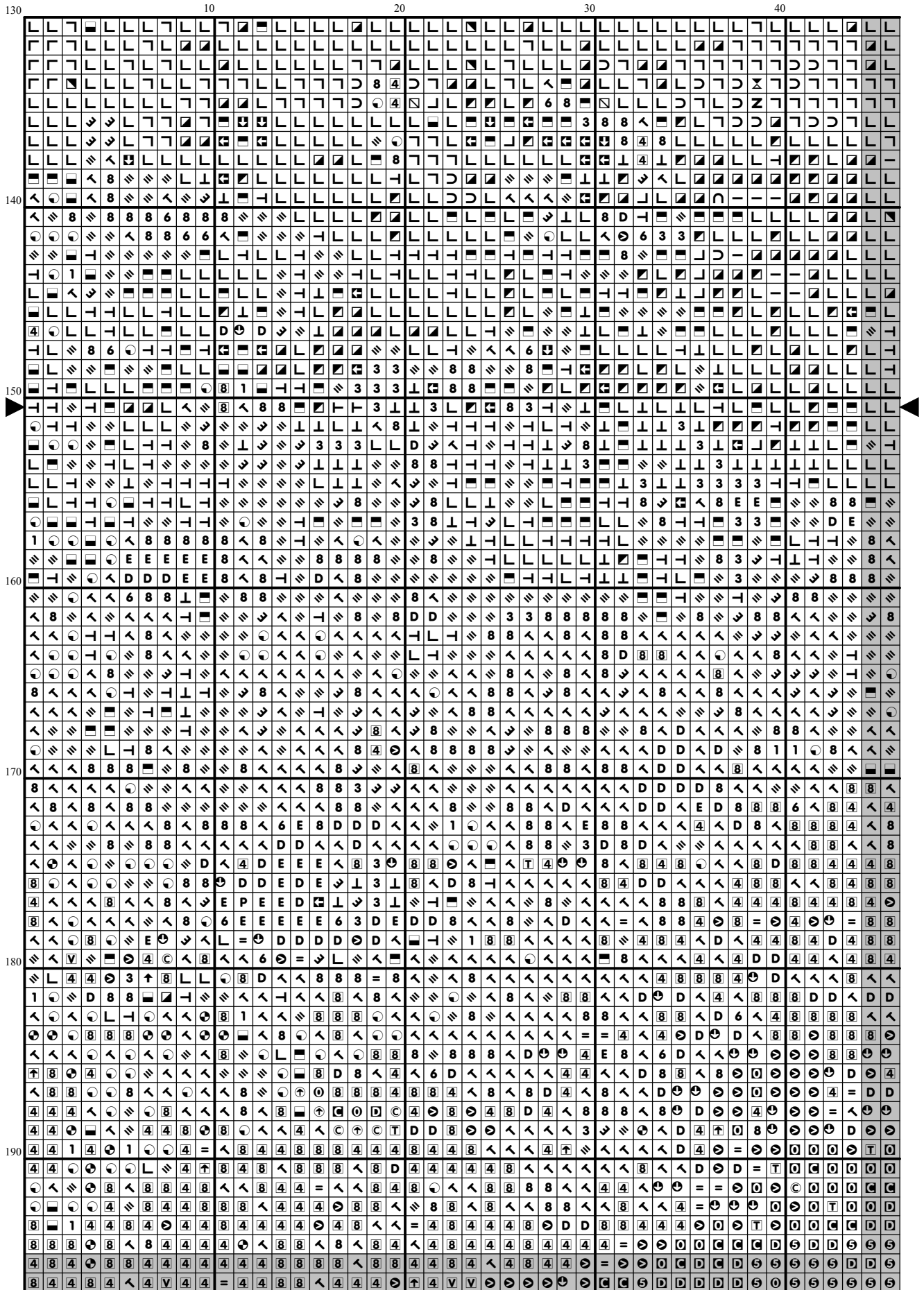


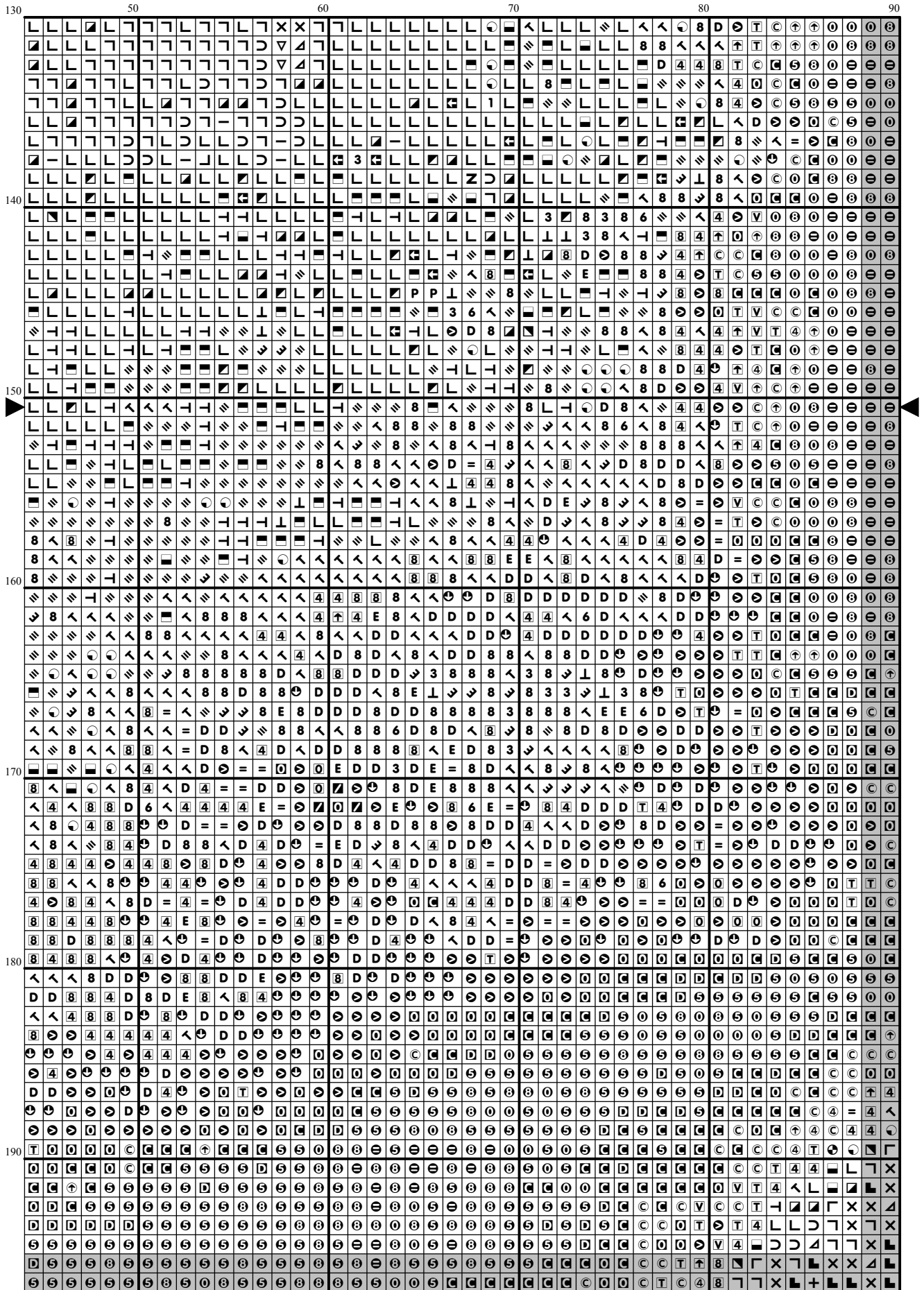
[illegible]

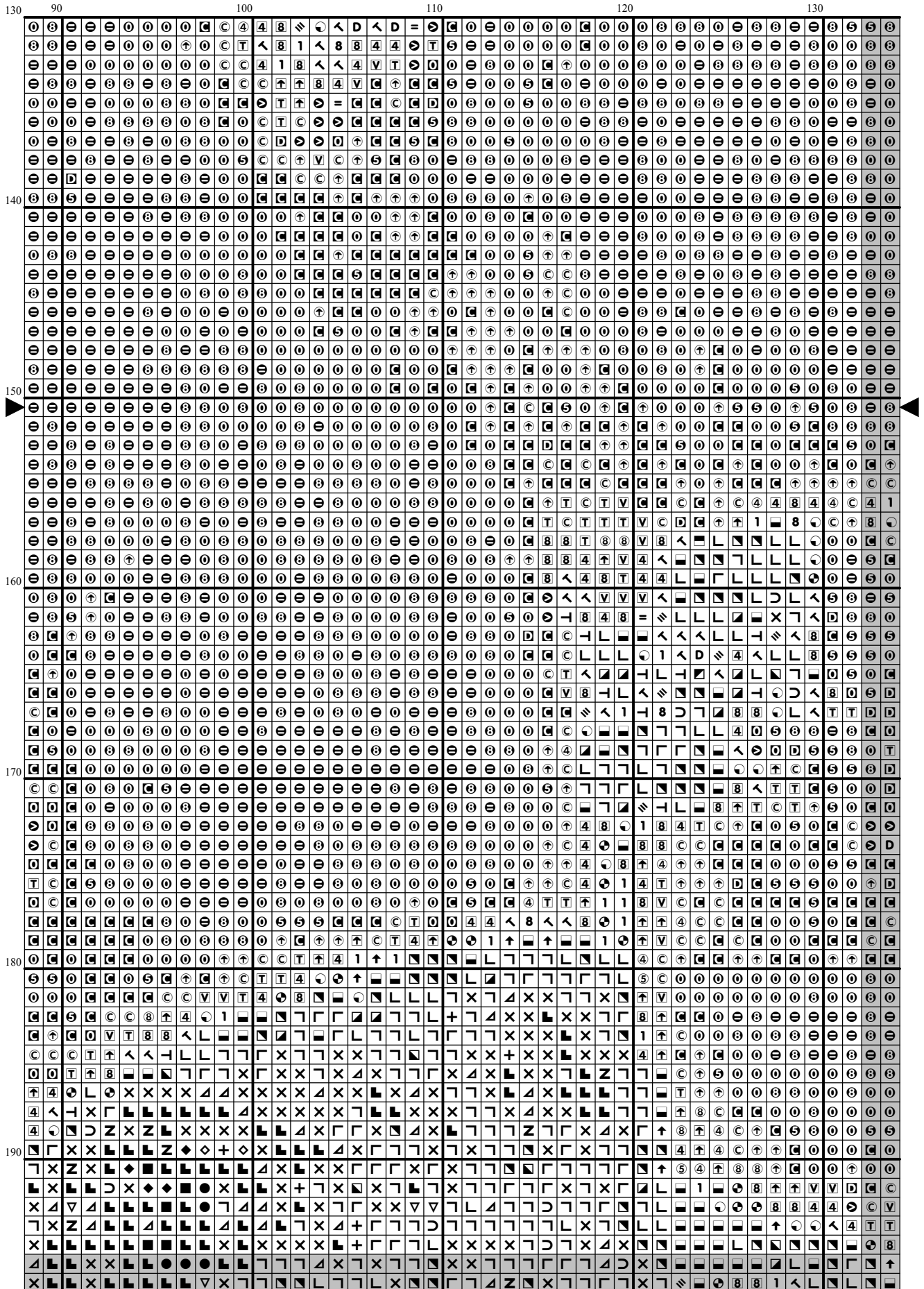


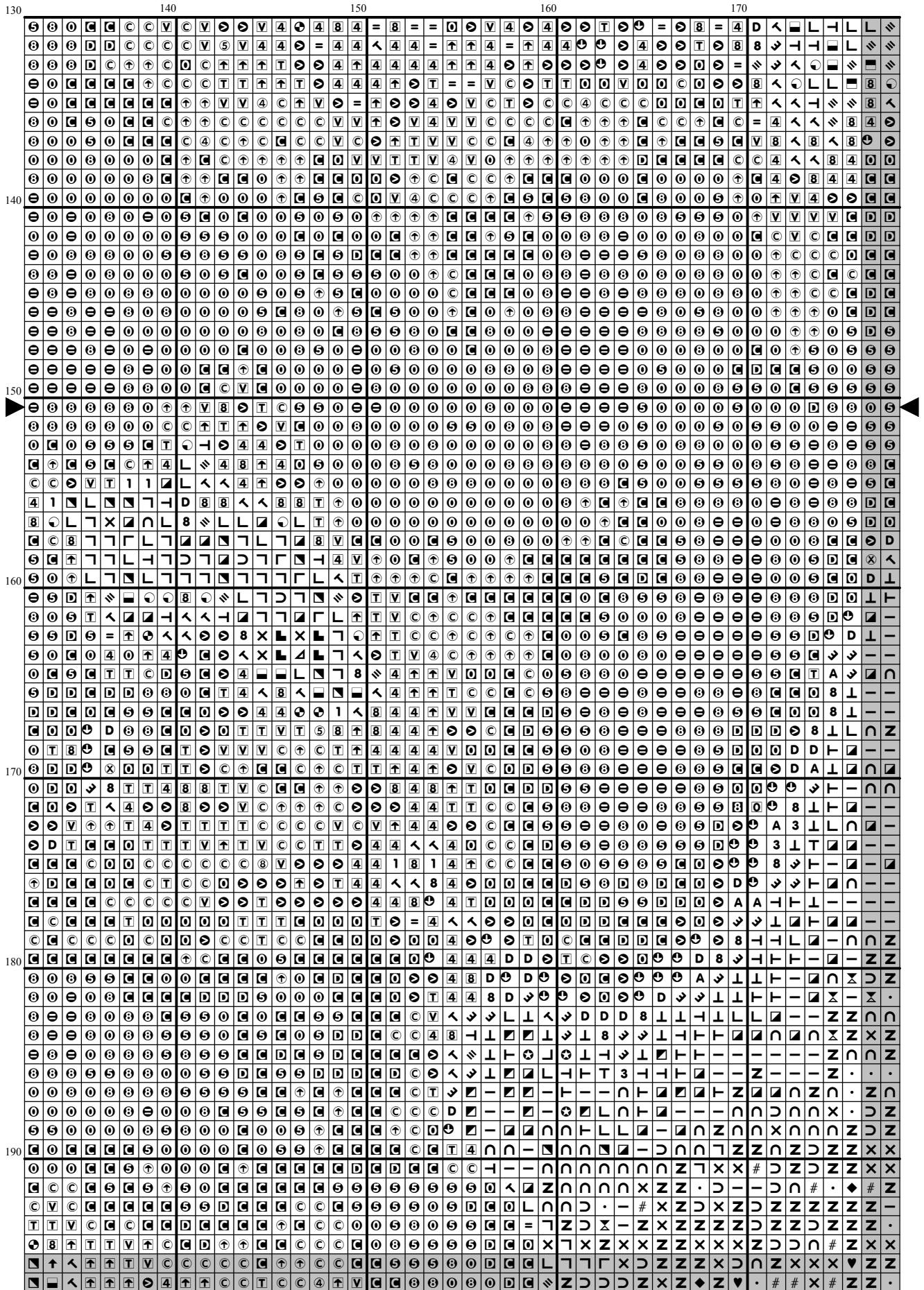


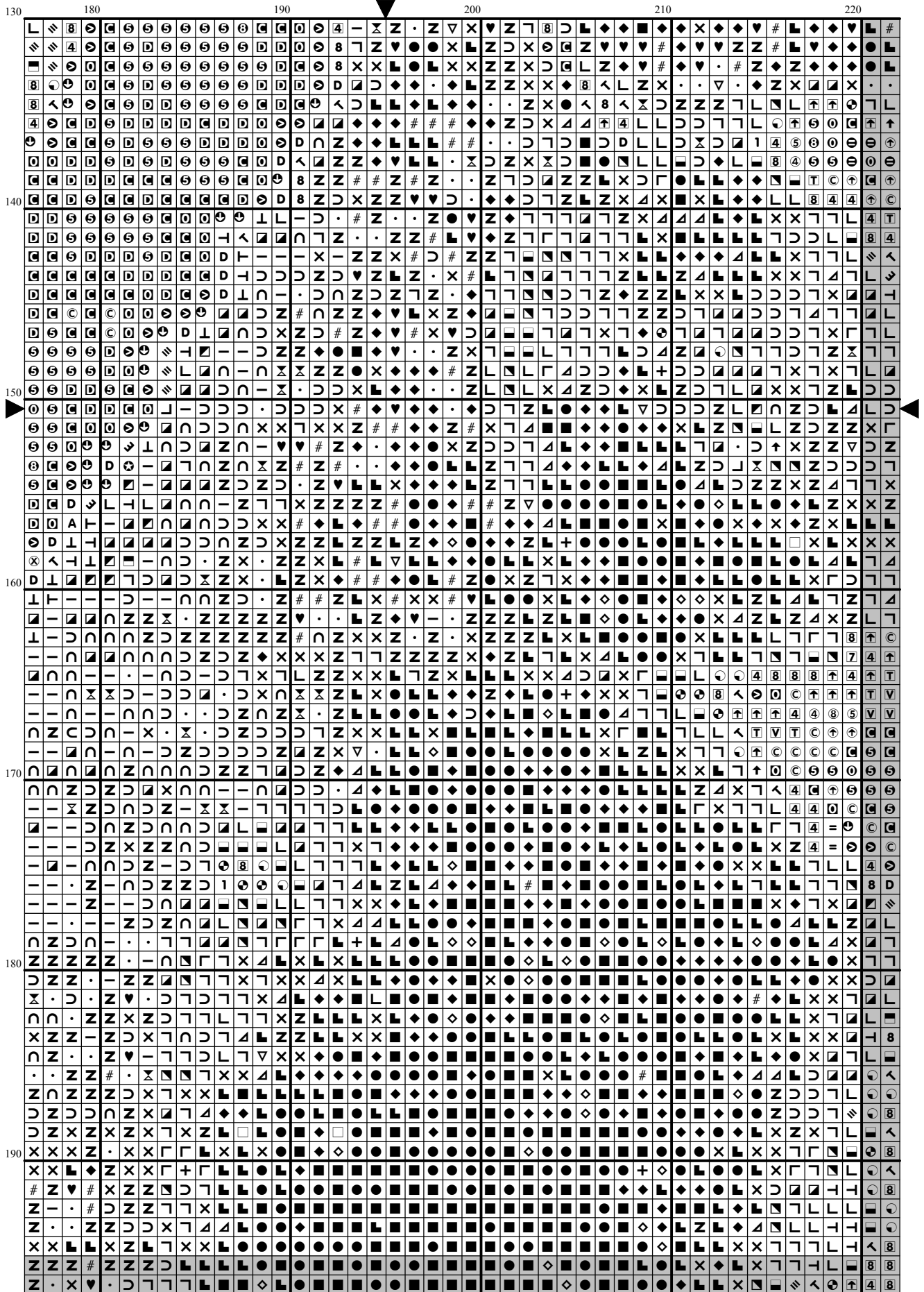




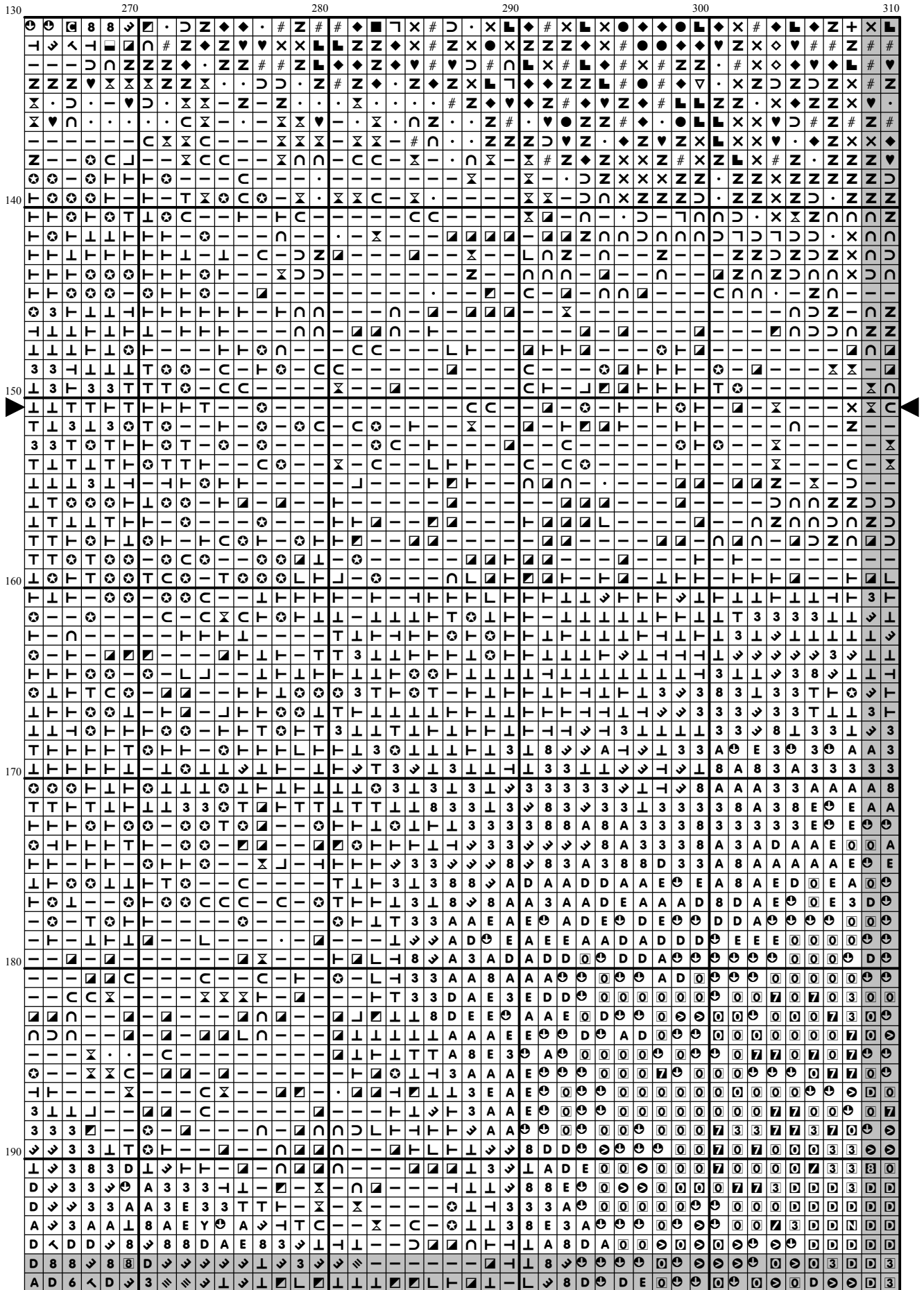


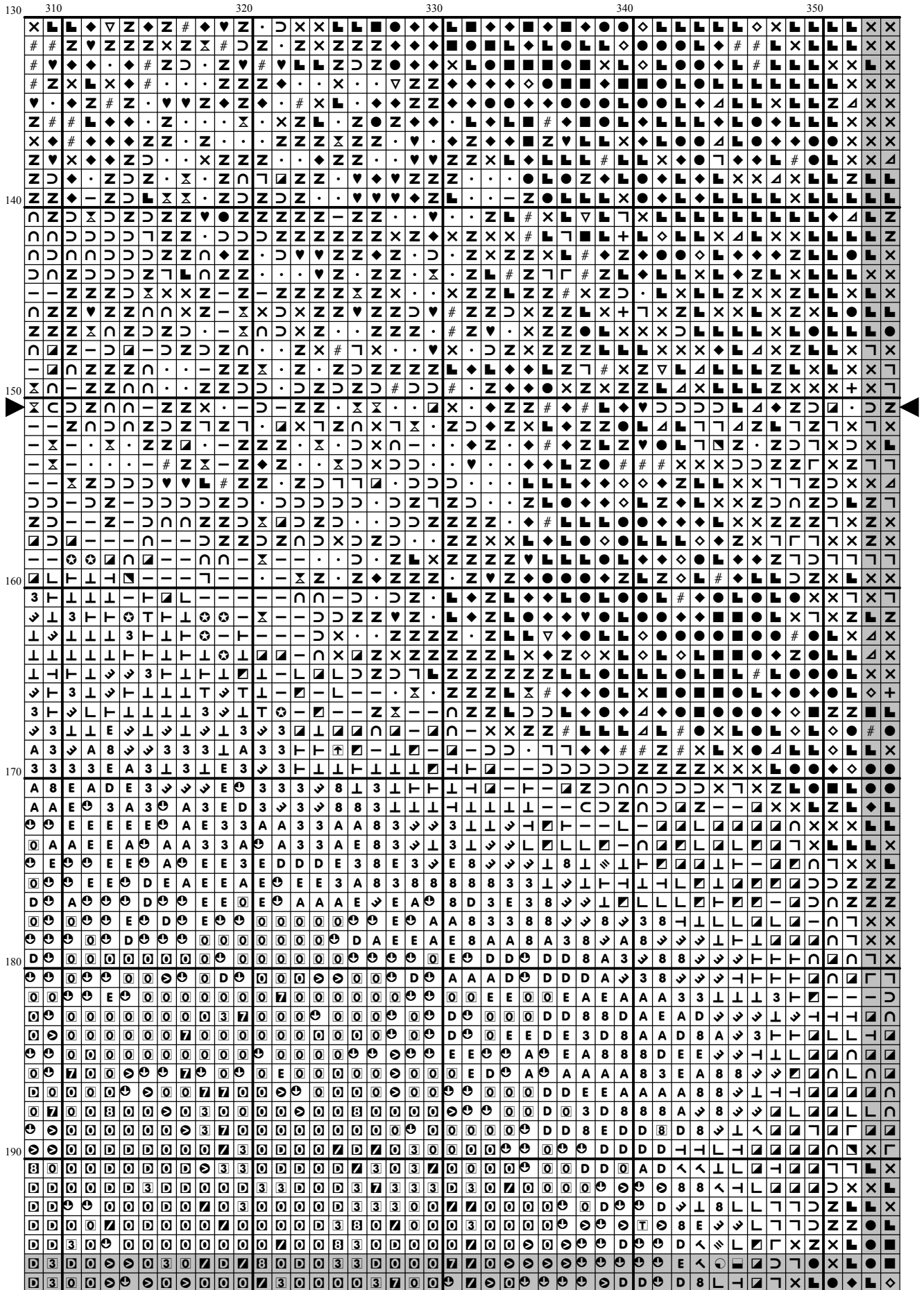




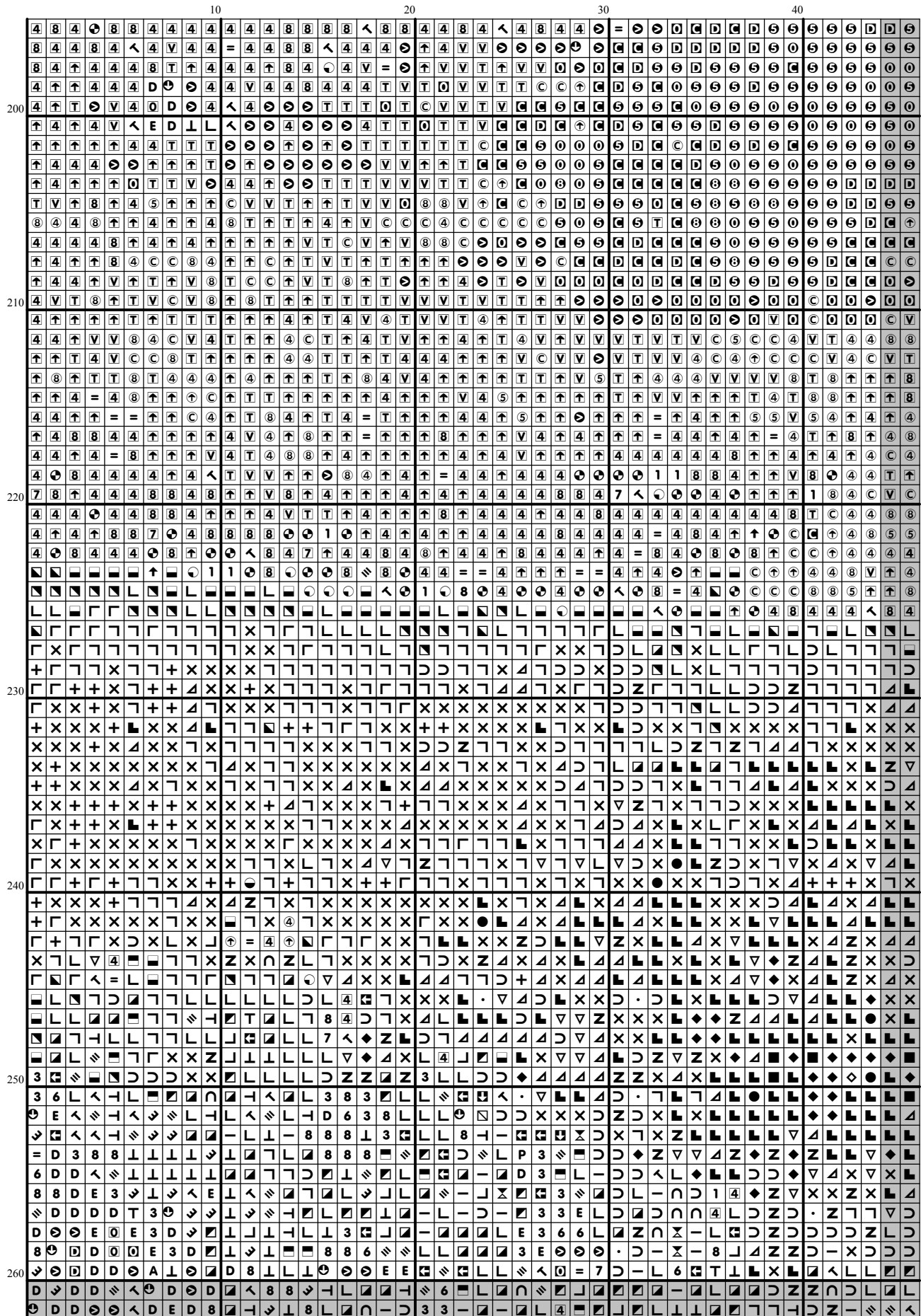


[illegible]



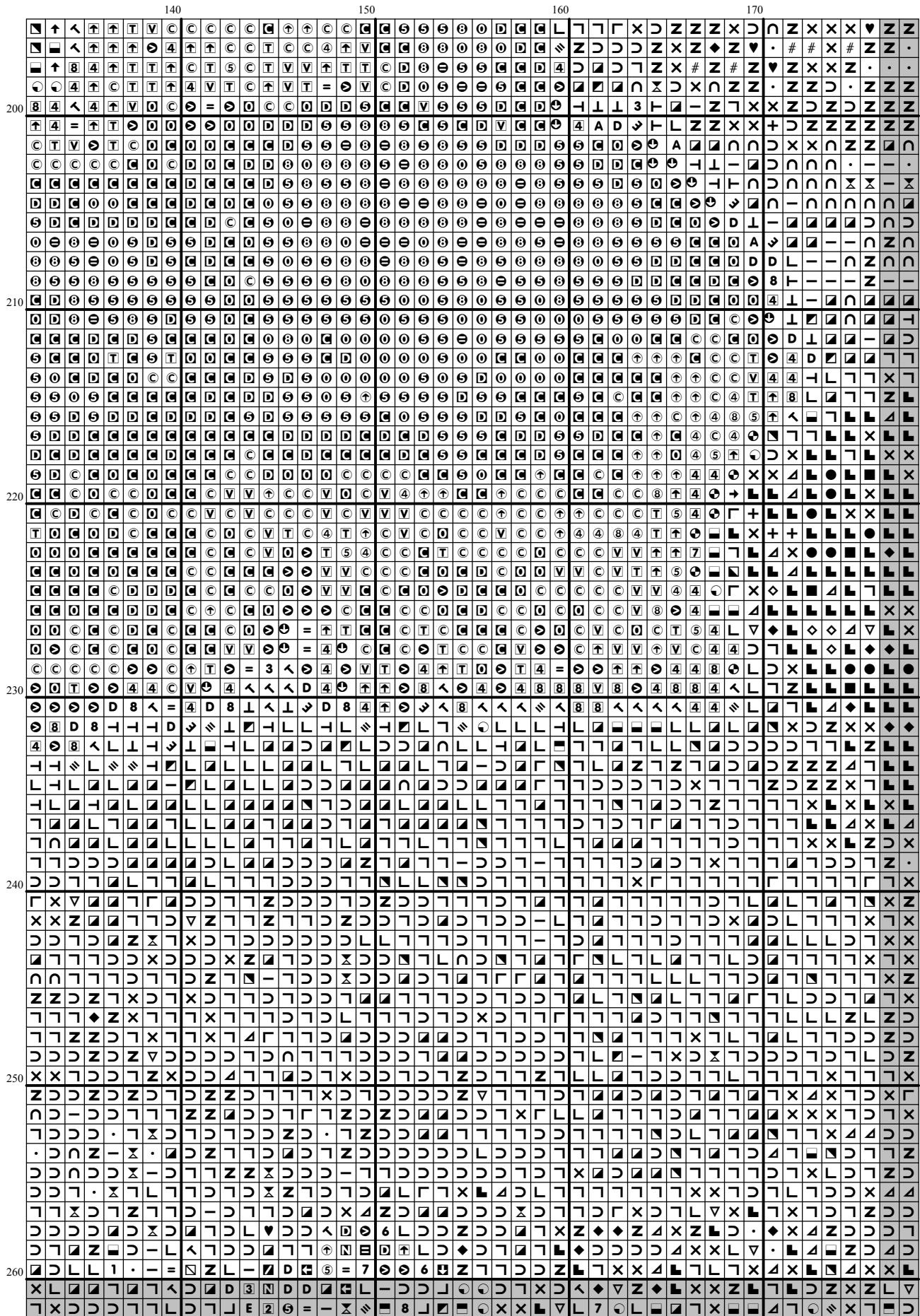


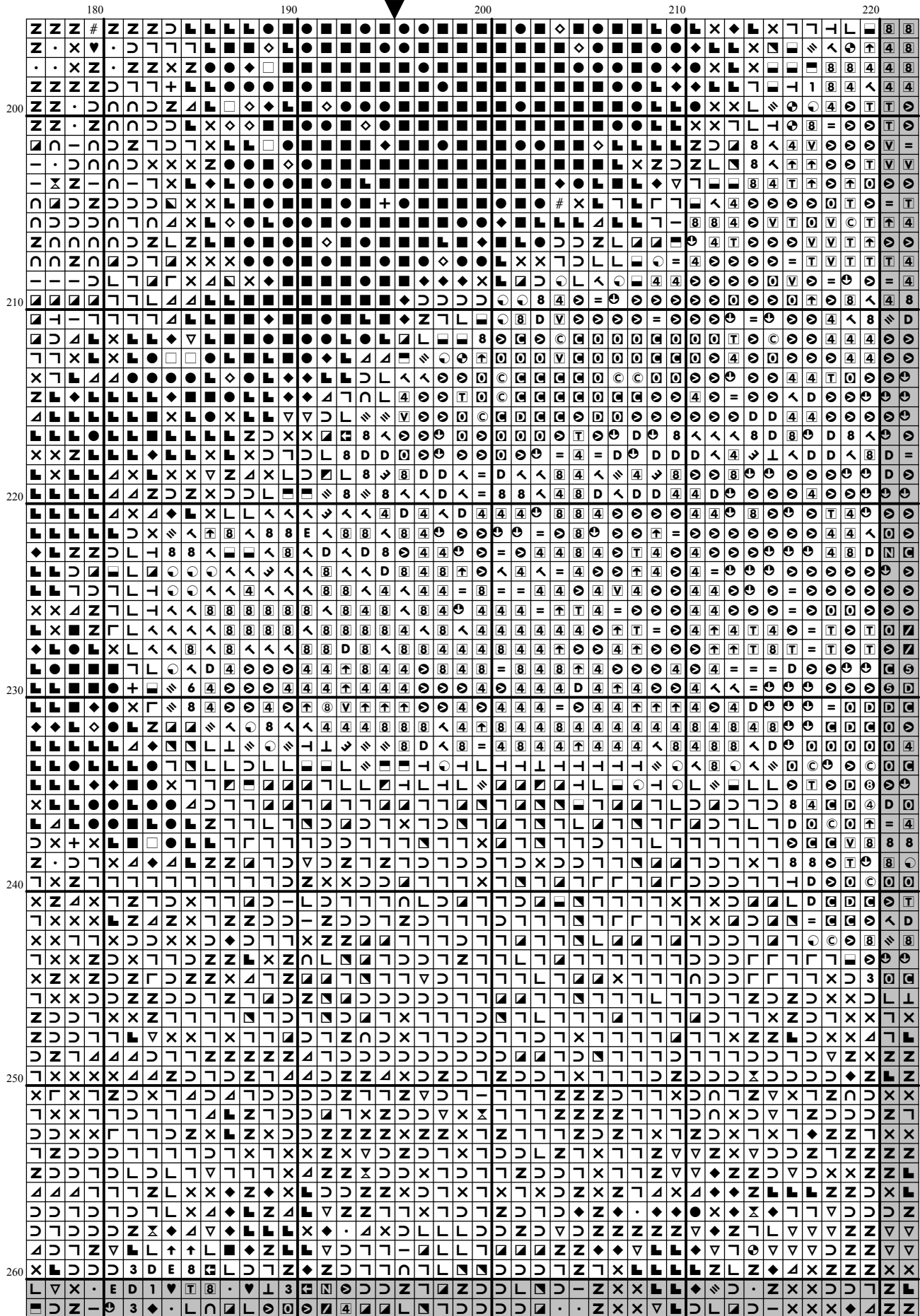
[illegible]



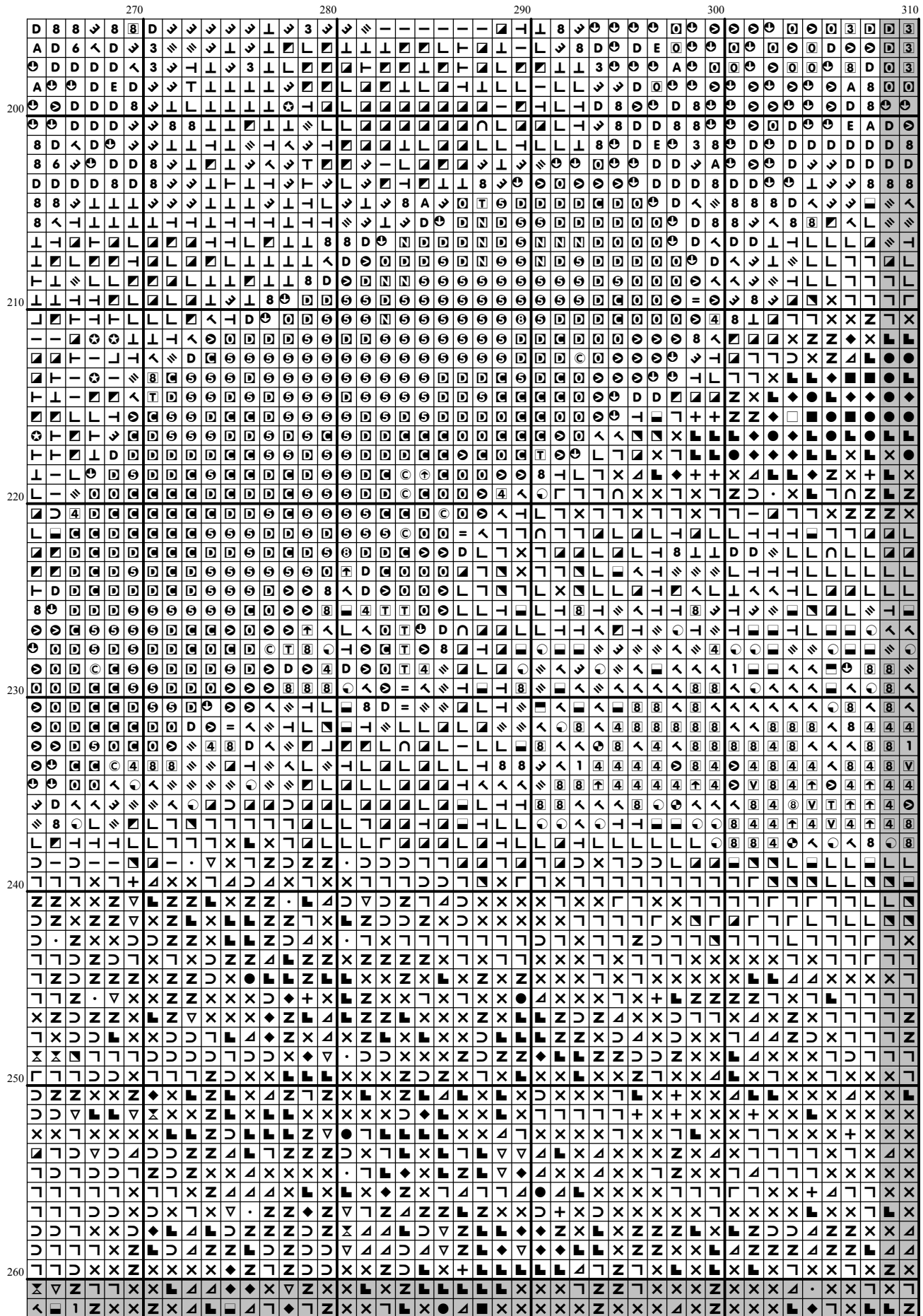
260

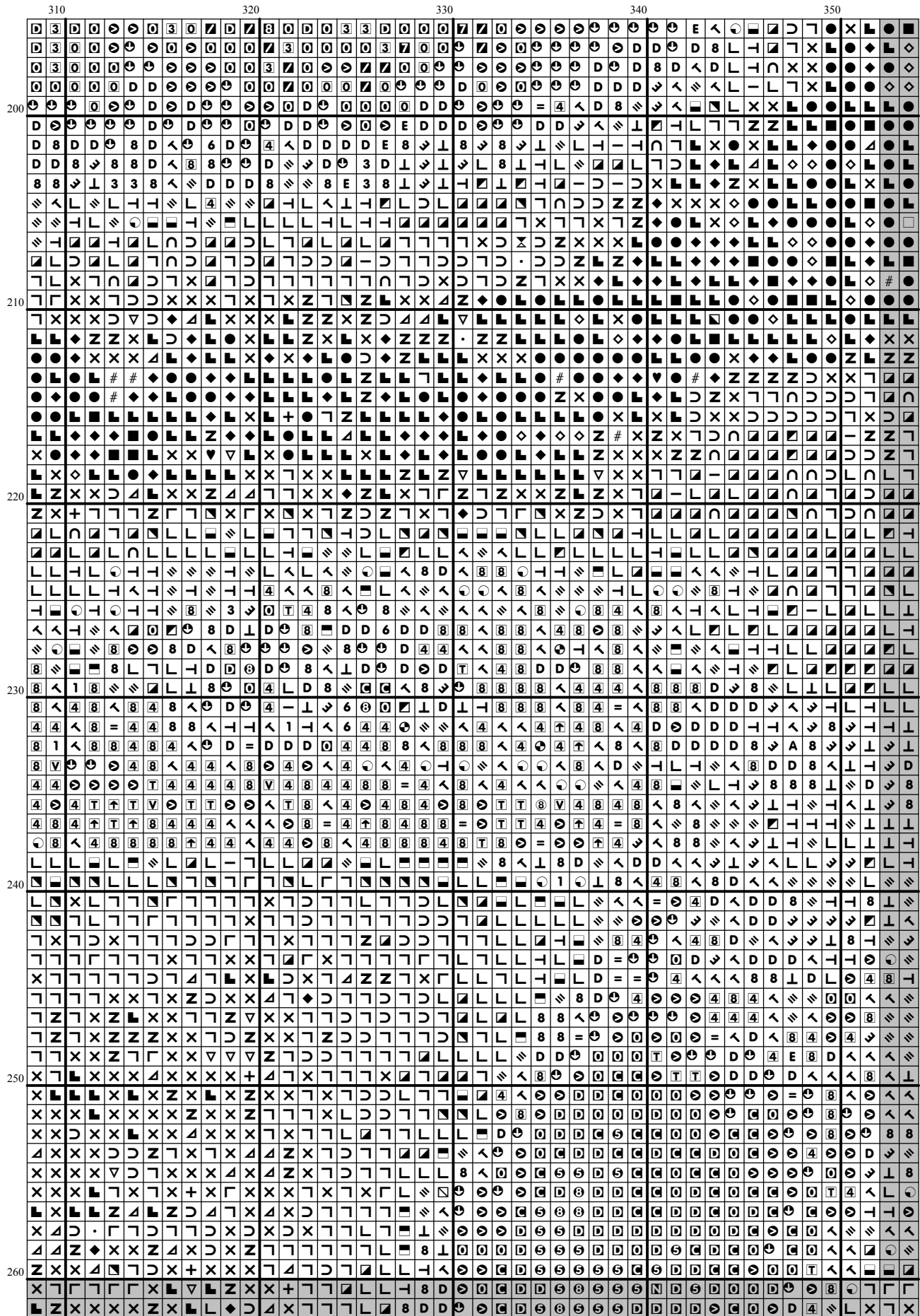
[illegible]

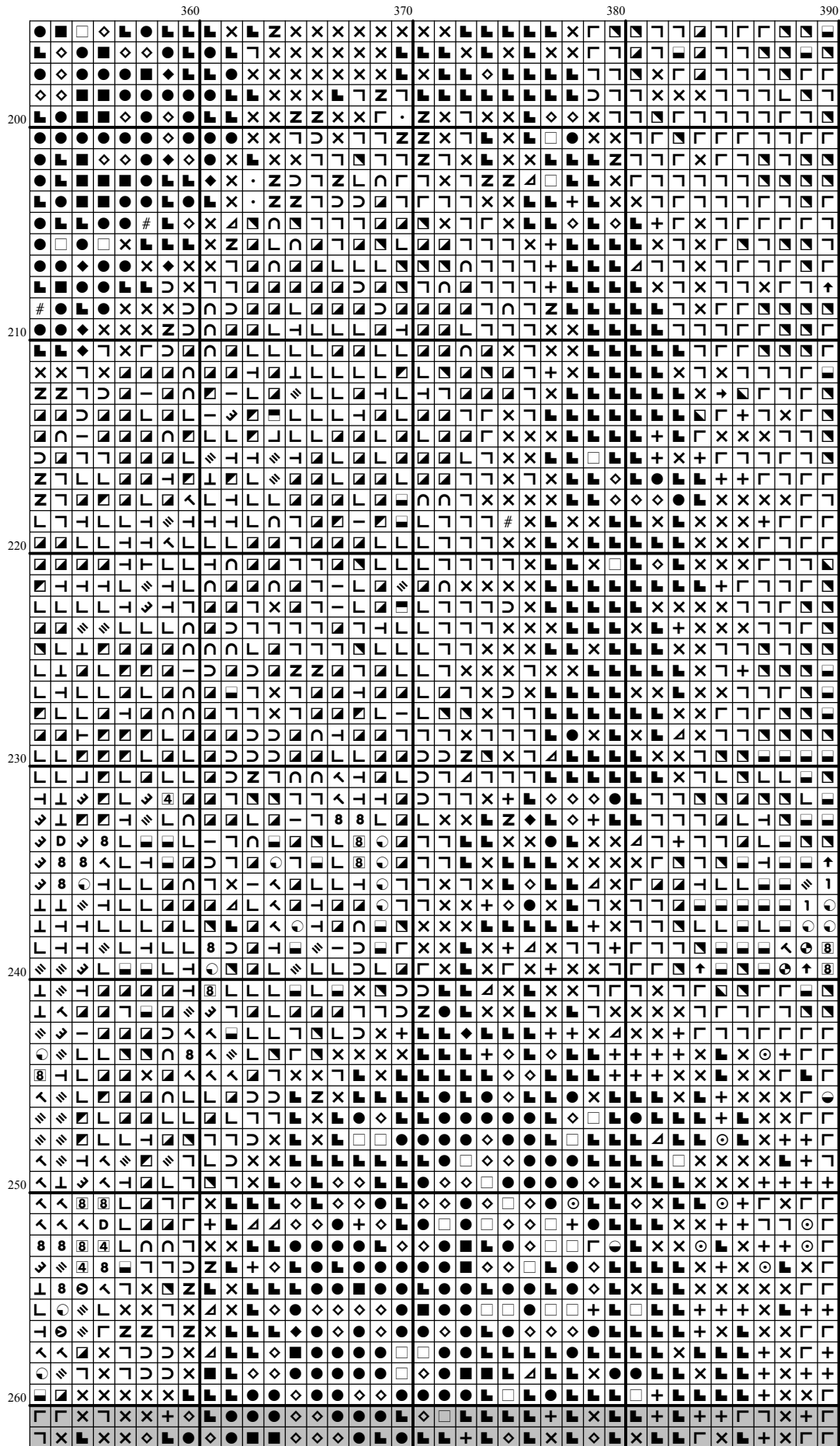




[illegible]

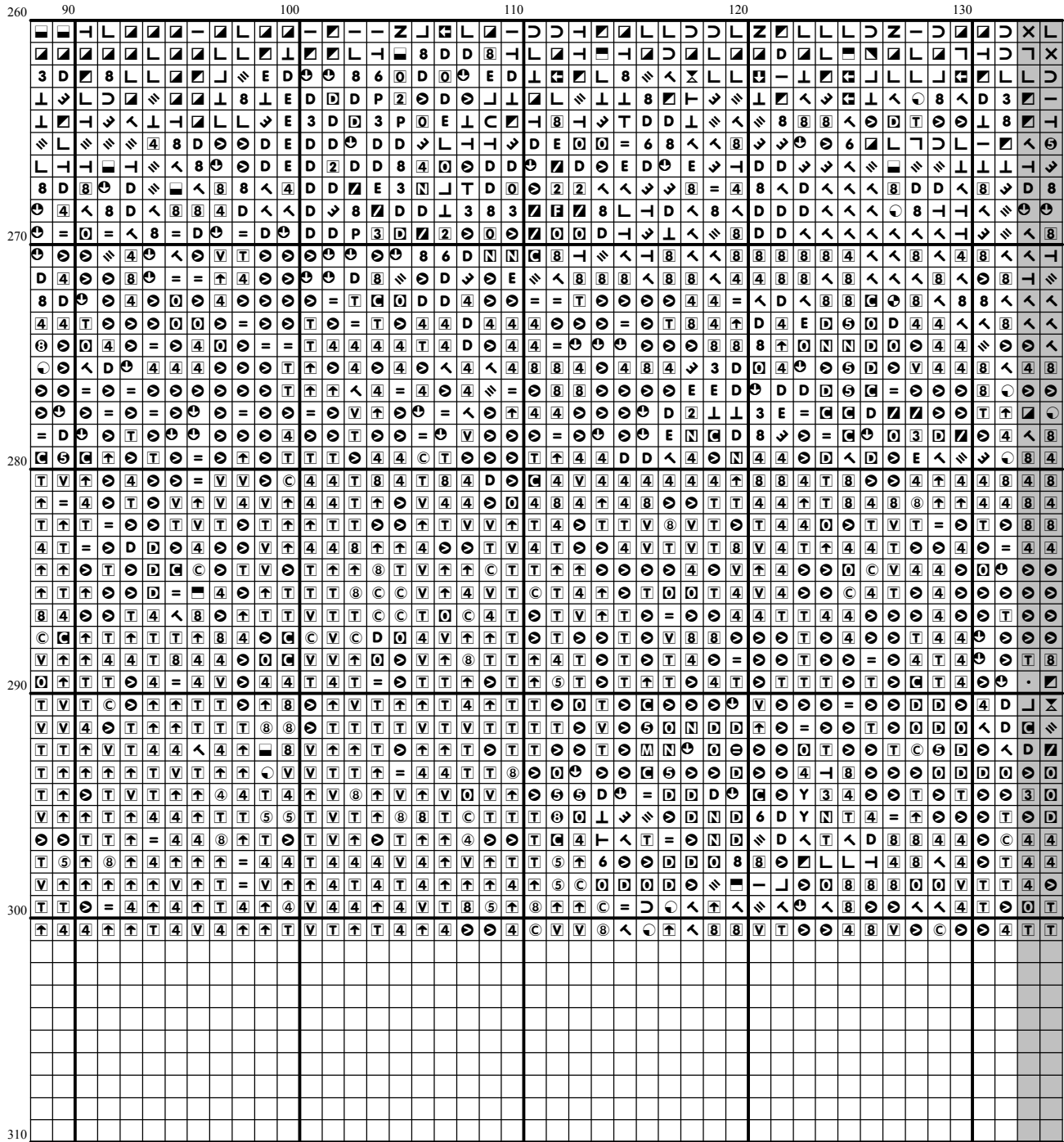


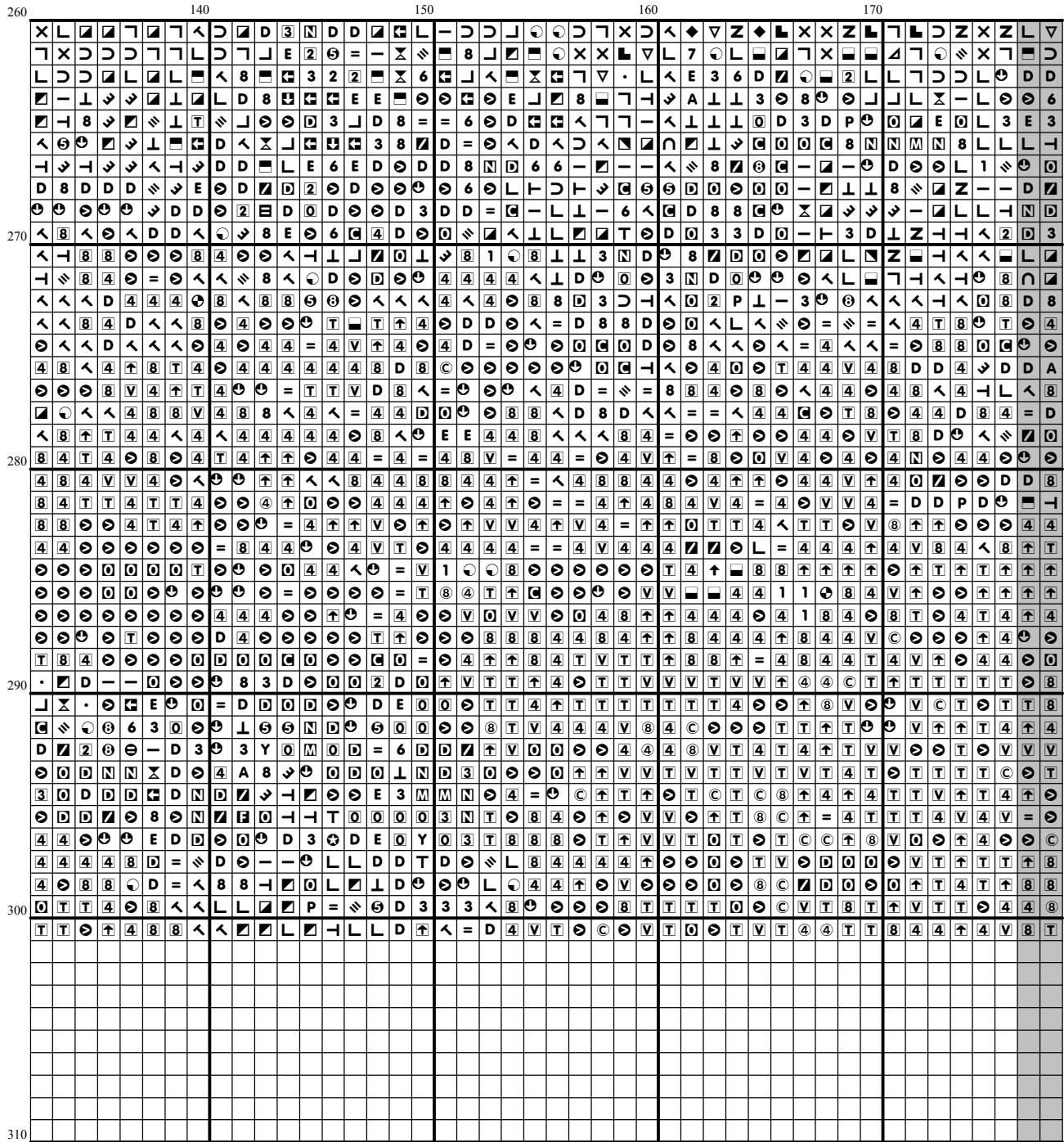


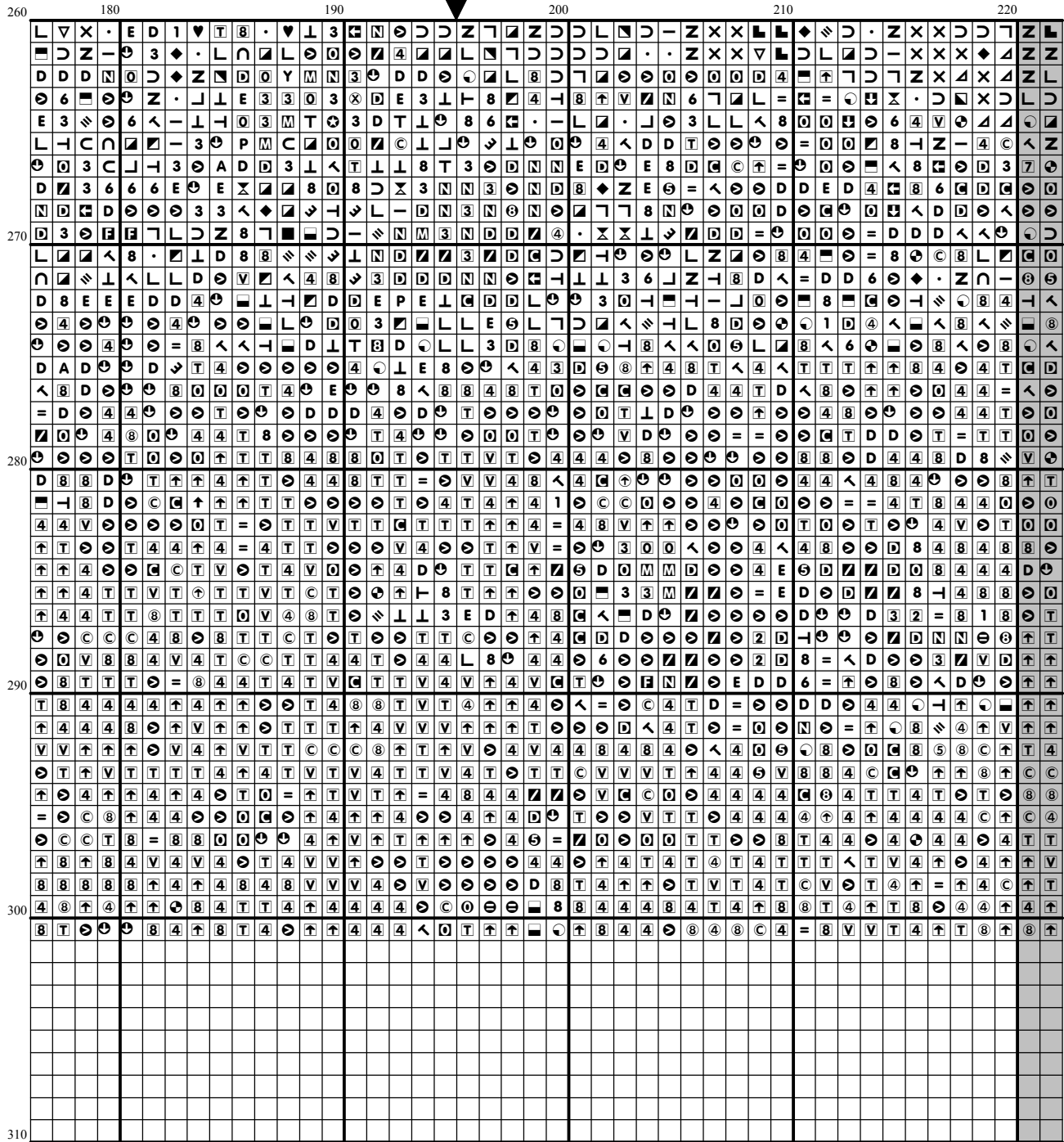


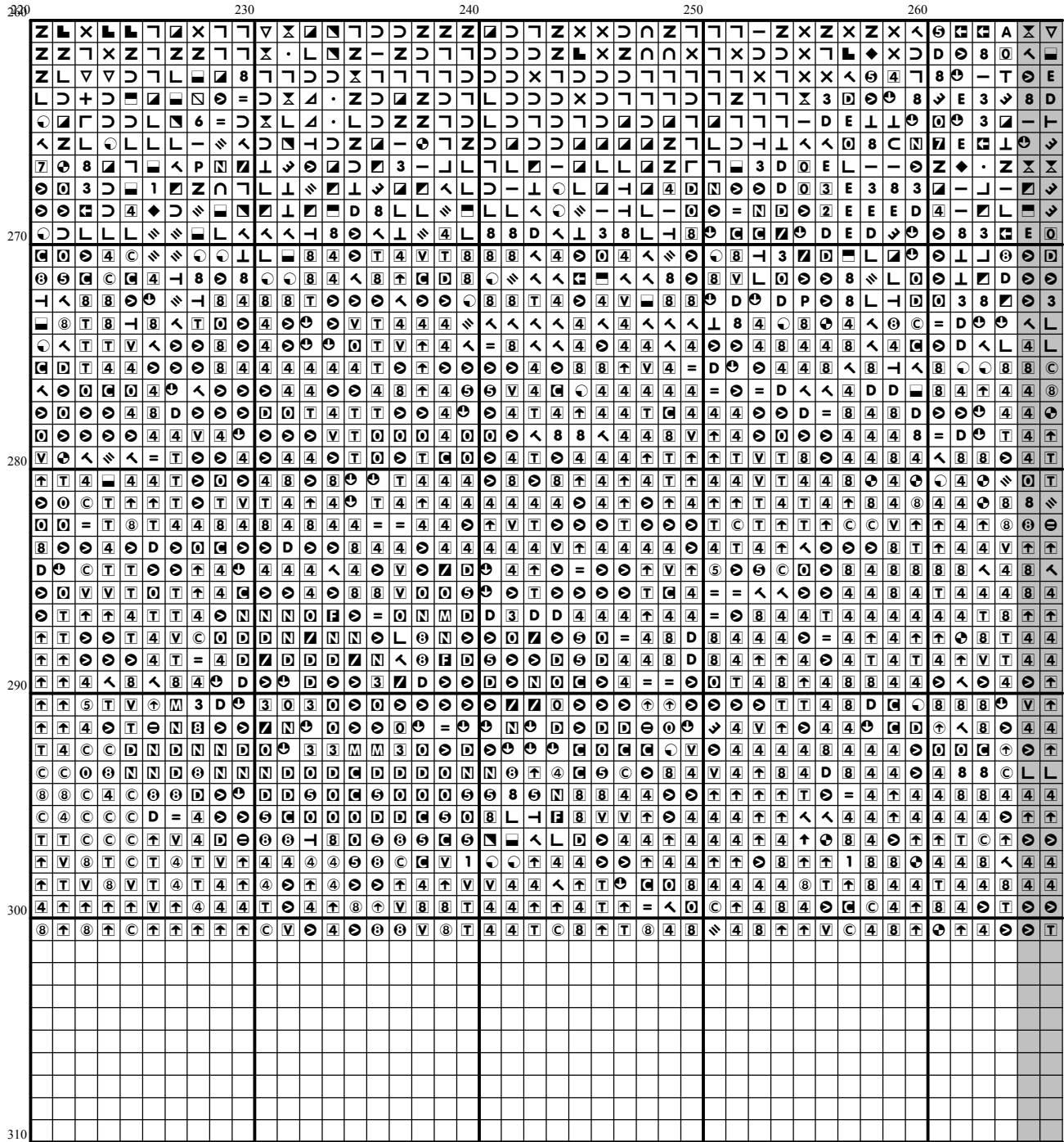
[illegible]

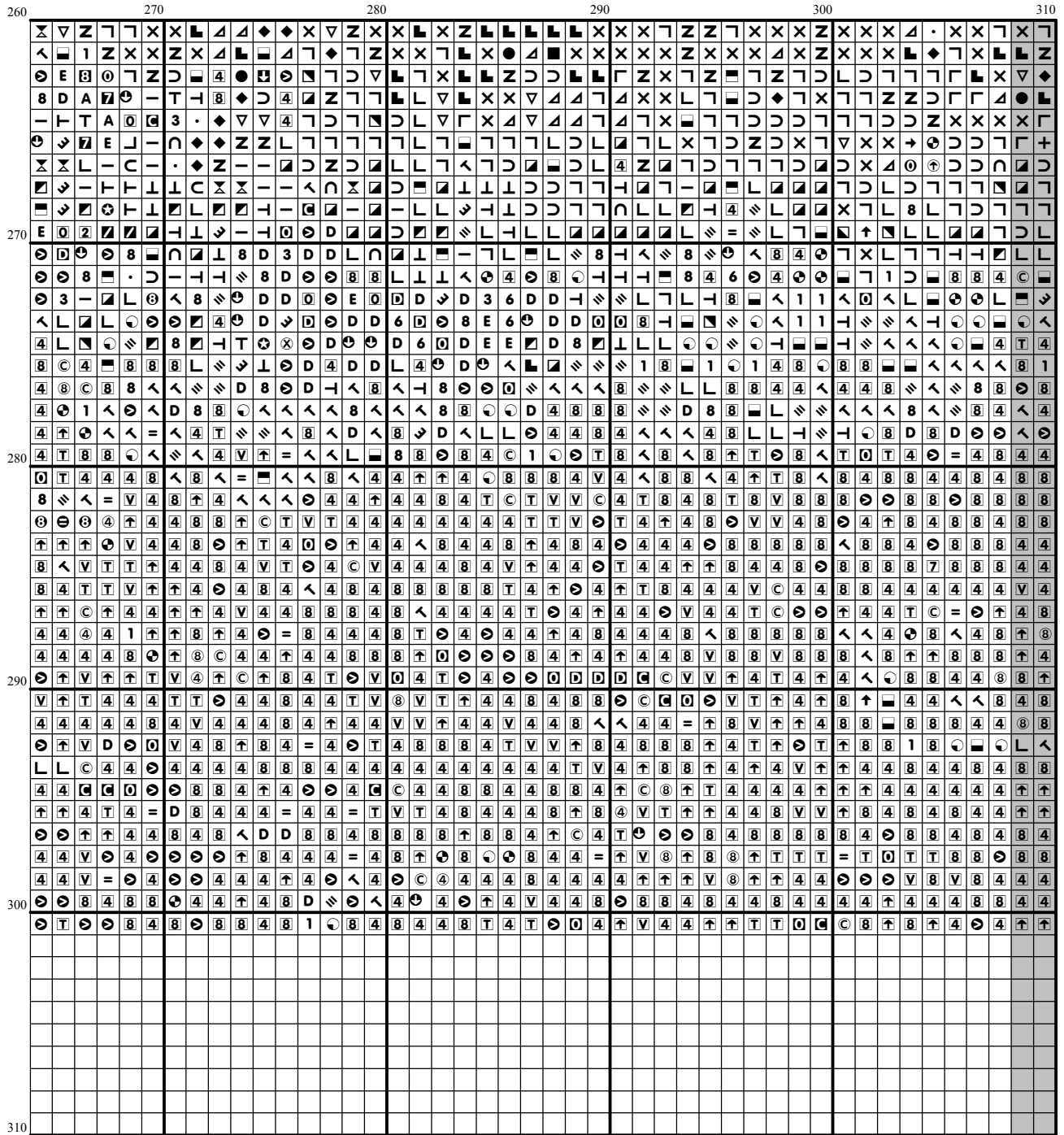
[illegible]



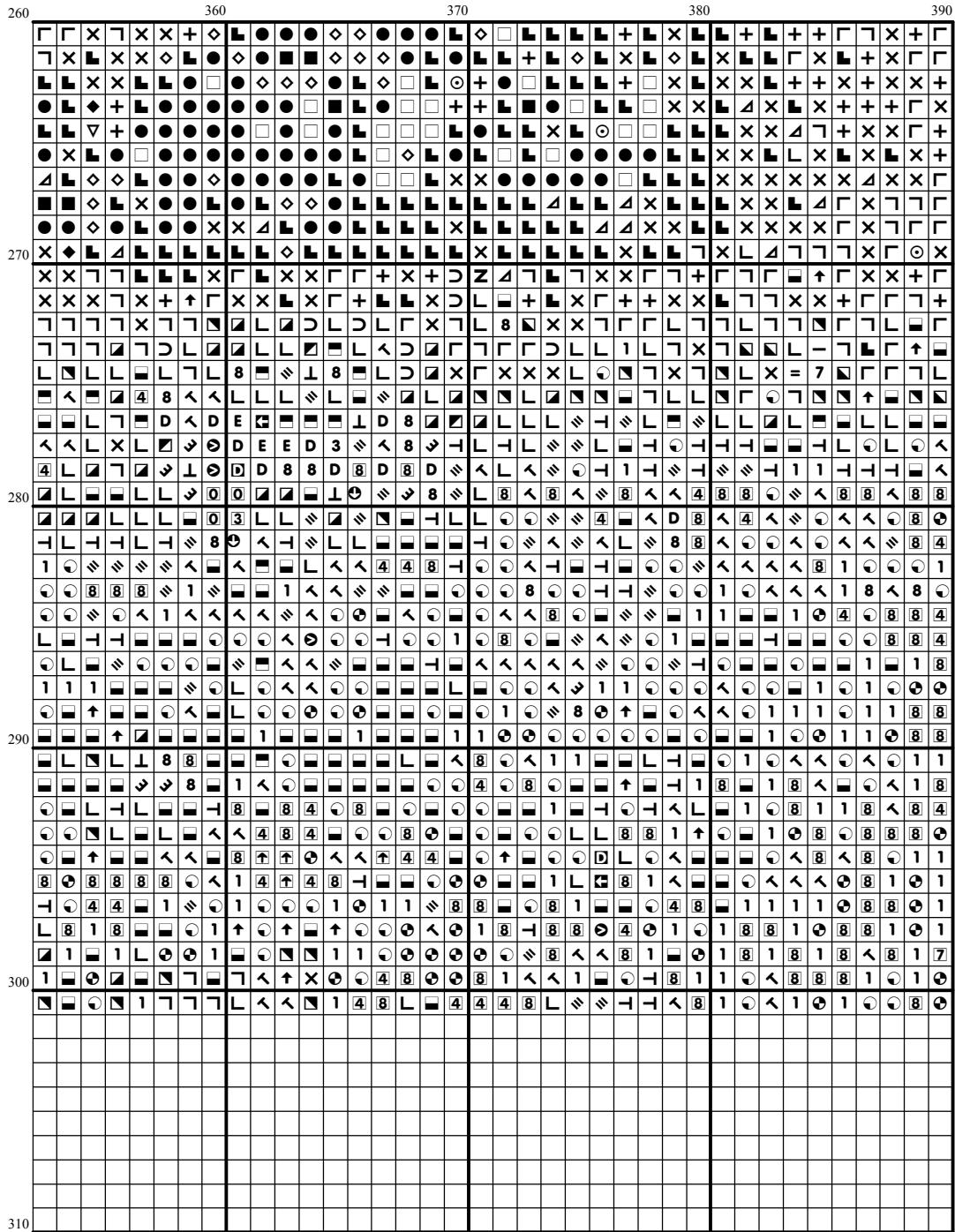








| | | | | | |
|-----|-----|-----|-----|-----|-----|
| 260 | 310 | 320 | 330 | 340 | 350 |
| 270 | | | | | |
| 280 | | | | | |
| 290 | | | | | |
| 300 | | | | | |
| 310 | | | | | |



Instructions and Symbol Key for Design "AN258 Best of Friends"

Fabric: 14 count Cream Aida

Stitches: 390 x 301 **Size:** 27.86 x 21.50 inches or 70.76 x 54.61 cm

Colours: DMC

Use 2 strands of thread for cross stitch

| Sym | No. | Colour Name | Sym | No. | Colour Name |
|-----|------|---------------------|-----|------|-----------------------|
| # | 154 | Prune rose | ⊙ | 157 | Light cornflower blue |
| + | 158 | Deep mauve | ← | 160 | Storm blue |
| ● | 161 | Ash blue | 2 | 165 | Pale moss green |
| T | 167 | Dark mustard brown | ④ | 168 | Mouse grey |
| ↑ | 169 | Pewter grey | ■ | 310 | Black |
| ┐ | 317 | Steel grey | ⊕ | 318 | Granite grey |
| □ | 336 | Indigo blue | ≡ | 369 | Bamboo leaf green |
| X | 413 | Iron grey | ▢ | 414 | Lead grey |
| ⬆ | 415 | Chrome grey | ⌂ | 433 | Chocolate brown |
| ■ | 451 | Shell pink grey | 8 | 452 | Pigeon grey |
| T | 453 | Turtledove grey | < | 471 | Tarragon green |
| ▲ | 520 | Dark fern green | ▣ | 522 | Trellis green |
| 7 | 523 | Ash green | = | 524 | Light grey green |
| └ | 535 | Stone grey | — | 610 | Dark golden brown |
| └ | 611 | Sisal brown | 3 | 612 | String brown |
| E | 613 | Rope brown | ▣ | 640 | Green grey |
| ≡ | 642 | Earth grey | ⊕ | 644 | Light green grey |
| L | 646 | Platinum grey | ○ | 647 | Rock grey |
| 4 | 648 | Pepper grey | 3 | 677 | Sand gold |
| ⊕ | 712 | Cream | 2 | 733 | Golden green |
| P | 734 | Light Olive green | 0 | 738 | Sahara cream |
| N | 747 | Sea mist blue | ⊕ | 762 | Pearl grey |
| E | 772 | Celery green | Ⓛ | 775 | Summer rain blue |
| ⊗ | 778 | Antique mauve | D | 822 | Cotton cream |
| ◇ | 823 | Blueberry blue | D | 828 | Morning sky blue |
| ⌂ | 829 | Dark green bronze | C | 830 | Green oak brown |
| T | 840 | Hare brown | ↘ | 841 | Deer brown |
| ⊕ | 842 | Beige rope | • | 898 | Teak brown |
| ⊕ | 926 | Greygreen | 7 | 927 | Oyster grey |
| ⑤ | 928 | Light pearl grey | ⊙ | 930 | Slate grey |
| → | 931 | Blue grey | ★ | 932 | Seagull blue |
| ▽ | 936 | Oaktree moss green | ♥ | 938 | Espresso brown |
| ● | 939 | Dark navy blue | ▣ | 950 | Beige |
| ▣ | 3012 | Marsh green | Z | 3021 | Cliff grey |
| ■ | 3022 | Elephant grey | ↙ | 3023 | Light platinum grey |
| V | 3024 | Pale steel grey | 8 | 3032 | Dark antique silver |
| 0 | 3033 | Antique silver | ▢ | 3041 | Medium lilac |
| 1 | 3042 | Lilac | Y | 3046 | Rye beige |
| ▣ | 3047 | Silver birch beige | ▢ | 3052 | Silver green |
| 6 | 3053 | Tweed green | © | 3072 | Pale pearl grey |
| M | 3078 | Pale yellow | ◆ | 3371 | Ebony |
| ∩ | 3740 | Dark antique violet | ⑧ | 3743 | Pale lilac |
| ⊕ | 3756 | Cloud blue | 8 | 3774 | Pale desert sand |
| D | 3782 | Gingerbread brown | ⌂ | 3787 | Wolf grey |
| L | 3799 | Anthracite grey | ● | 3807 | Cornflower blue |
| ⌂ | 3815 | Eucalyptus Green | ▣ | 3817 | Polar tree green |
| N | 3823 | Ivory | Ⓛ | 3840 | Light lavender blue |
| ▣ | 3860 | Taupe mauve | └ | 3861 | Light taupe |

| | | | | | |
|---|------|-------------------|---|------|----------------|
| ⊗ | 3862 | Mocha brown | ⌞ | 3863 | Otter brown |
| A | 3864 | Light mocha brown | ⊗ | 3865 | Winter white |
| ◼ | 3866 | Garlic cream | ⊖ | 5200 | B Bright white |

This chart has been designed and printed with our best intentions of being without mistakes. However, the possibility of human error, printing mistakes or the variation of individual stitching does exist, and we regret that we cannot be responsible for this.

Note: The shaded blocks on the chart represent overlapping stitches.
 Copyright © Claxxic Cross Stitch 2005 All rights reserved.