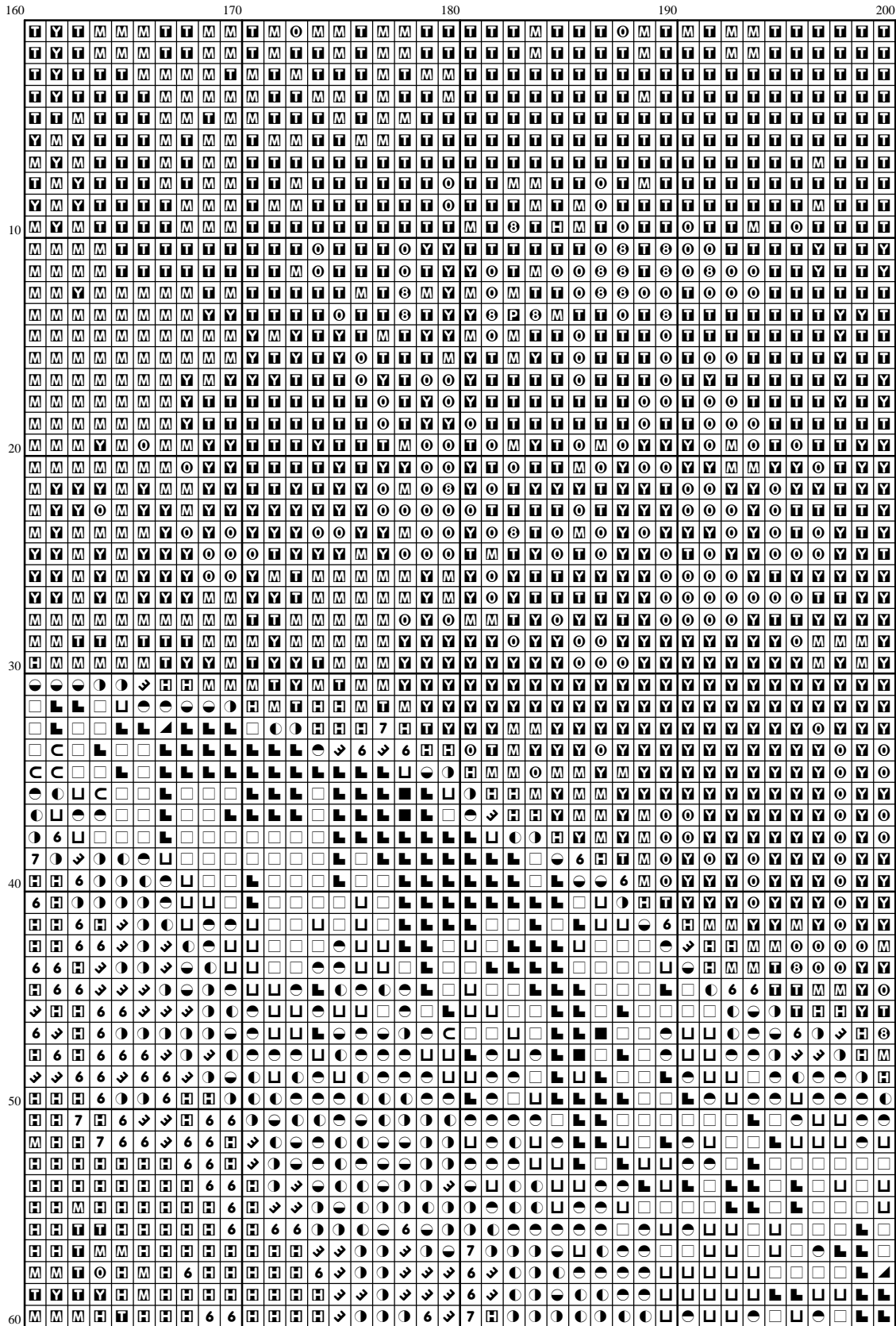
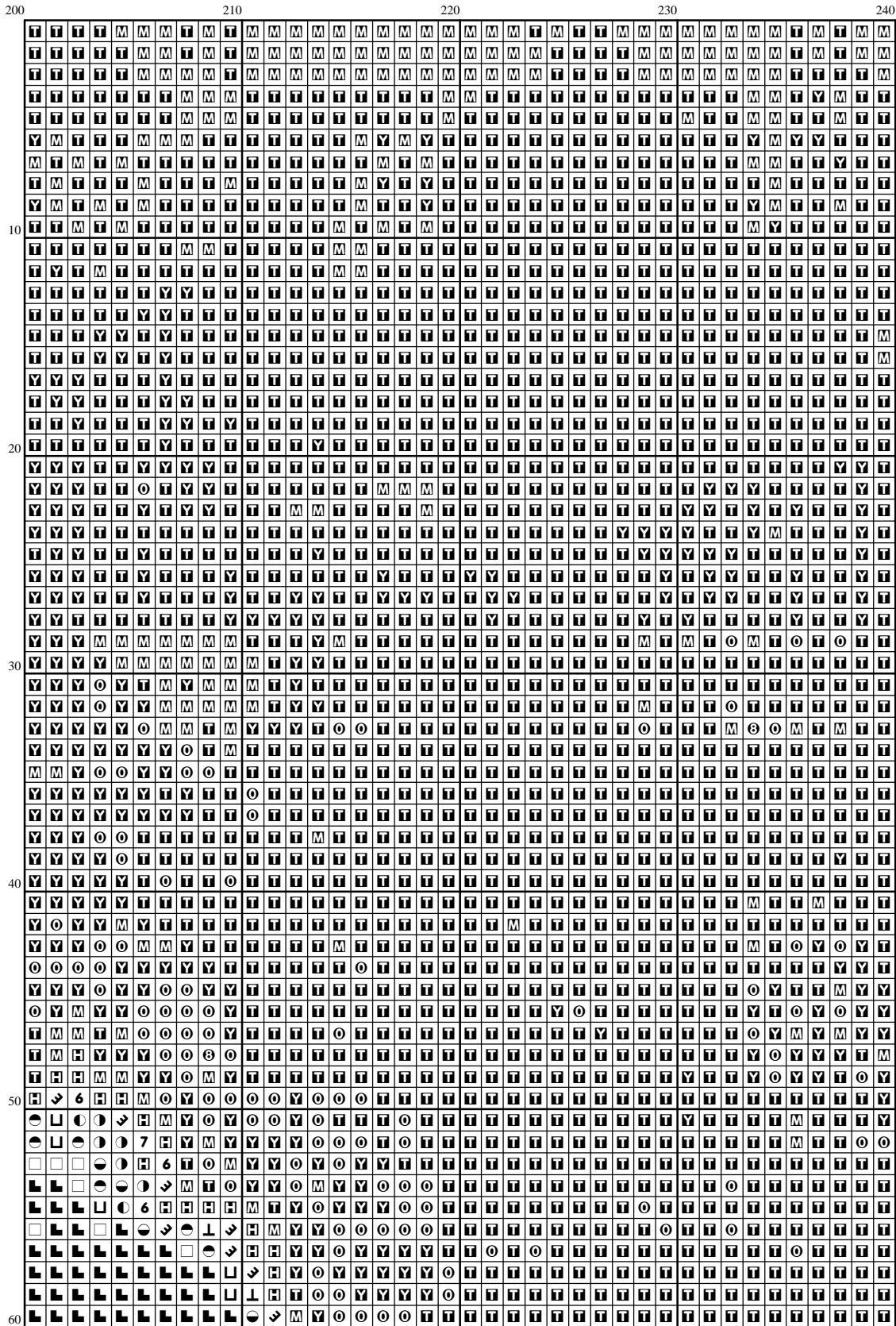


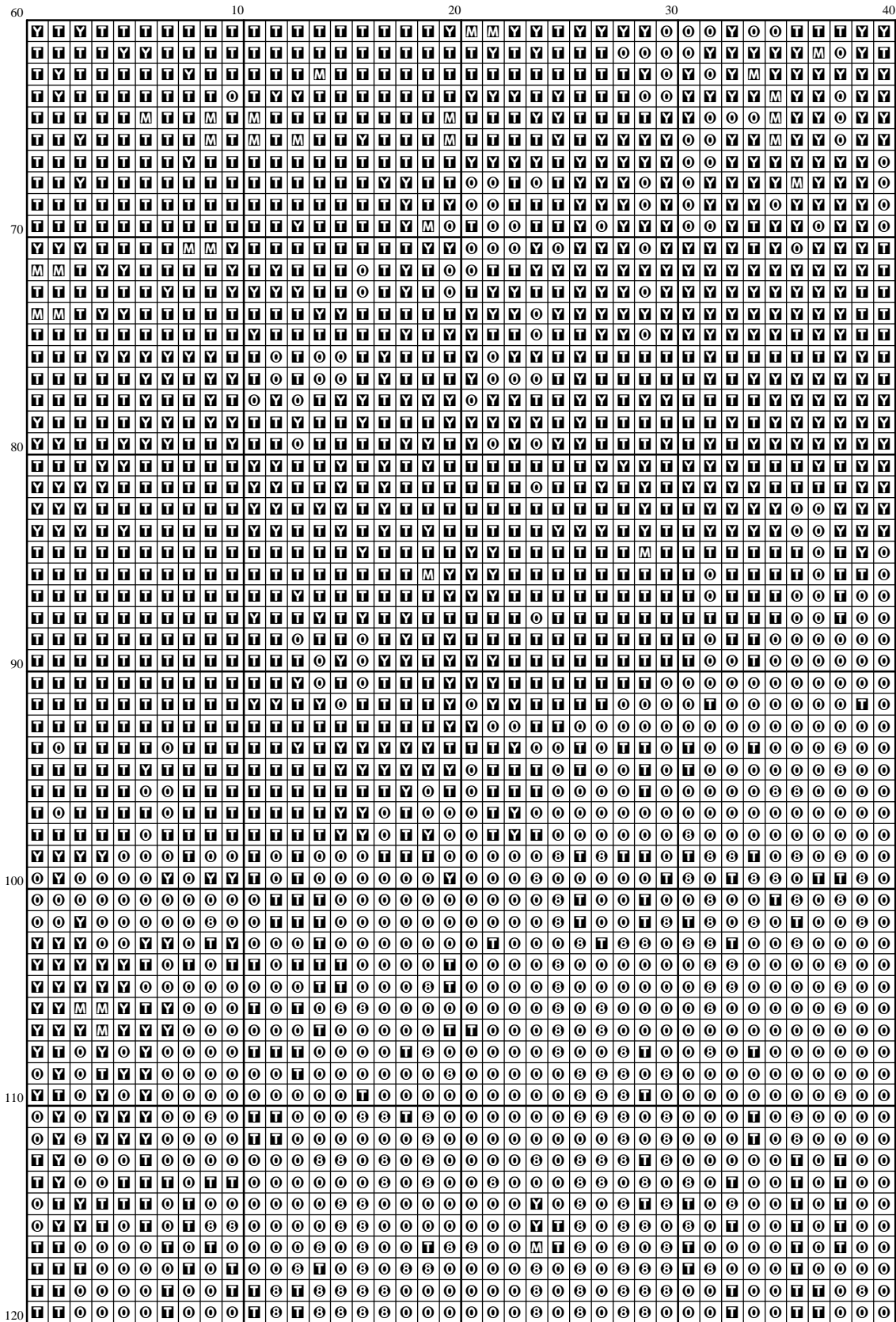
[illegible]

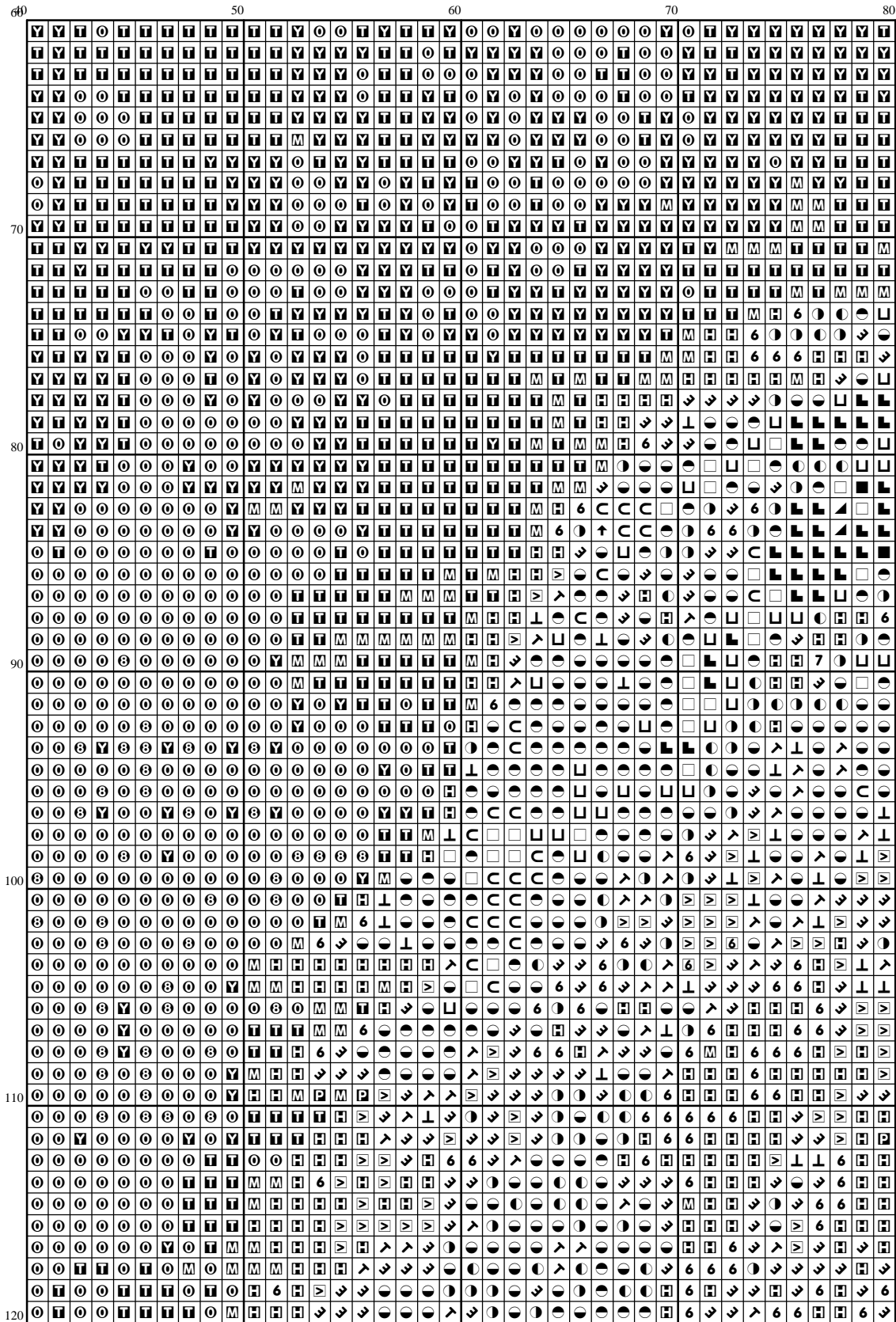


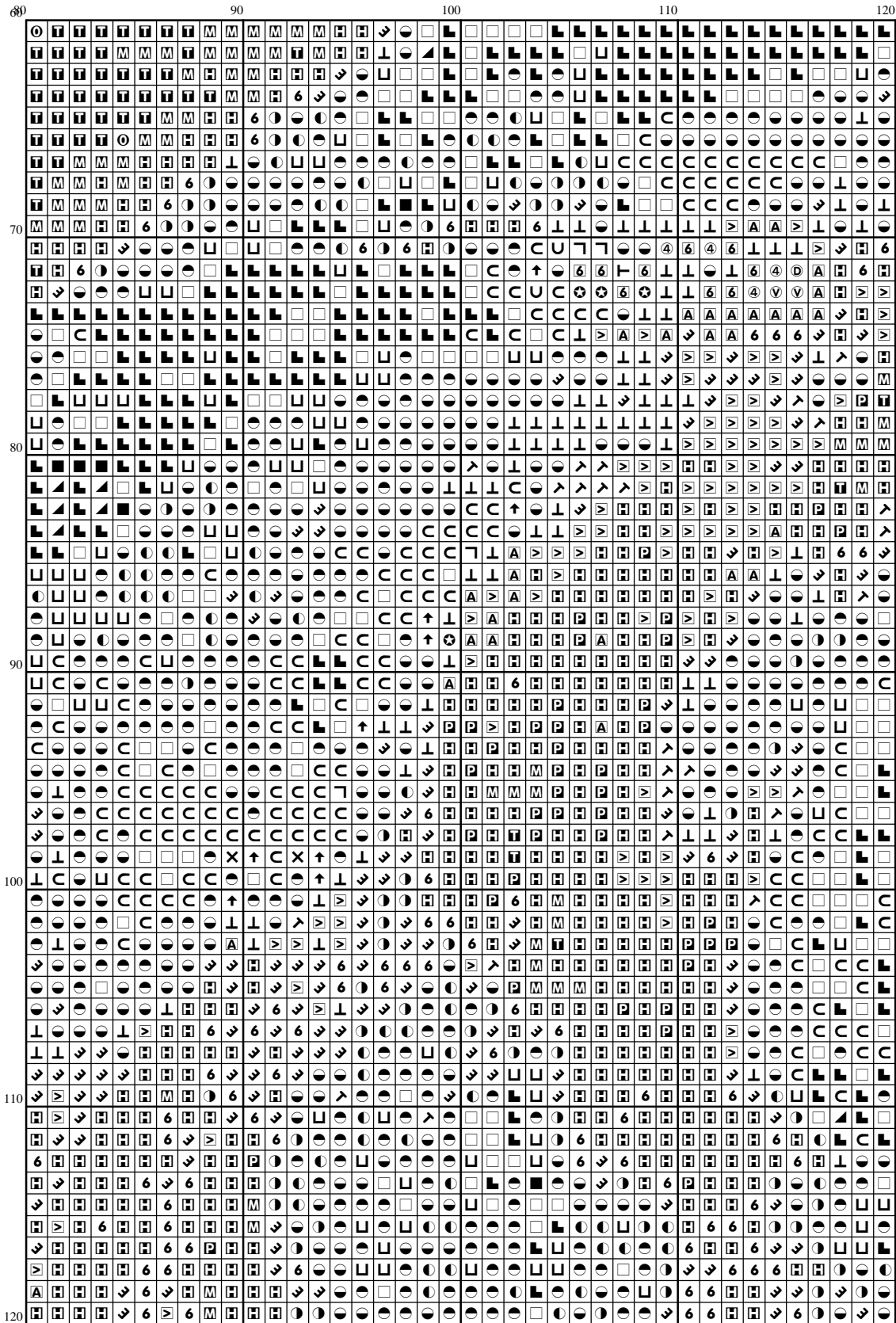


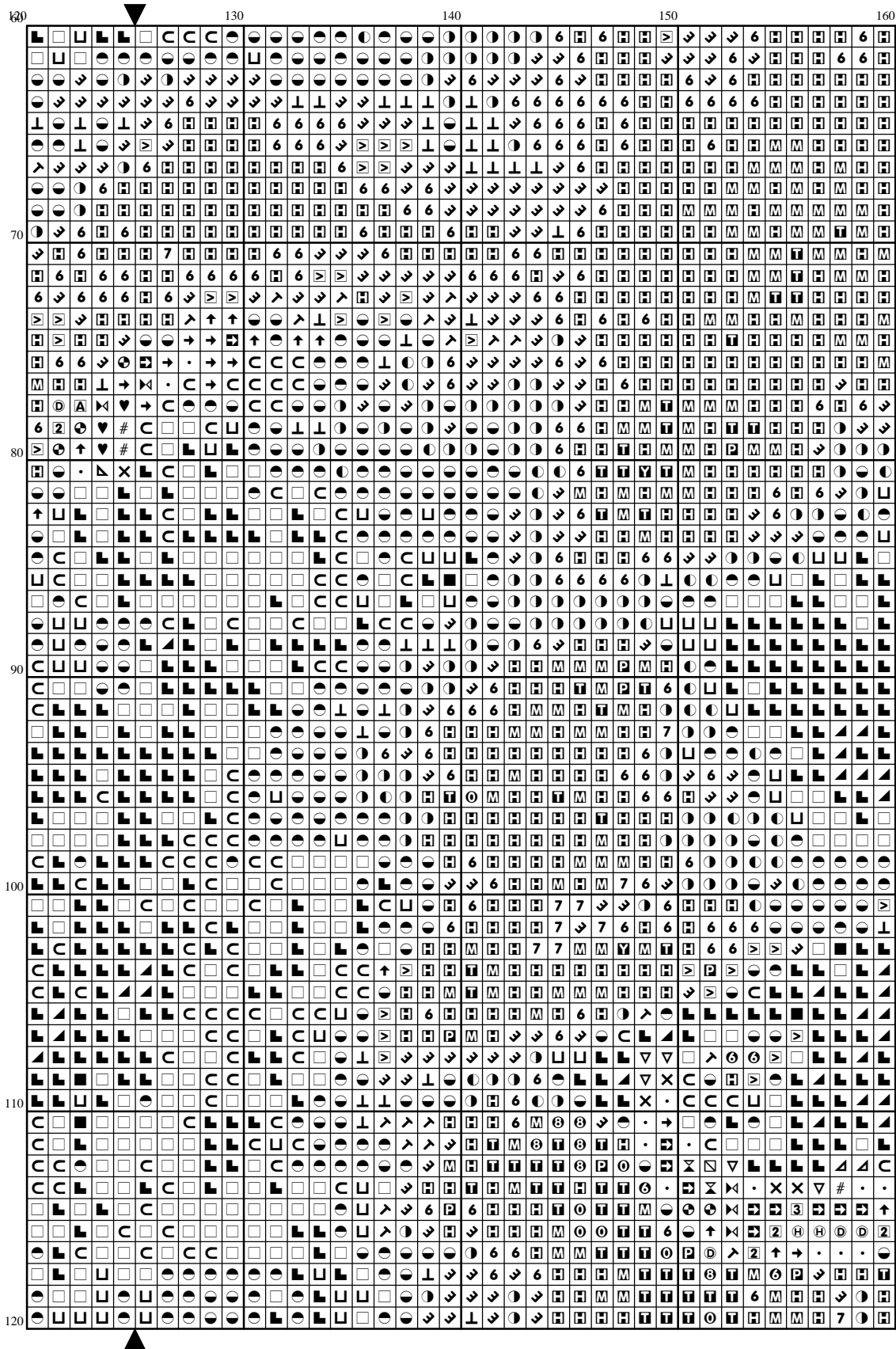


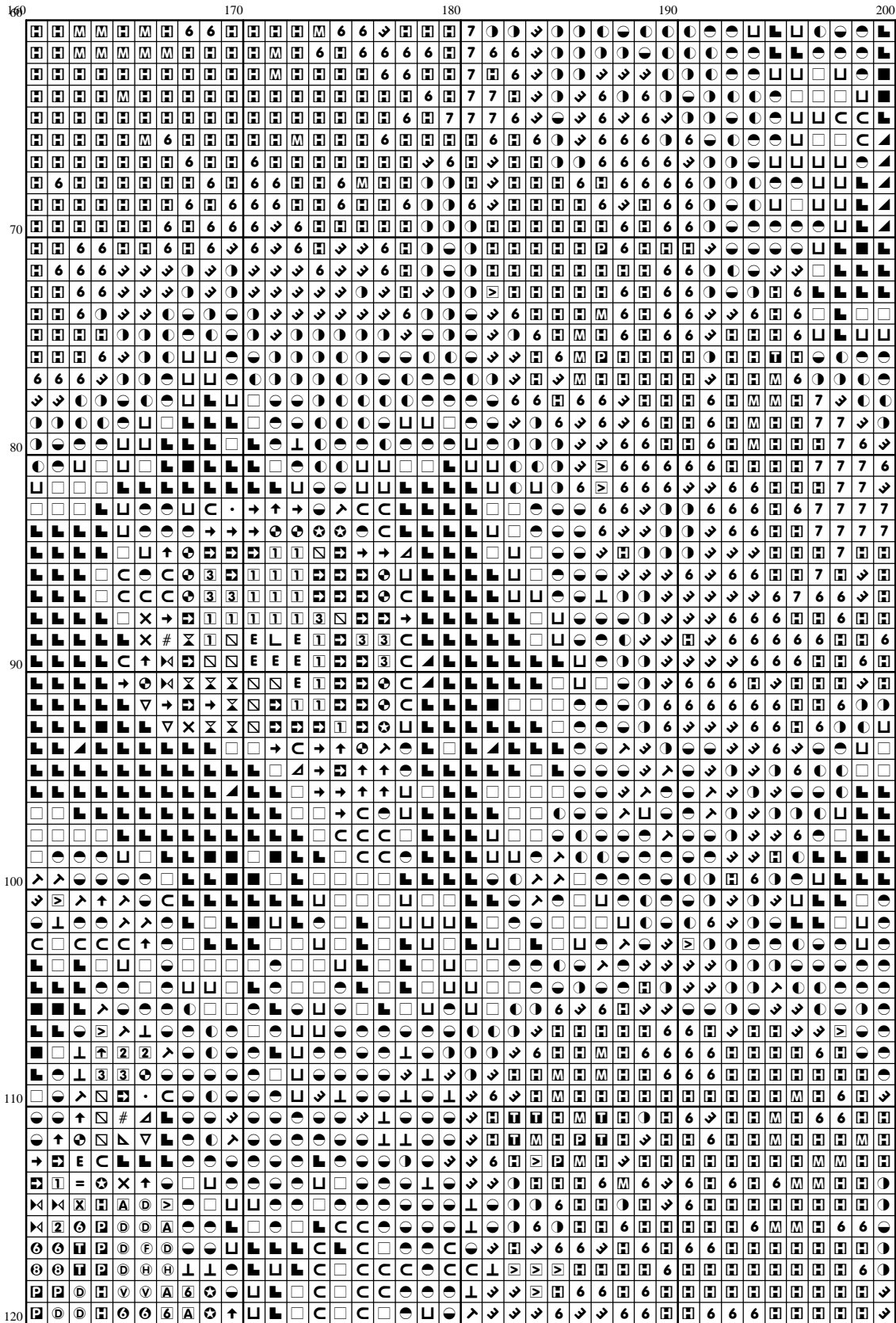
[illegible]

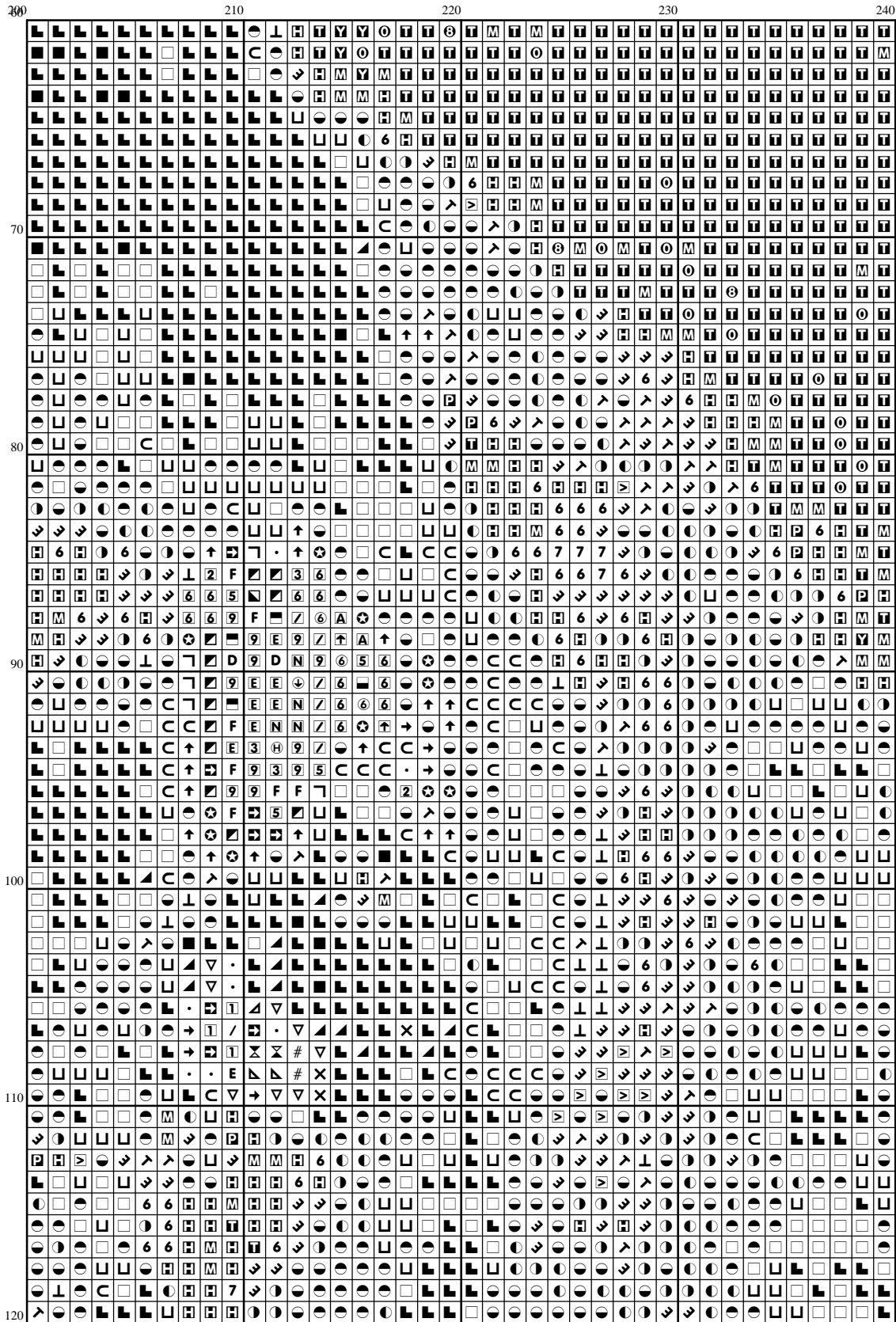


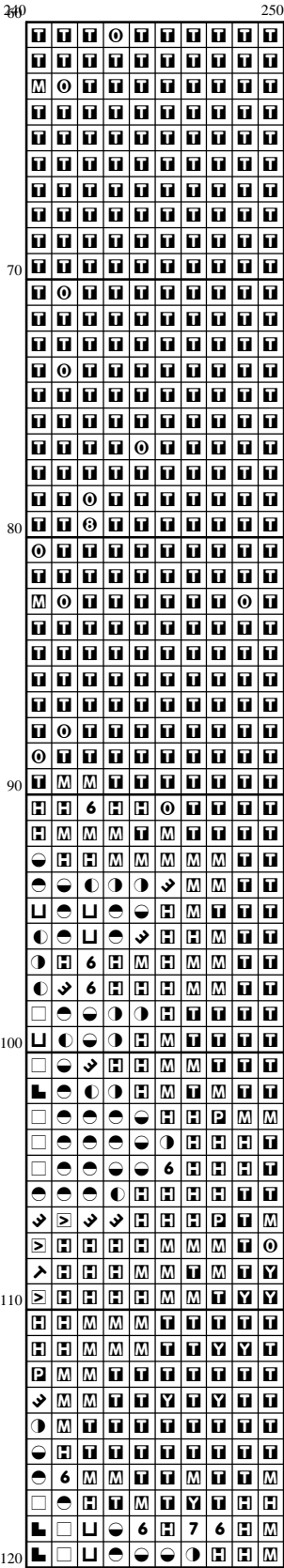


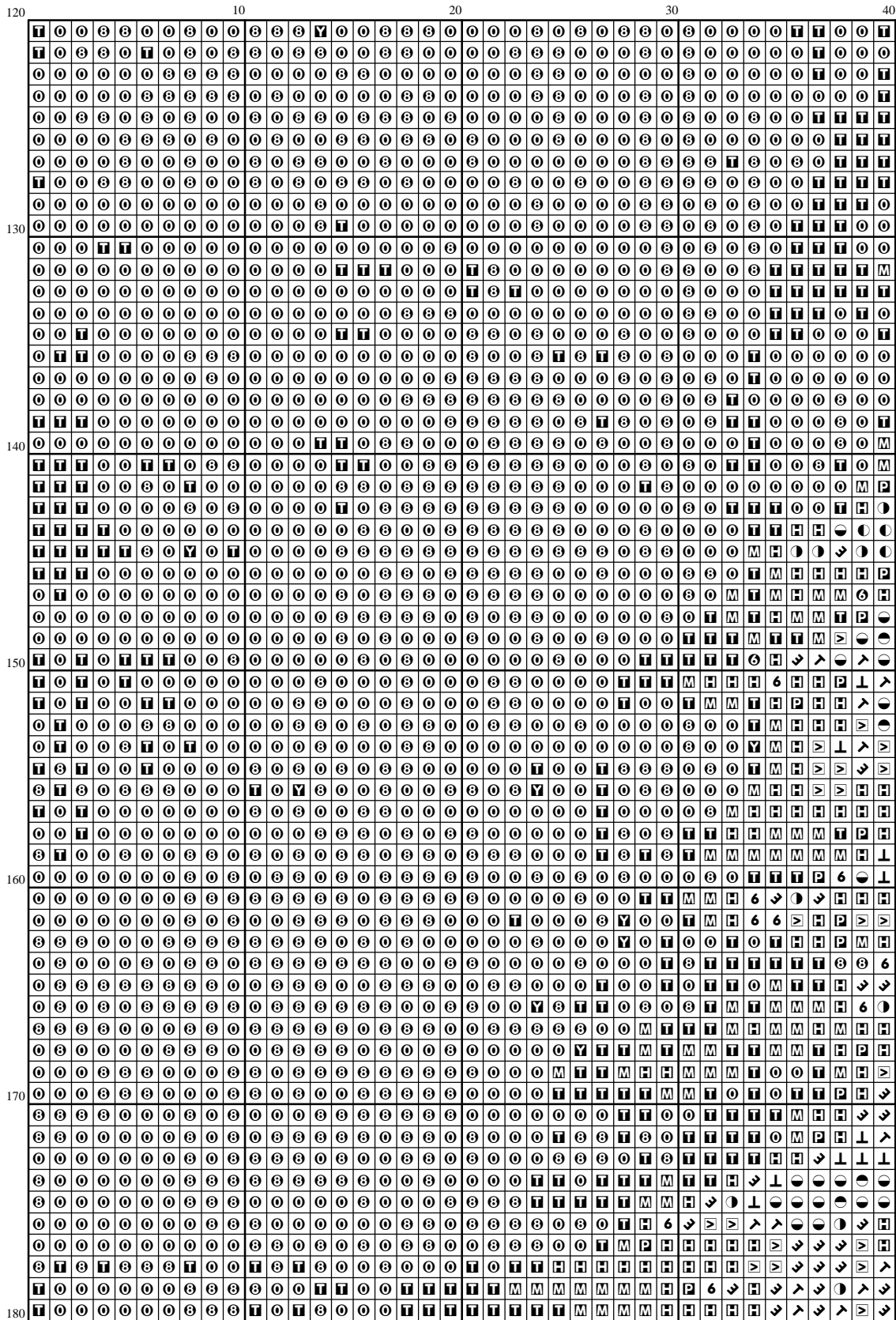


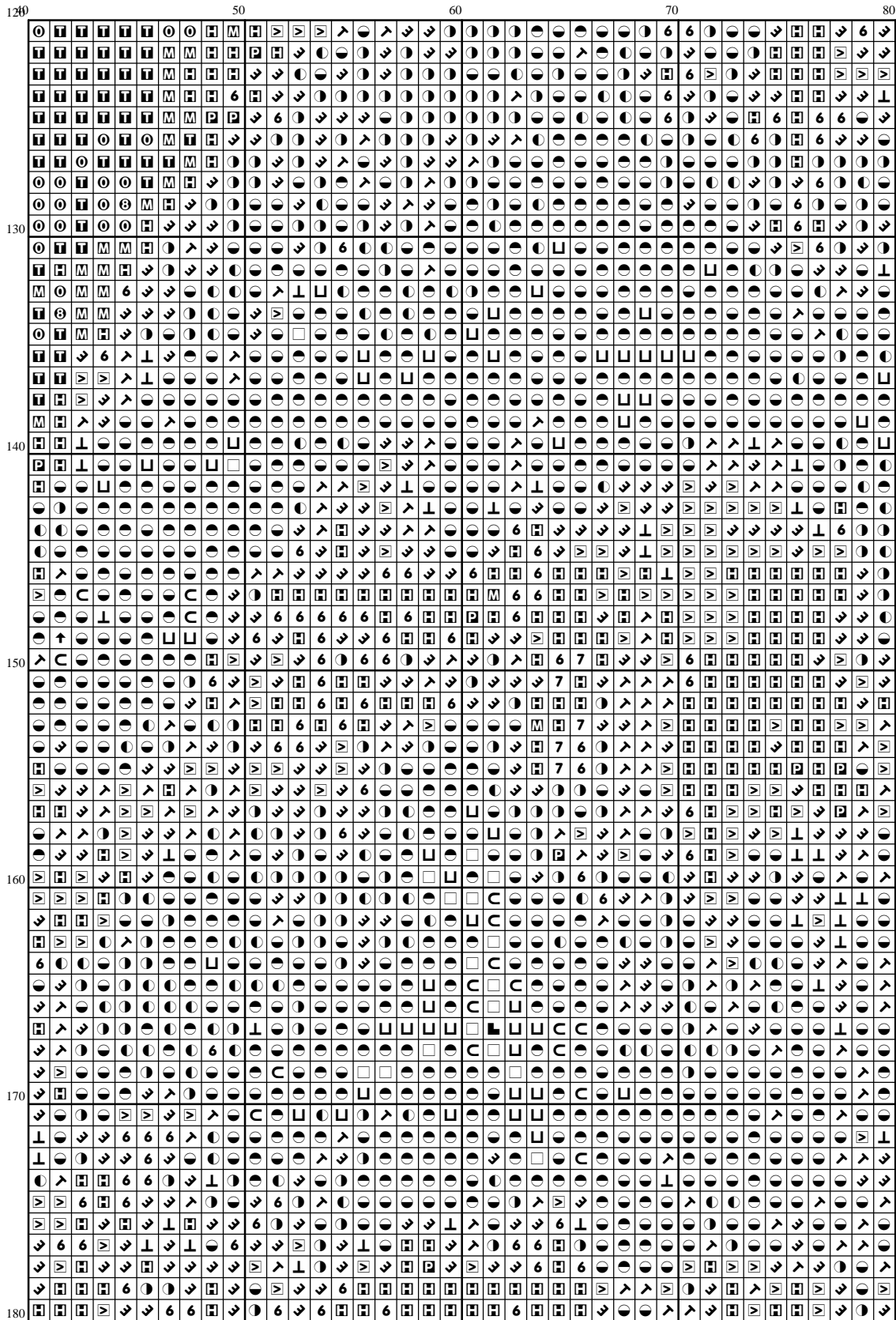


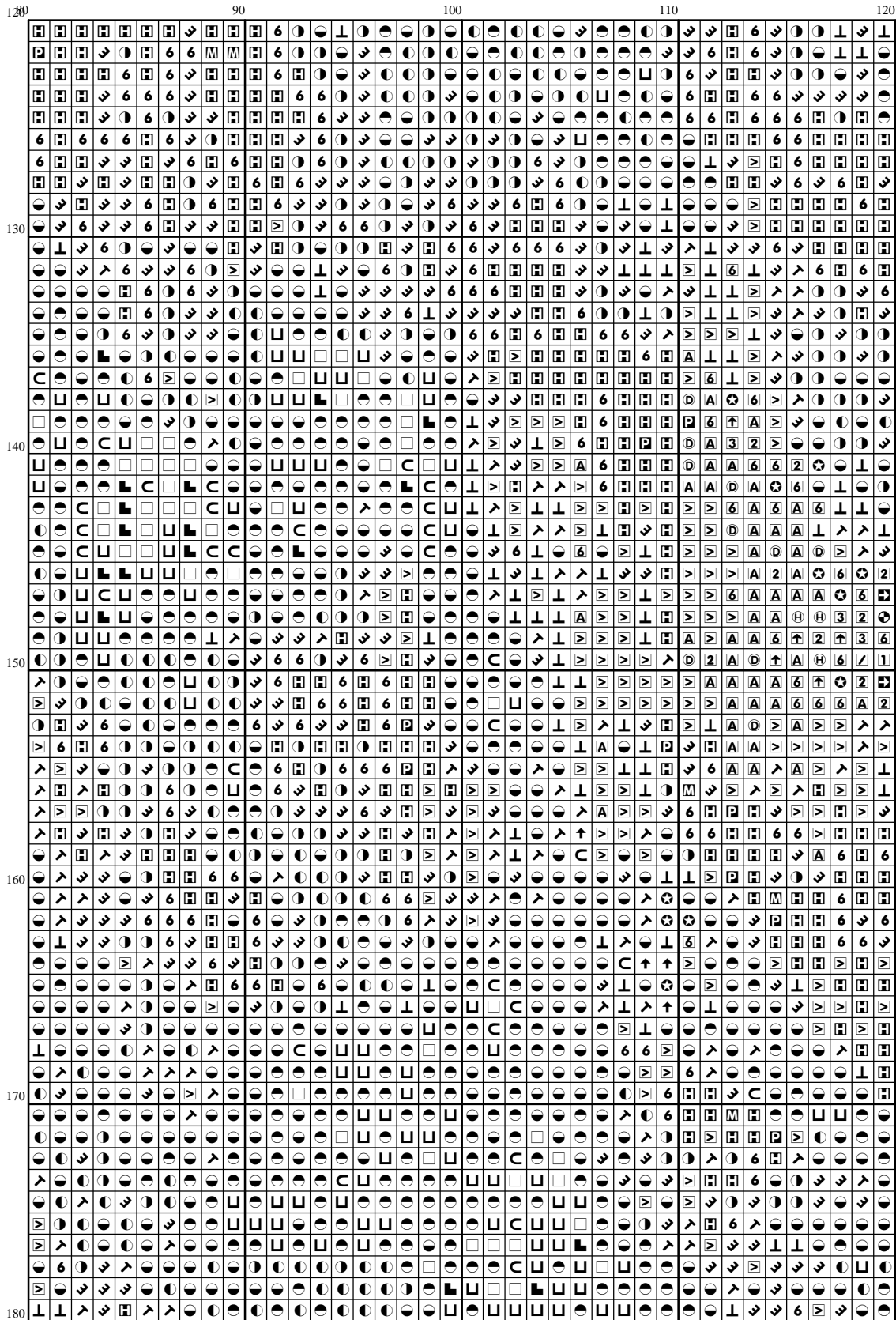


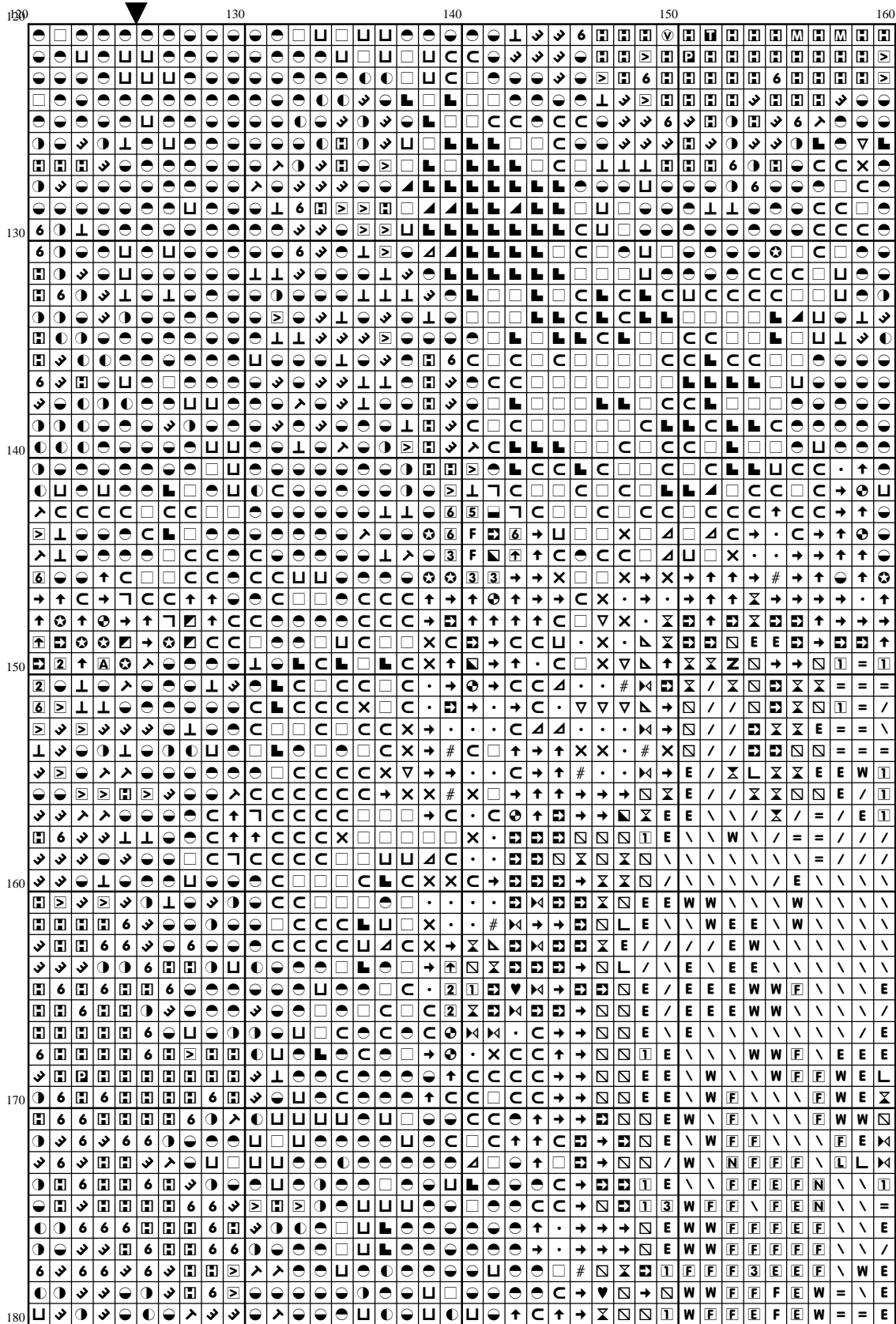


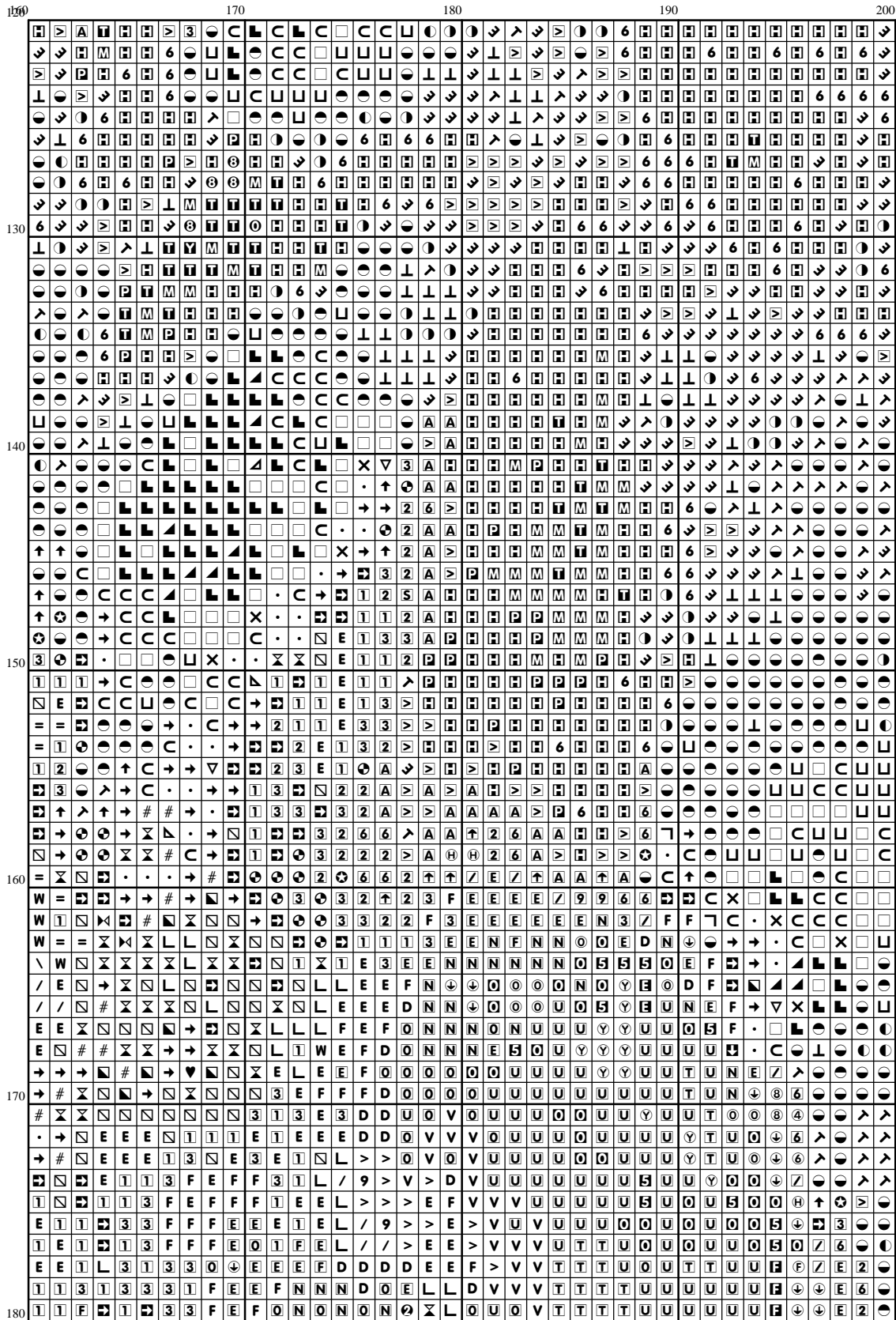


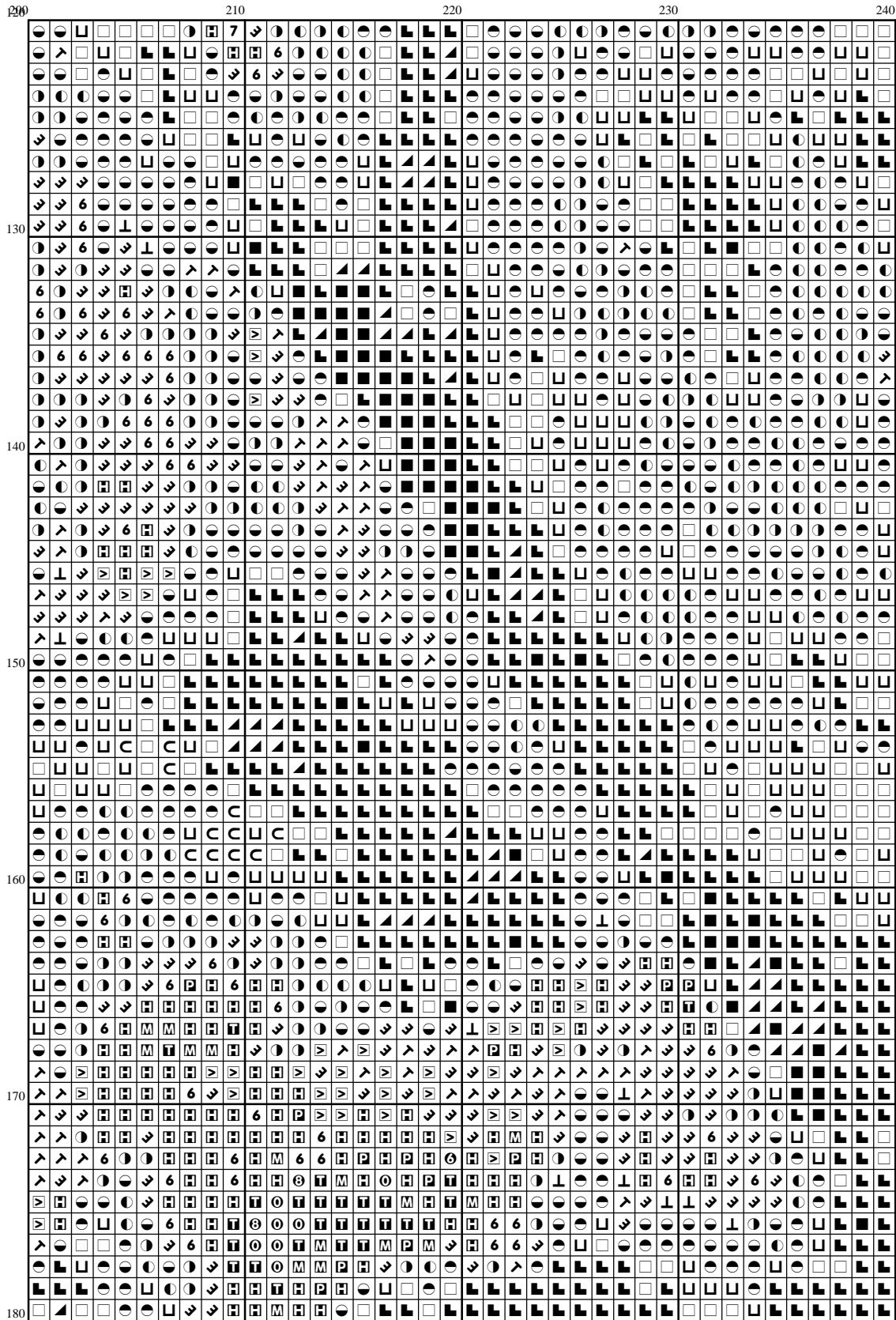


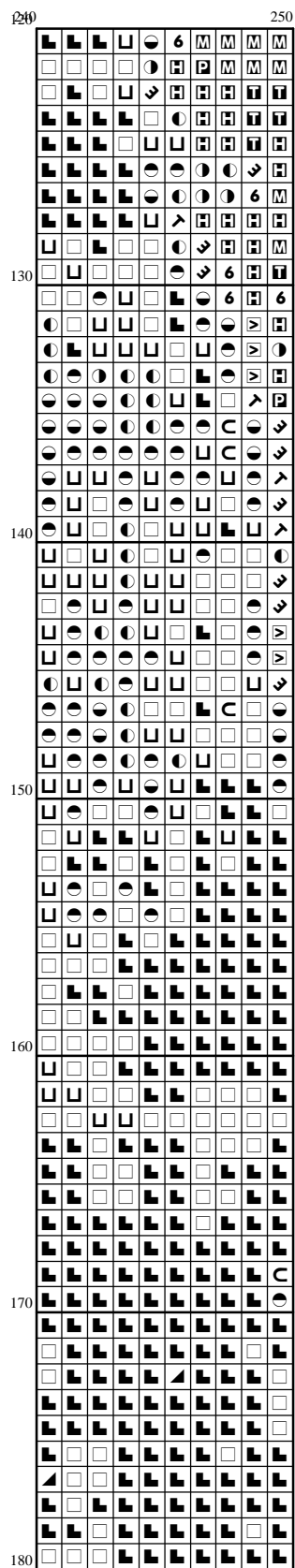






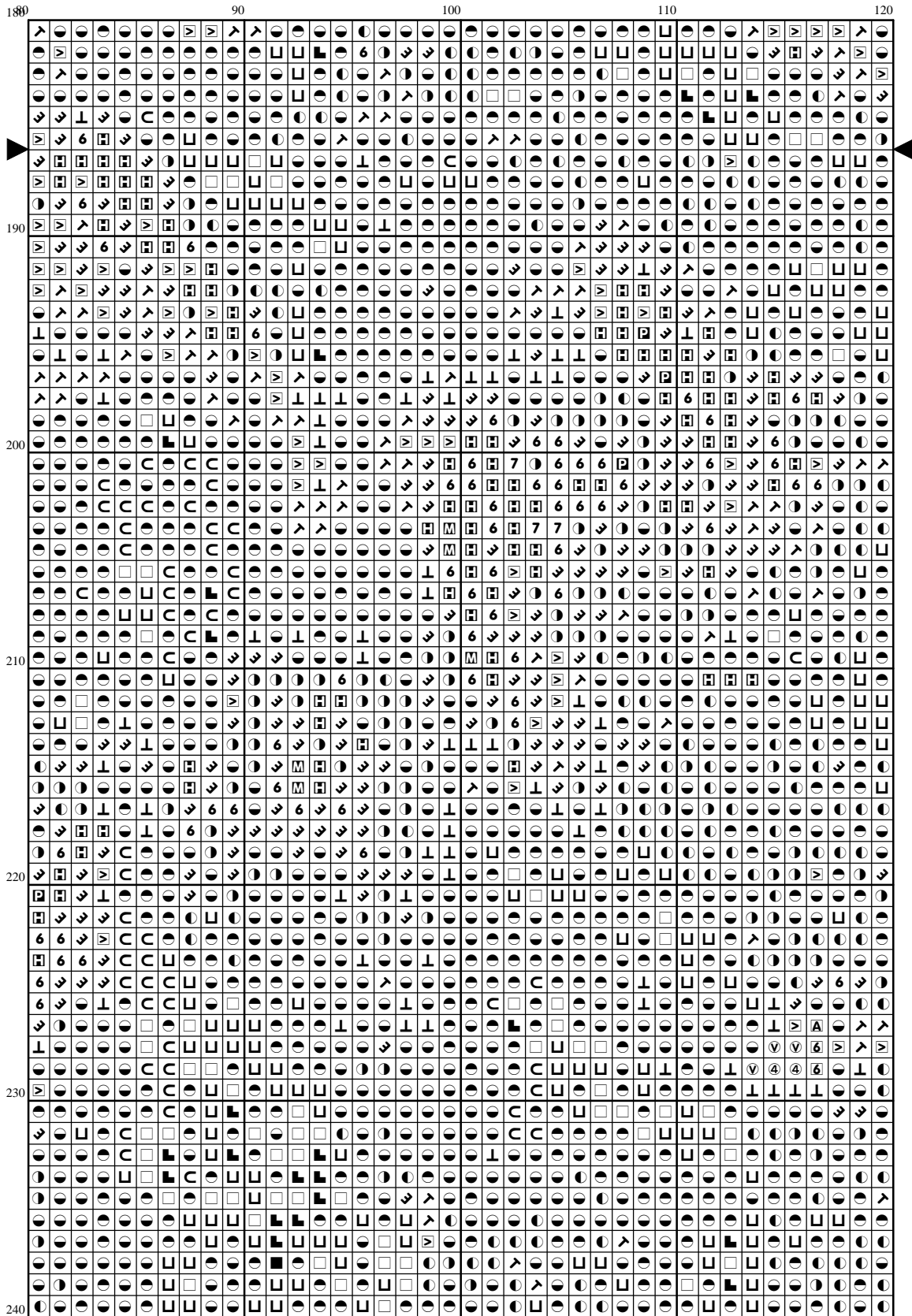


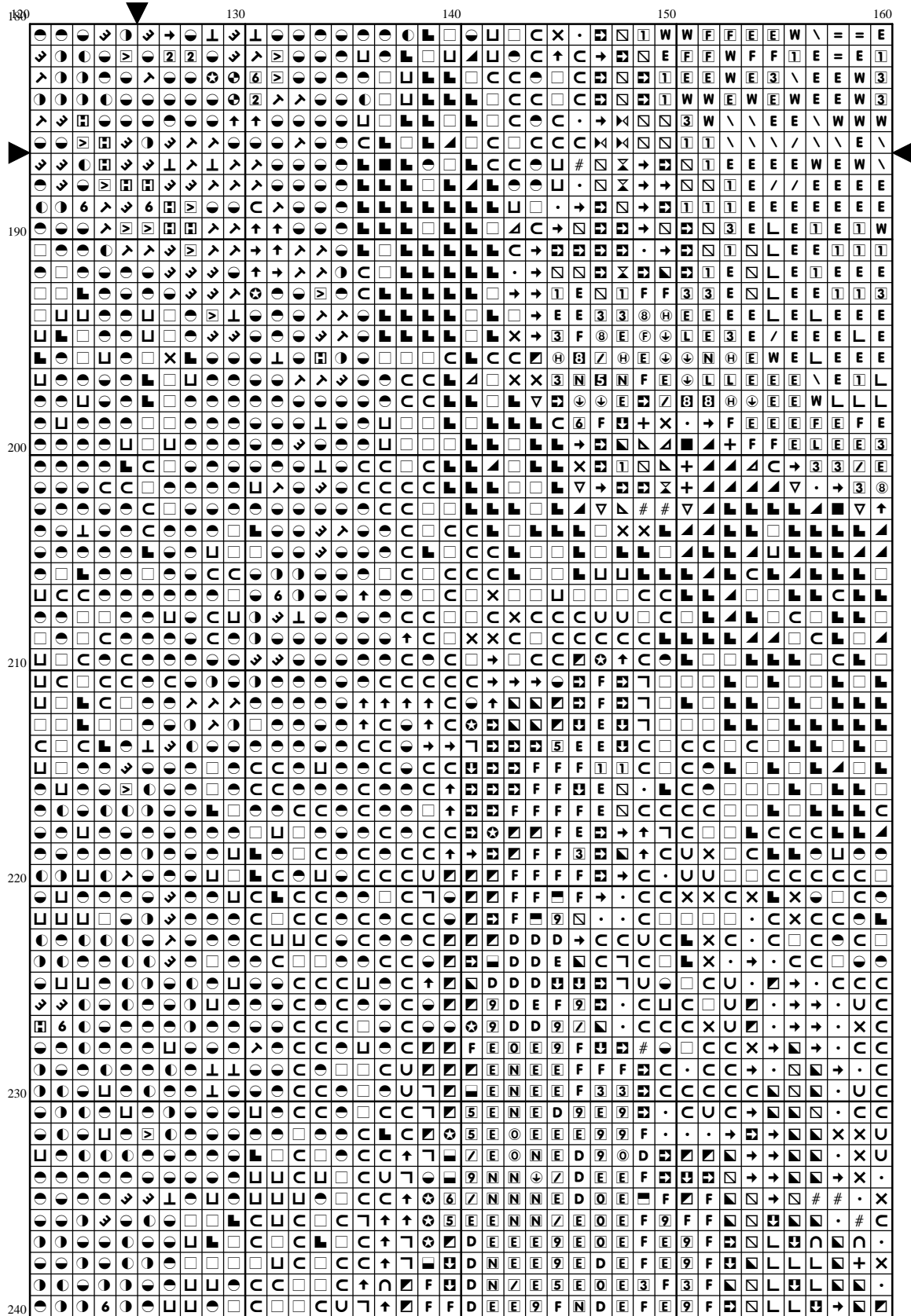


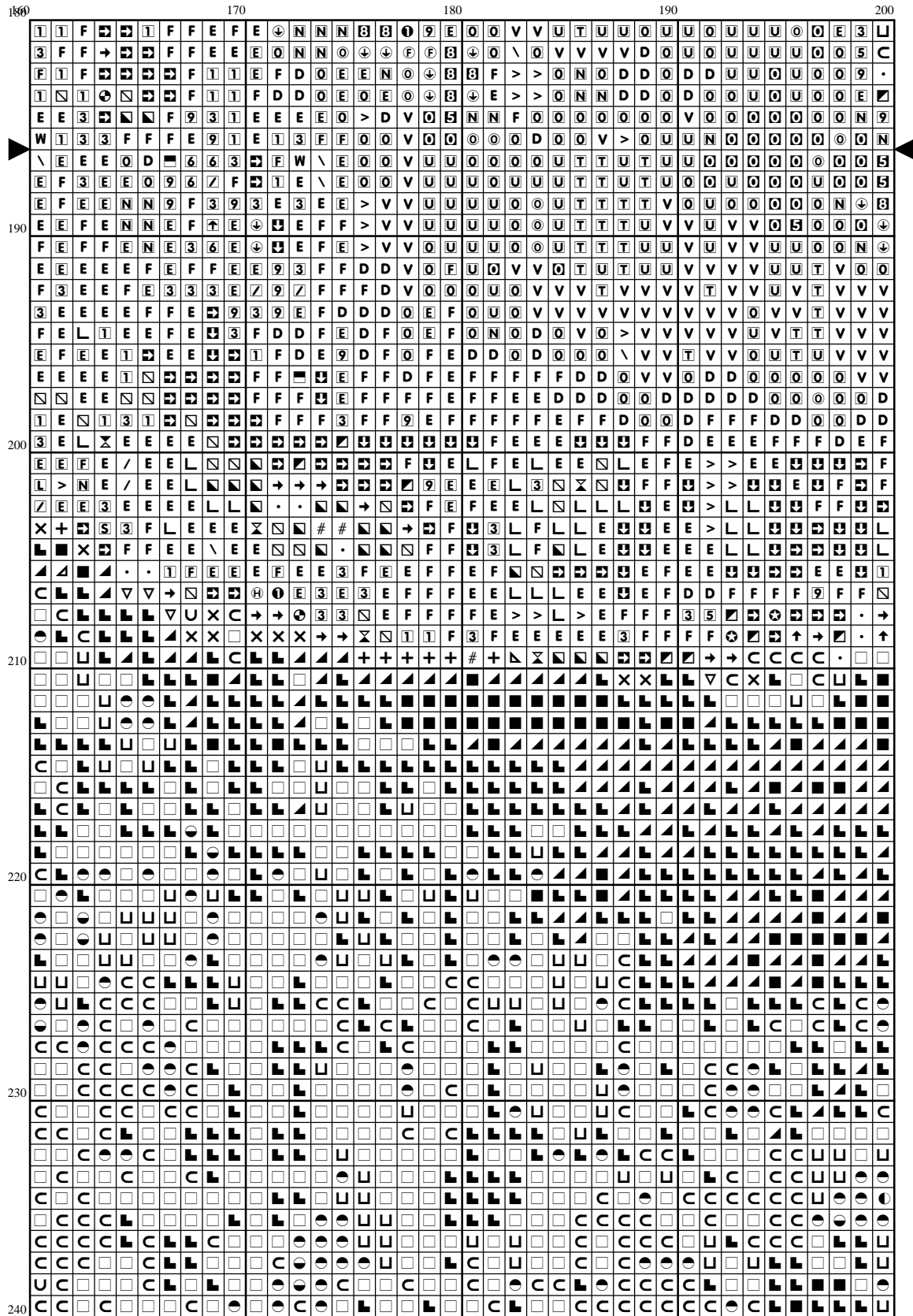


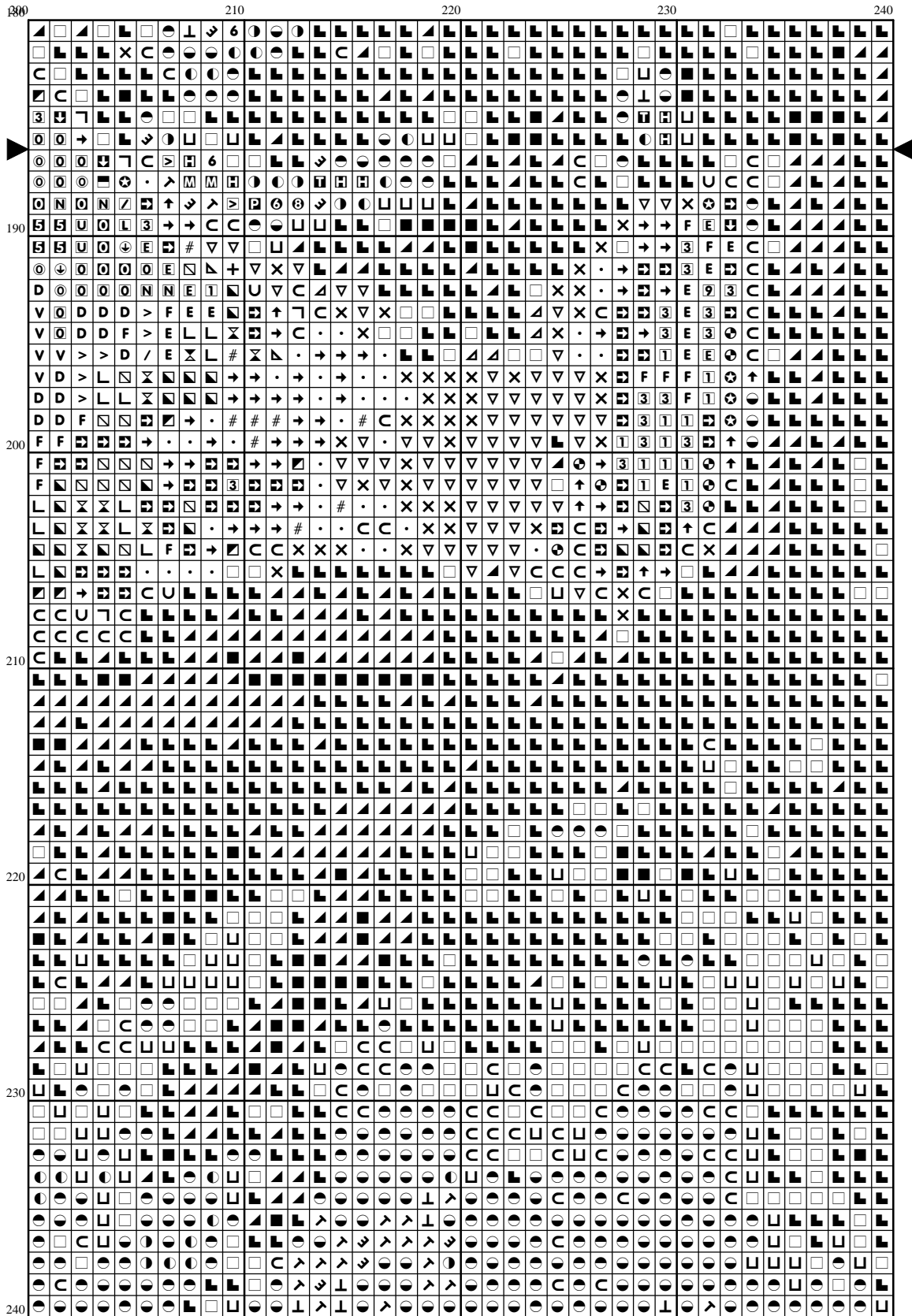
[illegible]

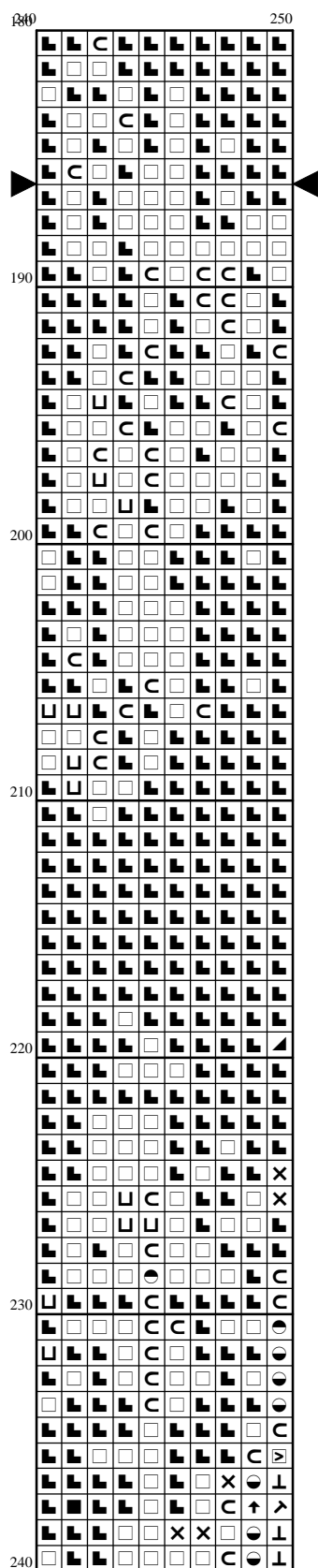
The image displays a large grid of symbols, organized into 10 groups of 18 rows each. The groups are labeled 190, 200, 210, 220, and 230 on the left. The columns are labeled 50, 60, 70, and 80 at the top. The symbols are a mix of geometric shapes, numbers, and letters, arranged in a complex, repeating pattern.



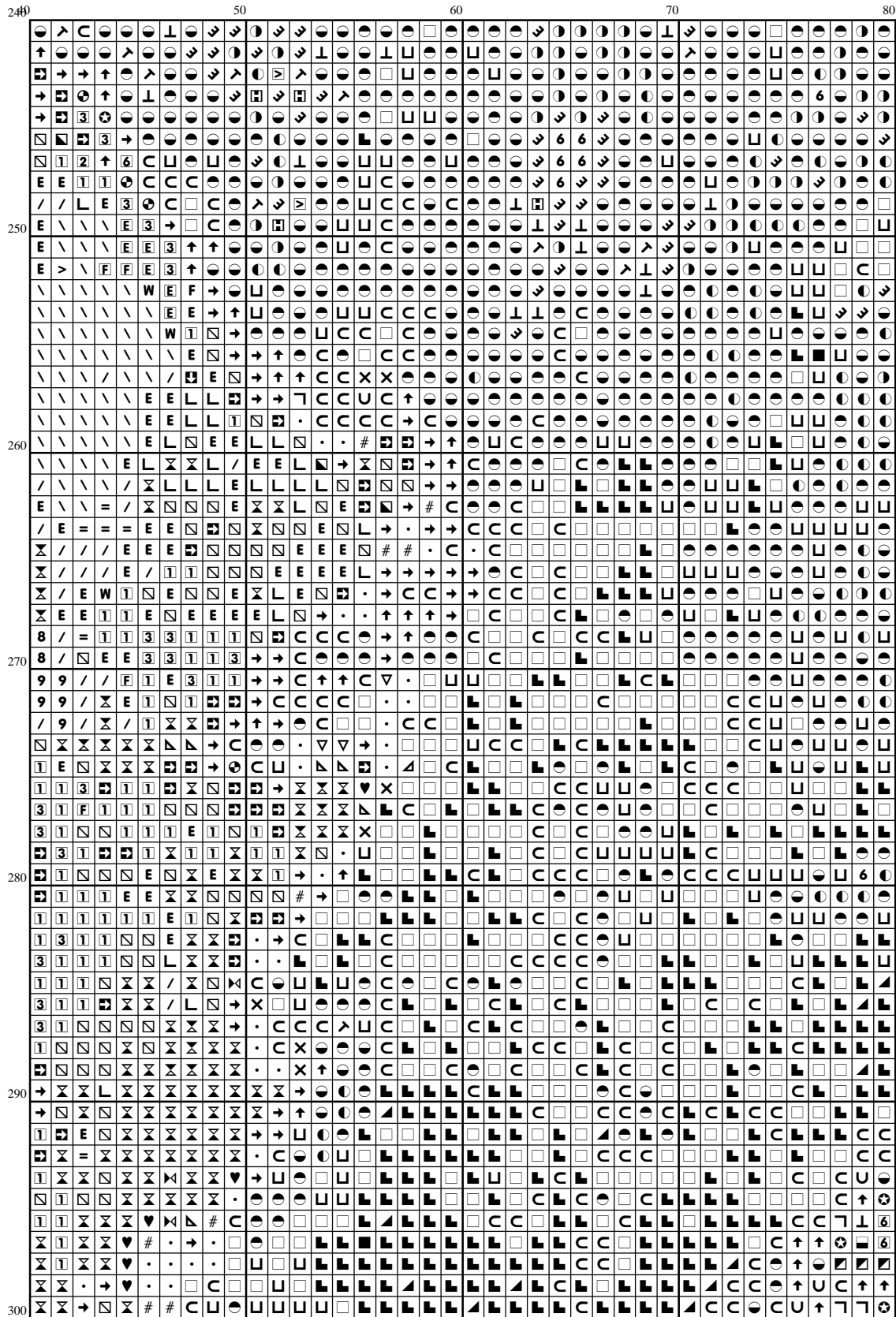


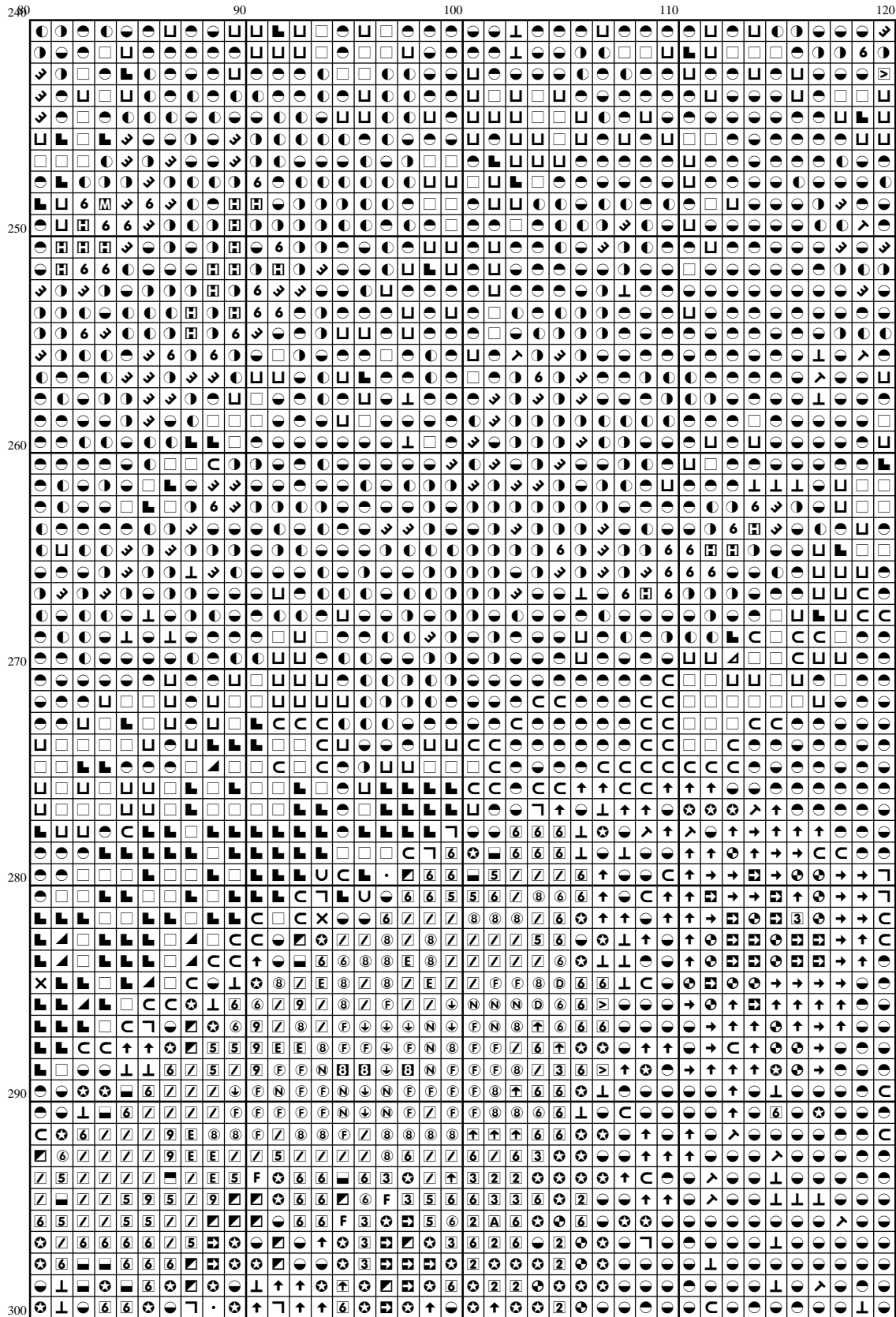


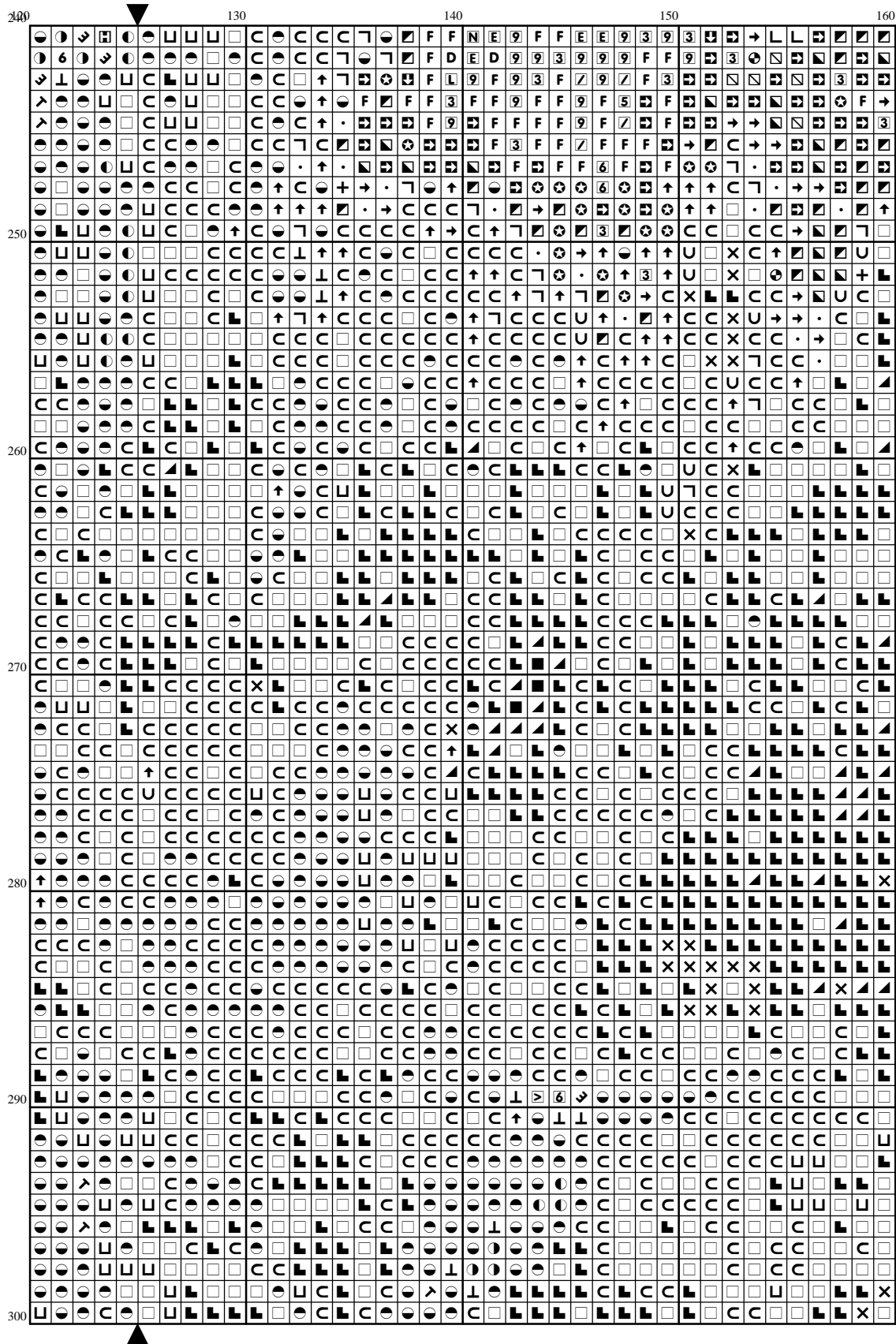


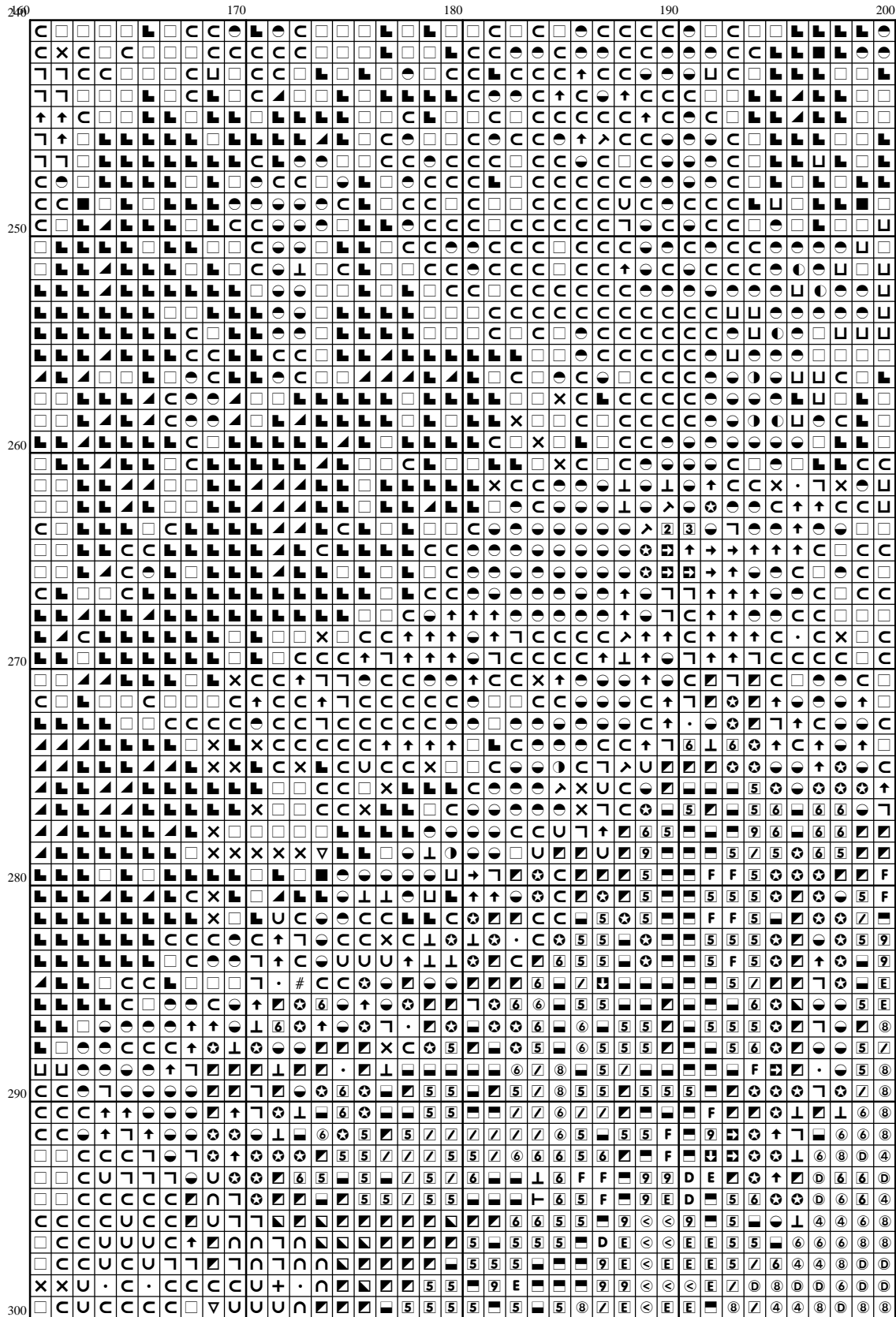


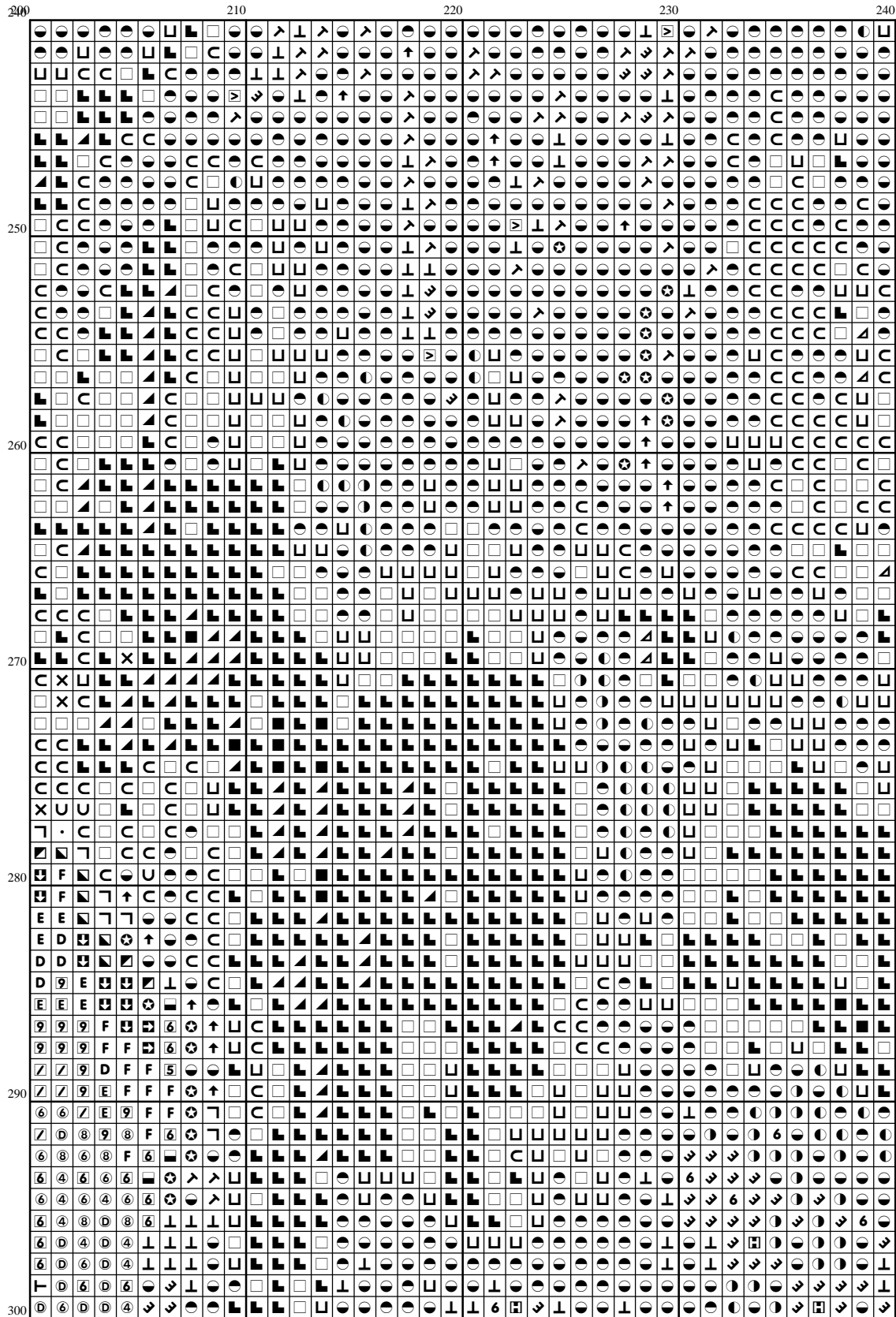
[illegible]

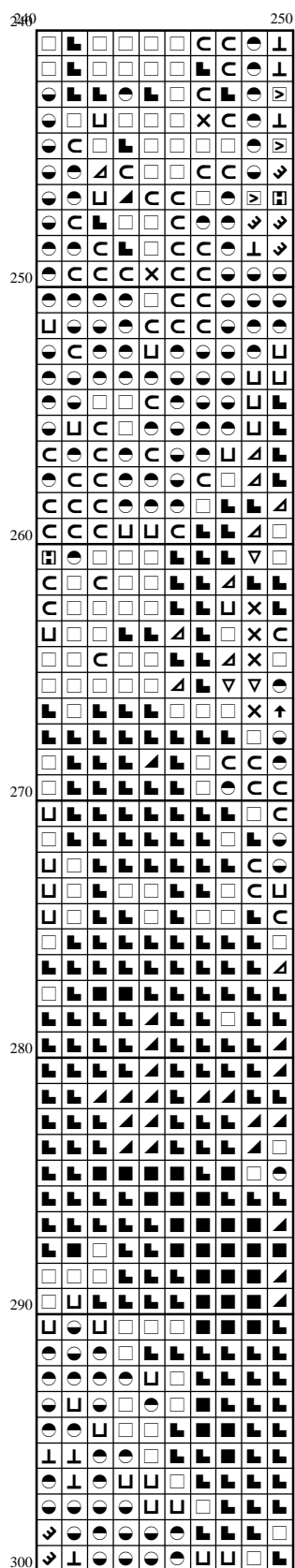




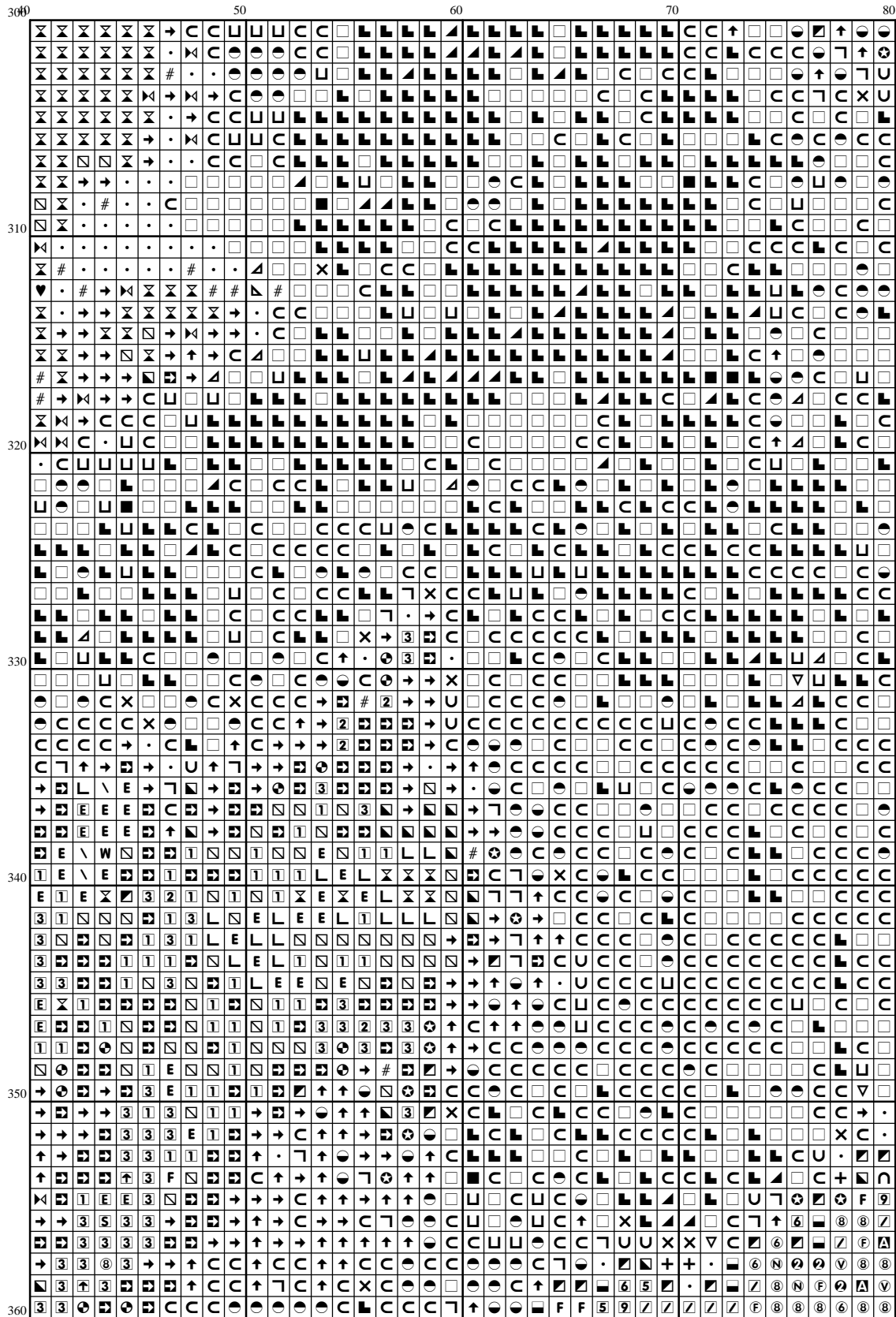




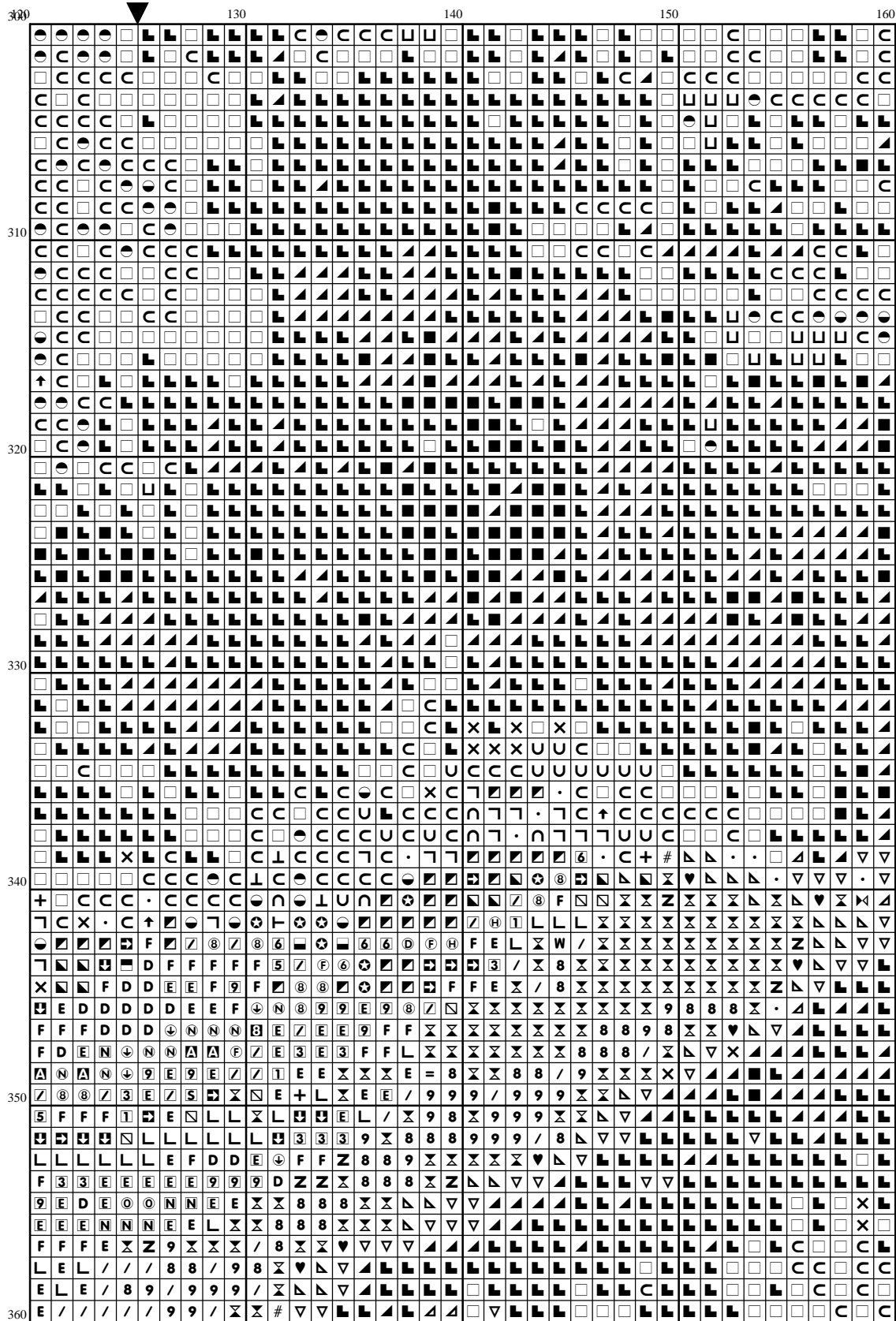


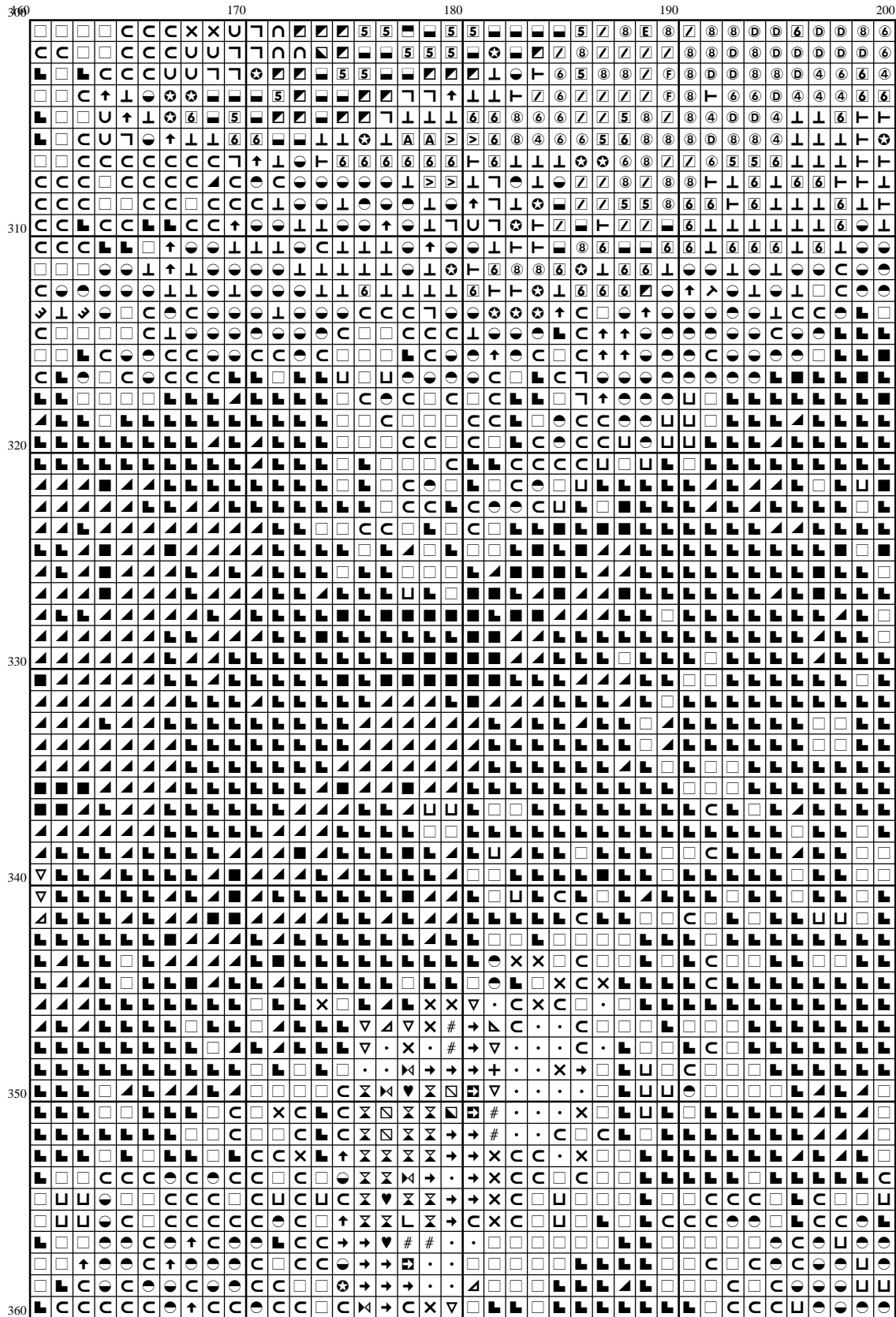


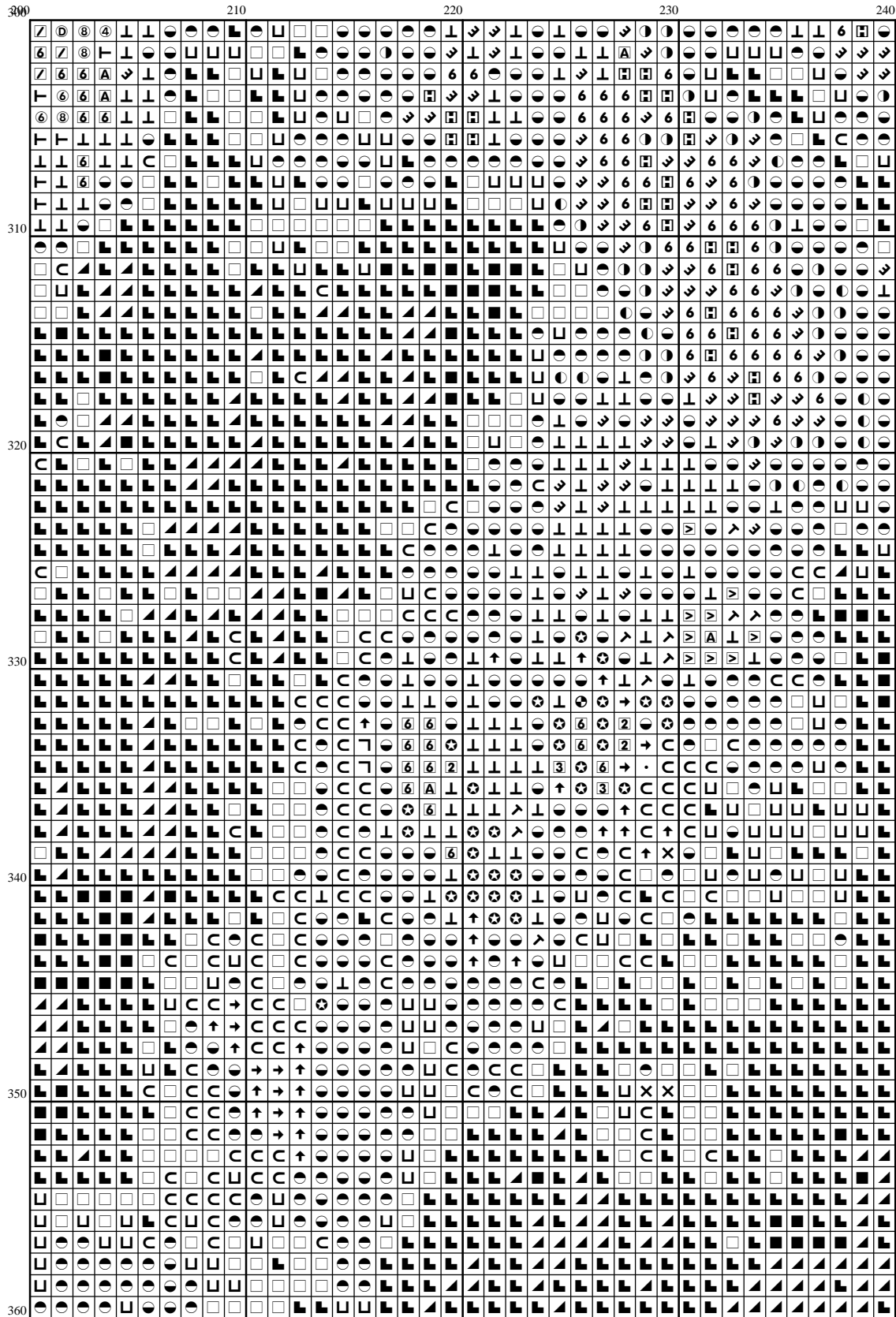
[illegible]

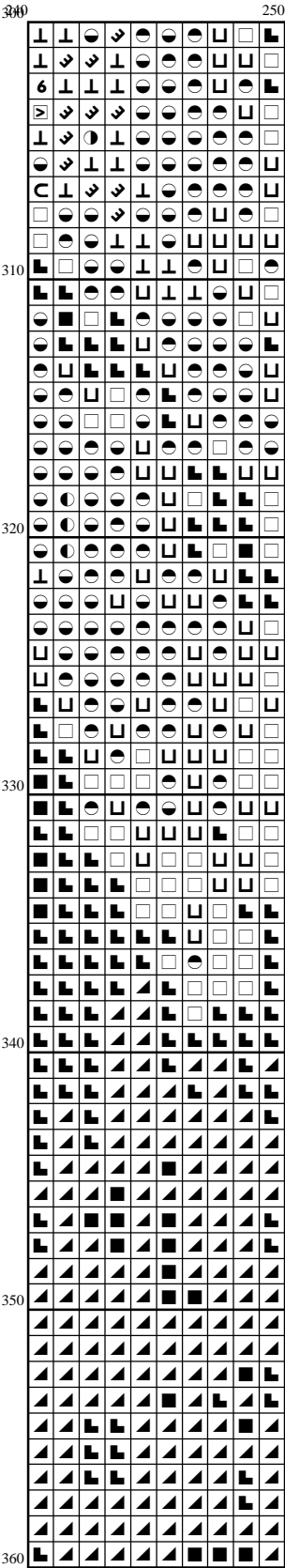


[illegible]









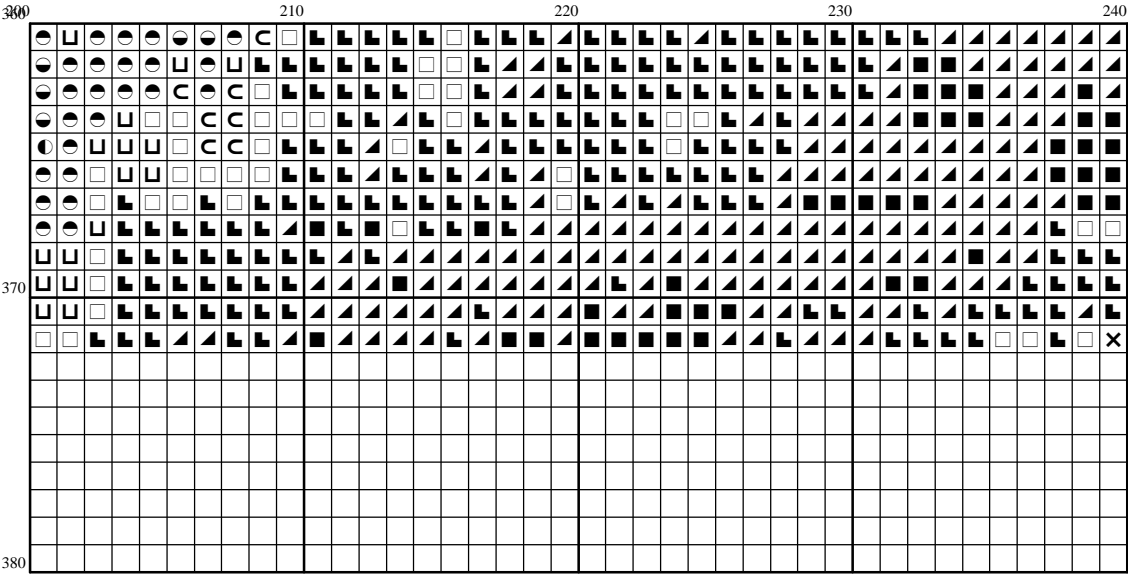
[illegible]

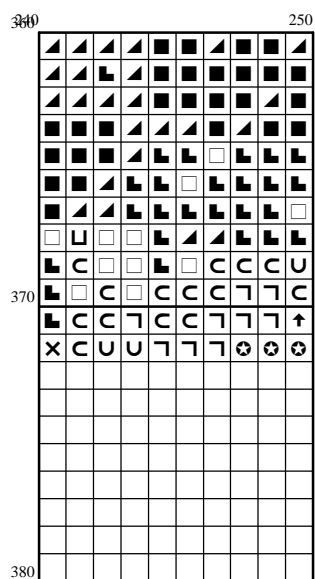
[illegible]

[illegible]

[illegible]

[illegible]





Instructions and Symbol Key for Design "an 170 Gordon Setter"

Fabric: 14countWhiteAida

Stitches: 250 x 372 **Size:** 17.86 x 26.57 inches
or 45.36 x 67.49 cm

Colours: DMC

Use 2strands of thread for cross stitch

Sym	No.	ColourName	Sym	No.	ColourName
!	310	Black	▲	3371	Black brown
■	3799	Pewter grey - vy dk	■	413	Pewter grey - dk
□	844	Beaver grey - ultra dk	▴	3857	3857
+	898	Coffee brown - vy dk	▽	3031	Mocha brown - vy dk
▲	838	Beige brown - vy dk	×	3021	Brown grey - vy dk
♥	3802	Antique mauve - vvy	#	801	Coffe brown - dk
.	839	Beige brown - dk	■	221	Shell pink - vy dk
×	918	Red copper - dk	×	632	Flesh - vy dk
⌘	315	Antique mauve - vy	○	730	Olive green - vy dk
		dk			
U	936	Avocado green - dk	C	3787	Brown grey - dk
┐	3011	Khaki green - dk	L	869	Hazelnut brown - vy dk
■	830	Golden olive - dk	■	611	Drab brown - dk
▣	3858	3858	■	831	Golden olive - med
■	3862	3862	■	370	Mustard - med
■	3012	Khaki green - med	●	535	Ash grey - vy lt
●	317	Pewter grey	●	646	Beaver grey - dk
●	414	Steel grey - dk	→	3790	Beige grey - ultra dk
↑	3860	3860	⊗	840	Beige brown - med
⊗	640	Beige grey - vy dk	T	3052	Green gray - med
└	3022	Brown grey - med	↘	169	Pewter Grey
↘	451	Shell grey - dk	6	318	Steel grey - lt
7	932	Antique blue - lt	8	3777	Terra cotta - vy dk
9	919	Red copper	/	355	Terra cotta - dk
\	920	Copped - med	=	3722	Shell pink - med
>	780	Topaz - ultra vy dk	D	832	Golden olive
E	420	Hazelnut brown - dk	F	167	Khaki Brown
V	782	Topaz - dk	W	356	Terra cotta - med
0	680	Old gold - dk	1	3772	Flesh - dk
2	3861	3861	3	3863	3863
5	371	Mustard	6	642	Beige grey - dk
9	3045	Yellow beige - dk	7	612	Drab brown - med
>	647	Beaver grey - med	↑	841	Beige brown - lt
A	3023	Brown grey - lt	D	223	Shell pink - lt
E	3828	Hazelnut brown	F	3859	3859
L	3064	Sportsman flesh - dk		436	Tan
S	407	Sportsman flesh - v	T	3852	3852
		dk			
U	783	Topaz - med	X	316	Antique mauve - med
0	833	Golden olive - lt	4	523	Fern green - lt
6	3032	Mocha brown - med	8	372	Mustard - lt
<	734	Olive green - lt	↓	422	Hazelnut brown - lt
D	3782	Mocha brown - lt	F	613	Drab brown - lt
H	3864	3864	N	3046	Yellow beige - med
V	644	Beige grey - med	Y	3820	Straw - dk

0	729	Old gold - med	5	3827	Golden brown - vy lt
8	437	Tan - lt	9	834	Golden olive - vy lt
A	738	Tan - vy lt	E	3821	Straw
F	3856	3856	H	927	Grey green - lt
M	3752	Antique blue - vy lt	P	415	Pearl grey
T	168	Silver Grey	Y	162	Light Baby Blue
0	3753	Antique bl. - ultra lt	1	224	Shell pink - vy lt
2	842	Beige brown - vy lt	4	950	Sportsman flesh
6	453	Shell grey - vy dk	7	945	Flesh - med
8	762	Pearl grey - vy lt			

Use **1** strands of thread for backstitch

This chart has been designed and printed with our best intentions of being without mistakes. However, the possibility of human error, printing mistakes or the variation of individual stitching does exist, and we regret that we cannot be responsible for this.

Produced using Cross Stitch Professional for Windows www.dpsoftware.co.uk
 Copyright © Classic Cross Stitch 2003 All rights reserved.