

Poppy Vest Materials

The materials for the Poppy Vest described here are those related to the needlepointed front panels. You will need additional materials for finishing, such as fabric for the back and lining.

Yarn

The Poppy Vest design makes use of 20 different color yarns, with an additional 13 colors created by mixing these yarns. The following are estimates for the amount of each yarn you will need for both the plain and blended colors. We've provided estimates for Paternayan Persian yarn in terms of the number of 3-ply yards required. You will be using this yarn two plies at a time for the number 12 canvas, but it comes in 3-ply form.

Canvas

Color Name	Paternayan Number	Yards of 3-ply Required
Pale Rusty Rose	934	8
Light Strawberry	954	15
Medium Strawberry	952	35
Medium Salmon	841	36
Dark Strawberry	950	37
Dark Cranberry	940	18
Black	220	227
Bright White	261	24
Off White	263	15
Pale Beige Brown	465	7
Light Pearl Grey	213	5
Medium Pearl Grey	212	5
Pale Mustard	715	2
Autumn Yellow	727	5
Light Honey Gold	734	16
Golden Brown	441	10
Pale Khaki Green	645	9
Light Khaki Green	644	14
Medium Khaki Green	643	26
Dark Khaki Green	641	22

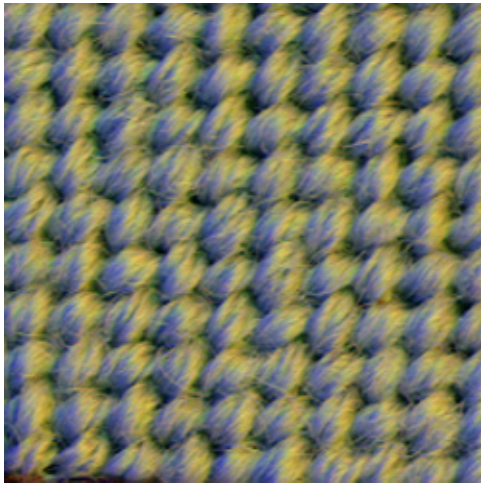
You will need two pieces of 12-count interlock canvas, each 18" by 30", cut so the selvege runs the long way. Choose a high grade canvas such as orange-line to ensure even sizing. It would be best to cut the two vest panels from the same 36" square piece of canvas to improve the chance of the two panels matching. We've observed large variations in the actual count of various batches of canvas.

Stitching the Poppy Vest

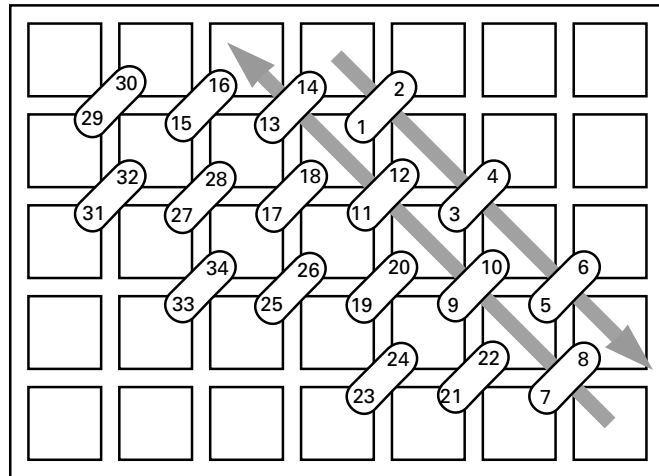
The vest is stitched almost entirely in the tent stitch with the design coming from the change of colors. There is one decorative stitch used to provide a textural element at the center of the poppy, the spider stitch.

The Tent Stitch

The Tent Stitch is a generic name for the standard area fill stitch – probably the most used stitch in needlepoint. The version shown in the diagram on this page is the Basket Stitch version, so named because the back side looks woven. The Continental Stitch is indistinguishable from this on the front, but is stitched right to left in horizontal rows turning the canvas upside down for every other row.



The Tent Stitch in Use



Stitch Chart for the Tent Stitch

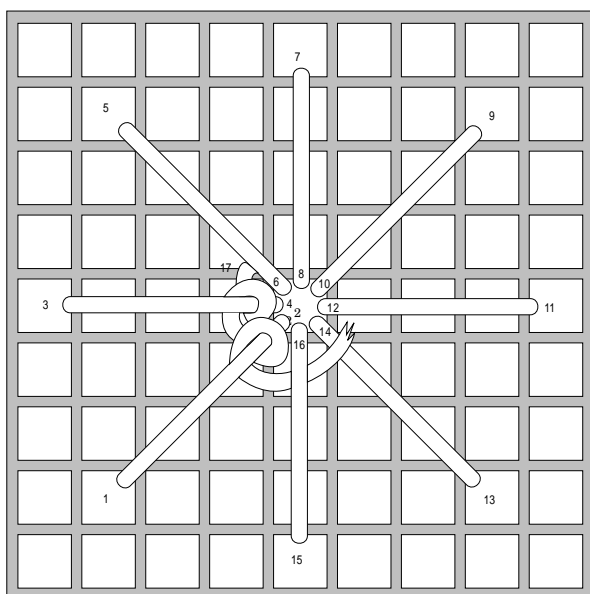
The Spider Stitch

The centers of the poppies are over-stitched with the spider stitch. Since this doesn't show up on the stitch chart except for the medium khaki green tent stitch that will lie under the stitch, use the photos to guide you. Notice that unlike the diagram below, those placed in the design are done unevenly so as to appear more organic, and in perspective.

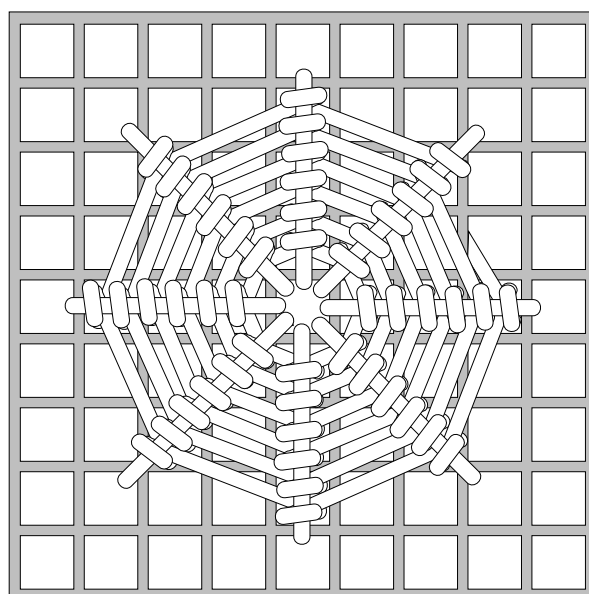


The Spider Stitch in Use on the Poppy on the bottom of the right panel

The Spider Stitch (Continued)



After the spokes are stitched through the canvas, you begin working on top weaving the thread under two spokes and back over one.



Go around and around until the spokes are full. Usually when you think you are finished, you can go around two more times.

Poppy Vest Color Chart

1			Pale Rusty Rose #934	18			Pale Beige Brown #465
2			Light Strawberry #954	19			Light Pearl Grey #213
3			Medium Strawberry #952	20			Medium Pearl Grey #212
4			Medium Salmon #841	21			Pale Mustard #715
5			Dark Strawberry #950	22			Autumn Yellow #727
6			Dark Cranberry #940	23			Light Honey Gold #734
7			Black #220	24			Golden Brown #441
8			Blend 1 & 2 #934 + #954	25			Pale Khaki Green #645
9			Blend 2 & 3 #954 + #952	26			Light Khaki Green #644
10			Blend 3 & 4 #952 + #841	27			Medium Khaki Green #643
11			Blend 5 & 6 #950 + #940	28			Dark Khaki Green #641
12			Blend 5 & 7 #950 + #220	29			Blend 28 & 24 #641 + #441
13			Blend 6 & 7 #940 + #220	30			Blend 26 & 27 #644 + #643
14			Blend 3 & 5 #952 + #950	31			Blend 27 + 28 #643 + #641
15			Blend 4 & 5 #841 + #950	32			Blend 27 & 24 #643 + #441
16			Bright White #261	33			Blend 7 & 28 #220 + #641
17			Off White #263				